

Regal S590 Pro

958344 LP / 958347 NG

POWER FEATURES

- 55,000 BTU stainless steel Dual-Tube™ burner system
- 10,000 BTU commercial grade side burner
- 15,000 BTU stainless steel rear rotisserie burner
- Premium rotisserie kit included

COOKING SYSTEM

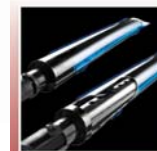
- 875 sq. in. total cooking surface including porcelain coated warming rack
- 625 sq. in. primary cooking surface
- Solid 9mm stainless steel cooking grids
- Stainless steel Flav-R-Wave™ cooking system
- Five stainless steel Dual-Tube™ burners
- Linear-Flow™ valves with 180° Sensi-Touch™ control
- Sure-Lite™ electronic ignition system
- Deluxe Accu-Temp™ thermometer

DESIGN AND STYLING

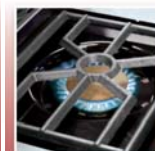
- Stainless steel hood panel with rugged cast aluminium end caps
- Stainless steel cookbox with cast aluminium end caps
- Stainless steel shelves with stylish cast aluminum condiment bins
- Enclosed cabinet with stainless steel cabinet doors
- Stainless steel control panel
- Pull out tank drawer
- Built-in control panel lights for year round grilling
- Heavy-duty locking swivel casters with level setting

WARRANTY

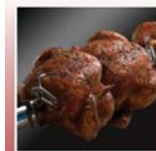
- Limited lifetime warranty on cookbox
- 10 years on stainless steel Dual-Tube™ burner system
- 5 years on stainless steel Flav-R-Wave™ cooking system
- 2 years on remaining parts and paint



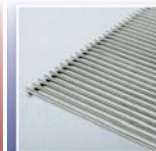
Stainless Steel Dual-Tube™ Burner System



Commercial Grade Side Burner



Premium Rotisserie Kit



Solid Stainless Steel Cooking Grids



Built In Control Panel Lights