



Solaire[®]

INFRARED GRILLING SYSTEMS

SOLAIRE ANYWHERE GRILL TRIPOD ASSEMBLY INSTRUCTIONS

12028 E. PHILADELPHIA ST. WHITTIER CALIFORNIA 90601 U.S.A. www.rasmussen.biz



REV: 7.9.2009

ATTENTION! READ INSTRUCTIONS CAREFULLY BEFORE ASSEMBLY

WARRANTY

Rasmussen will repair or replace at our election any part that has failed due to defects in material or workmanship for a period of one year from date of purchase.

REQUIRED PARTS AND TOOLS

The Solaire Anywhere Tripod Assembly consists of: one Tripod Mounting Bracket (Figure 1), one Tripod Mounting Plate (Figure 2), with four bolts, four hex nuts and four lock washers (Figure 3) and one Tripod Base, (Figure 4, bottom of page). A 7/16" or adjustable wrench and flathead screwdriver required for assembly.

FIGURE 1
Tripod Mounting Bracket



FIGURE 2
Tripod Mounting Plate

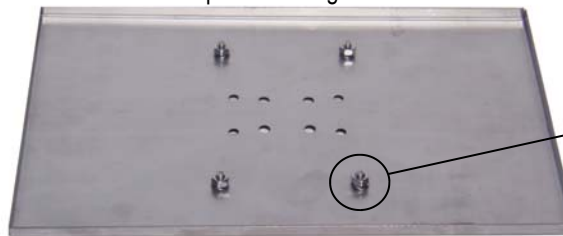


FIGURE 3



STEP ONE: EXTENDING THE TRIPOD LEGS

- 1) Remove the shrink wrap from the Tripod Base. Ensure that Knob "A" (Figure 4) is loose and stand the Tripod Base upright as shown.
- 2) Grasp two of the tripod legs, so that the weight of the tripod is on the third leg (Figure 5A).
- 3) Carefully pull the legs apart (Figure 5B) to a fully open position (Figure 6). In order to secure the tripod legs position, gently tighten Knob "A" (Figure 6).

WARNING:

Minimal torque is needed on all 3 tripod knobs. Over tightening could damage the knob assembly and will void the warranty.

FIGURE 4



FIGURE 5

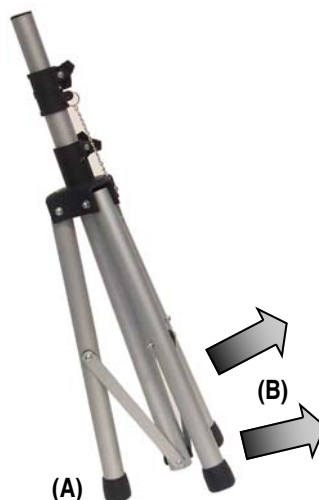
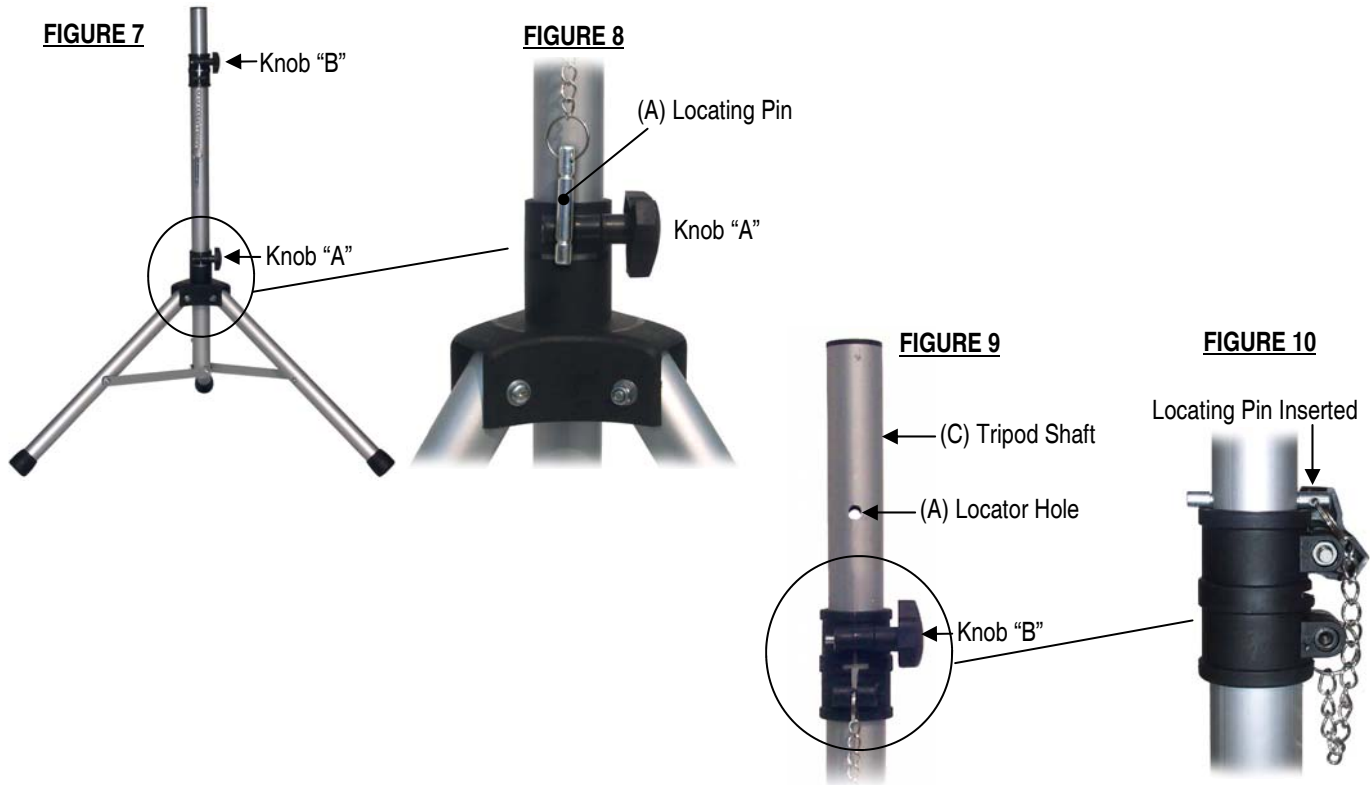


FIGURE 6



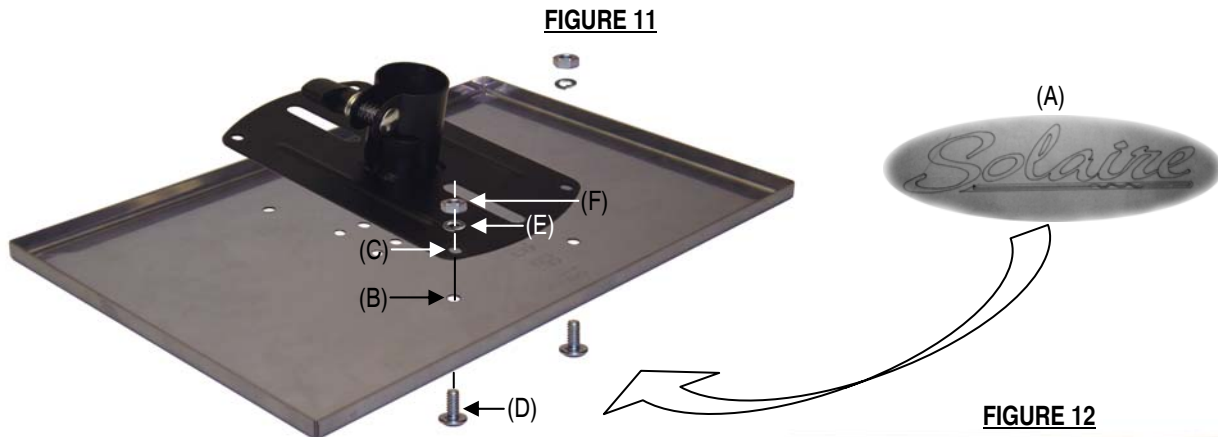
STEP TWO: SETTING THE TRIPOD HEIGHT

- 1) Ensure that Knob "B" is loose (Figure 7).
- 2) Set height by inserting the Locating Pin (Figure 8A) through one of the five locator holes (Figure 9A) in the Tripod Shaft (Figure 9C).
- 3) Gently thumb tighten Knob "B" (Figure 7) in order to prevent unwanted rotation. Figure 10 shows Locating Pin correctly inserted.



STEP THREE: ATTACH THE TRIPOD MOUNTING BRACKET TO THE TRIPOD MOUNTING PLATE

- 1) Remove the shrink wrap from the Mounting Plate. (B)
- 2) Place the Mounting Plate on a flat surface, Solaire logo side down (Figure 11A).
- 3) Using a 7/16" (or adjustable) wrench, unscrew the Hex Nuts (Figure 11F) from the four Bolts (Figure 11D).



- 4) Align the four Mounting Bracket screw holes (Figure 11C) with the four screw holes on the Mounting Plate (Figure 11B).
- 5) Re-screw the four bolts (Figure 11D) through the Mounting Bracket, Mounting Plate, Lock Washer and Hex Nuts (Figures 11E and F), again using a 7/16" (or adjustable) wrench and a flat head screwdriver (Figure 12).

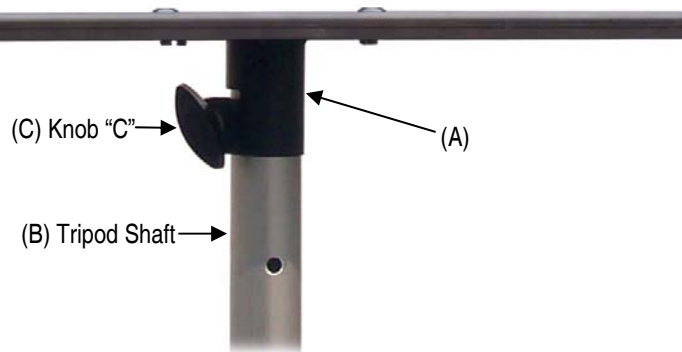


STEP FOUR: ATTACH THE MOUNTING BRACKET / MOUNTING PLATE ASSEMBLY TO THE TRIPOD

- 1) Take the Mounting Bracket/Mounting Plate assembly (Figure 13A) and insert into the Tripod Shaft (Figure 13B)
- 2) Gently thumb-tighten Knob "C" (Figure 13C) to prevent unwanted rotation of the grill. Do not over tighten as this may strip the threads voiding your warranty.

FIGURE 13

(Side View)



STEP FIVE: ATTACH THE SOLAIRE ANYWHERE GRILL TO THE TRIPOD

- 1) Remove the four Adjustable Feet on the bottom of the Solaire Anywhere Grill (pre-attached at the factory) (Figure 14A).
- 2) With the back of the Solaire Anywhere Grill facing the Tripod and using the brackets underneath the Solaire Anywhere Grill as a guide (Figure 14B), slide the grill onto the Mounting Plate (Figure 14C) until the Mounting Plate is fully inserted into the slides (Figure 15).
- 3) Secure the Solaire Anywhere Grill by screwing the four Adjustable Feet back into place (Figure 16A).

FIGURE 14

(Rear Side View)

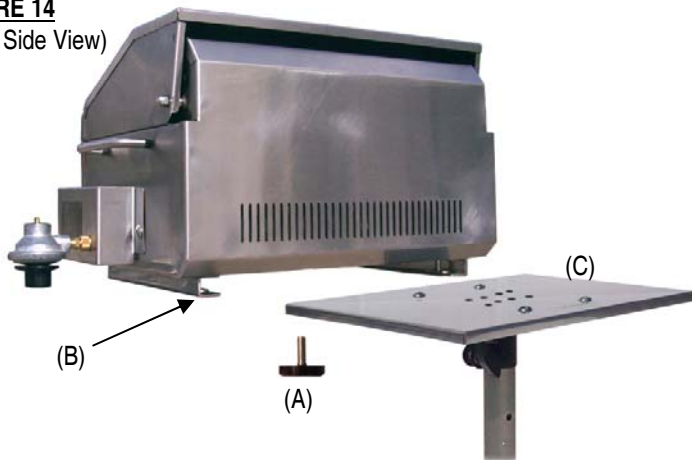


FIGURE 15

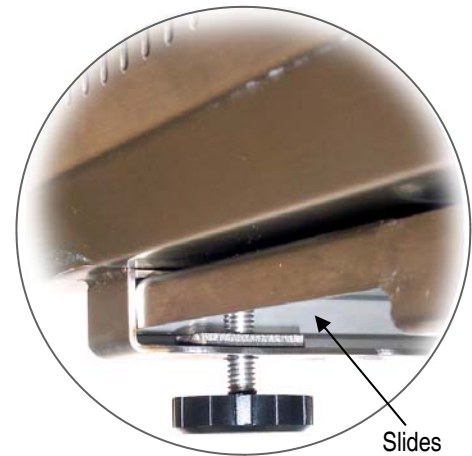


FIGURE 16

(Front View)



Solaire®

INFRARED GRILLING SYSTEMS

27" SOLAIRE GRILLS



Our 27" grills offer outstanding features at very attractive prices. And they grill great, too!

The 27GIR is perfect for 2 to 4 people.

The 27GIRXL is perfect for 2 to 6 people, and for those who wish to perform rotisserie cooking (AGBQ model).

30" SOLAIRE GRILL



With the speed of infrared our 30" grill will prepare meals that would normally require a much larger unit.

(B)

56" MODELS



Prepare a complete meal right at your grill. With three main burners, rear infrared rotisserie burner and two side burners, even cooking for large groups is no problem.

Rasmussen

GAS LOGS & GRILLS

12028 E. PHILADELPHIA ST. WHITTIER CALIFORNIA 90601 U.S.A.
info@rasmussen.biz www.rasmussen.biz