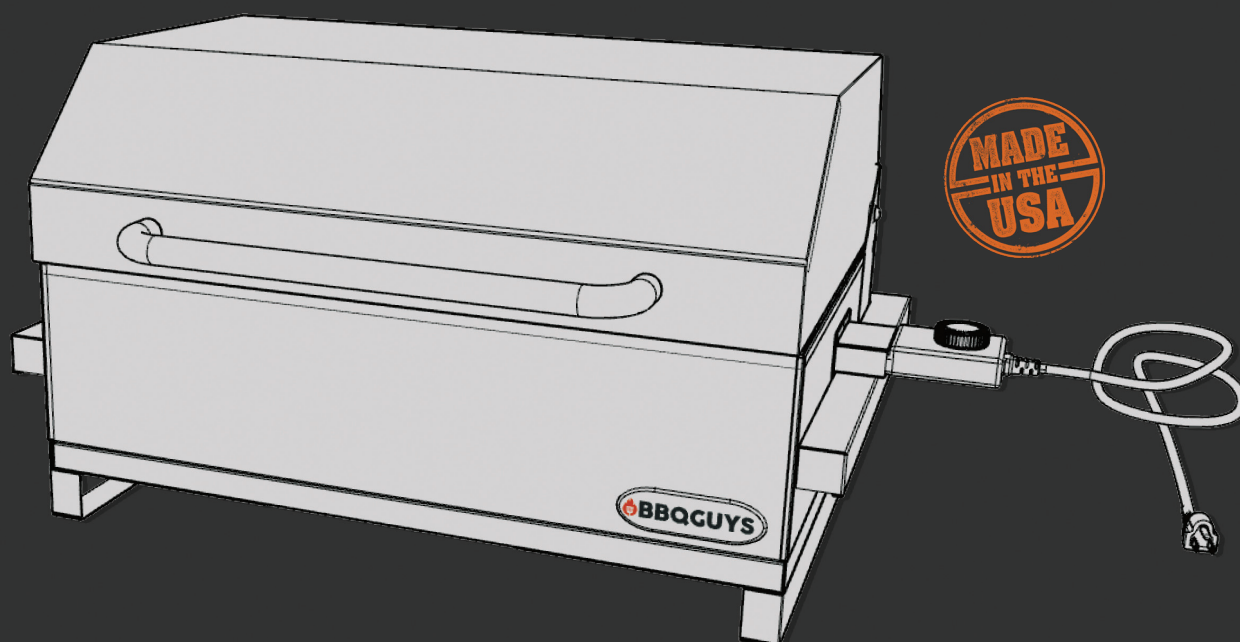




ELECTRIC GRILL

Owner's Manual

ELSTBBQ



⚠ ATTENTION

INSTALLER: Please leave these instructions with the consumer. CONSUMER: Please read and retain these instructions for future reference and before installing or operating.

⚠ WARNING

Observe all local codes and ordinances when installing this appliance. If no local codes are applicable, wire unit in accordance with the latest National Electrical Code, ANSI/NFPA 70, or the Canadian Electrical Code, CSA C22.1, whichever is applicable.

⚠ CALIFORNIA PROPOSITION 65 WARNING

WARNING: This product can expose you to chemicals including Chromium (hexavalent compounds), which are known to the State of California to cause cancer and birth defects or other reproductive harm. For more information, go to: www.P65Warnings.ca.gov

 **WARNING**

If the information in this manual is not followed exactly, a fire or explosion may result, causing property damage, personal injury, or loss of life.

 **WARNING**

Read the installation, operation, and maintenance instructions thoroughly before installing, operating, or servicing this equipment to reduce risk of fire, burn hazard, or other injury.

This manual should be retained for your information.

Do not operate this electric grill without having read this manual. All electrical installations, service, and repairs must be performed by a qualified technician or authorized service agent.

Note: *This grill is not intended for commercial use.*

 **WARNING**

Risk of fire! The power cord must not be pinched against a sharp edge. Secure cord to avoid tripping or snagging. To reduce the risk of fire, electric shock, or personal injury, do not run cord under carpeting. Do not cover cord with throw rugs, runners, or the like. Arrange cord away from traffic areas and where it will not be tripped over.

Risk of fire! To prevent a possible fire, do not block air intake or exhaust in any manner. Do not use on soft surfaces where opening may become blocked.

Risk of fire! Do not blow or place insulation against the appliance.

This electric appliance is tested and listed for use only with the approved optional accessories. Use of optional accessories not specifically tested for this electrical appliance could void the warranty and/or result in a safety hazard.

If the information in these instructions is not followed exactly, a fire or explosion may result causing property damage, personal injury, or death. Do not store or use gasoline or other flammable vapors in the vicinity of this or any other appliance.

This appliance is heavy. It is highly recommended that two people install this appliance.

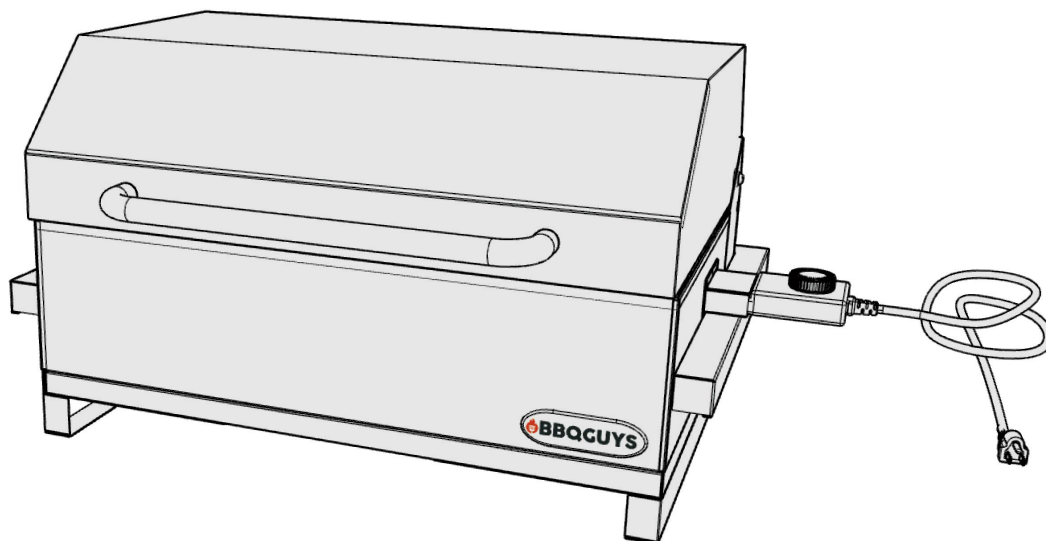
Do not run the power cord horizontally, directly below the appliance.

TABLE OF CONTENTS

Product Specifications	4-5
Warnings	6
Parts List	7
Locating the Appliance	8
Installation and Assembly	9-11
Operation	12
Drip Tray	12
Care and Cleaning	13
Troubleshooting	14
Warranty Information	15

This manual applies to the following BBQGuys Grills

Model: ELSTBBQ



Cutout Dimensions

19" W x 13.5" D x 4.25" H*

*These dimensions create the required air gap underneath this appliance. This air gap serves multiple purposes, such as preventing a build up of heat in the island cavity and helping provide proper airflow to keep the unit cool.

Cooking Grid Dimensions

16.5" W x 12" D

Primary Ignition

Electric Element

Warranty

*Limited Lifetime - Defects in manufacturing and workmanship. Cooking grids, stainless housing, and against rust-through.

*1 Year - Heating Element and Heating Element Components

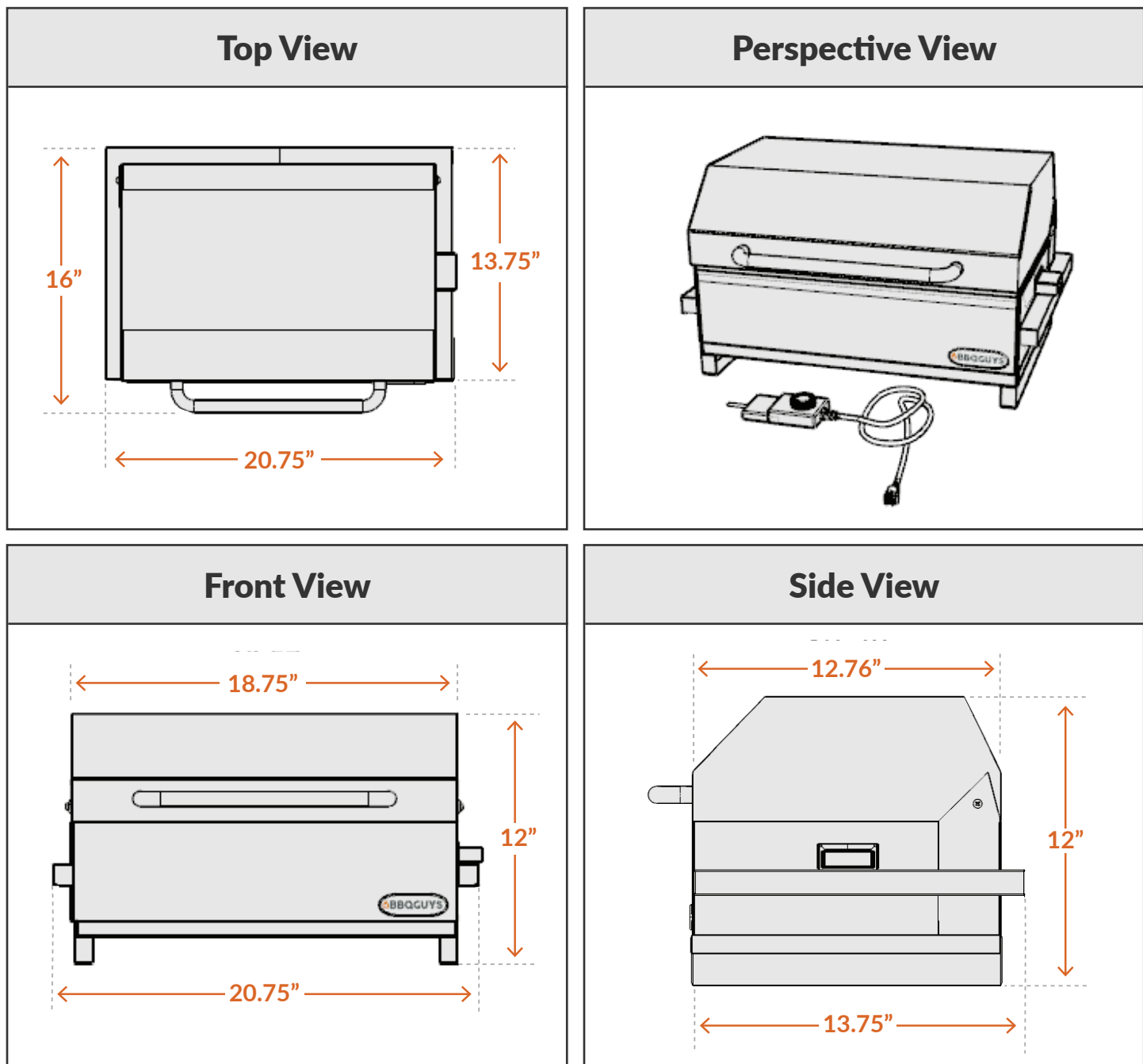
*See warranty section on Page 14 for more details.

GRILL SPECIFICATIONS

ALWAYS have equipment measured by a contractor before beginning any project.

*These dimensions create the required air gap underneath this appliance. This air gap serves multiple purposes, such as preventing a build-up of heat in the island cavity and helping provide proper airflow for combustion and/or cabinetry.

Product Dimensions:

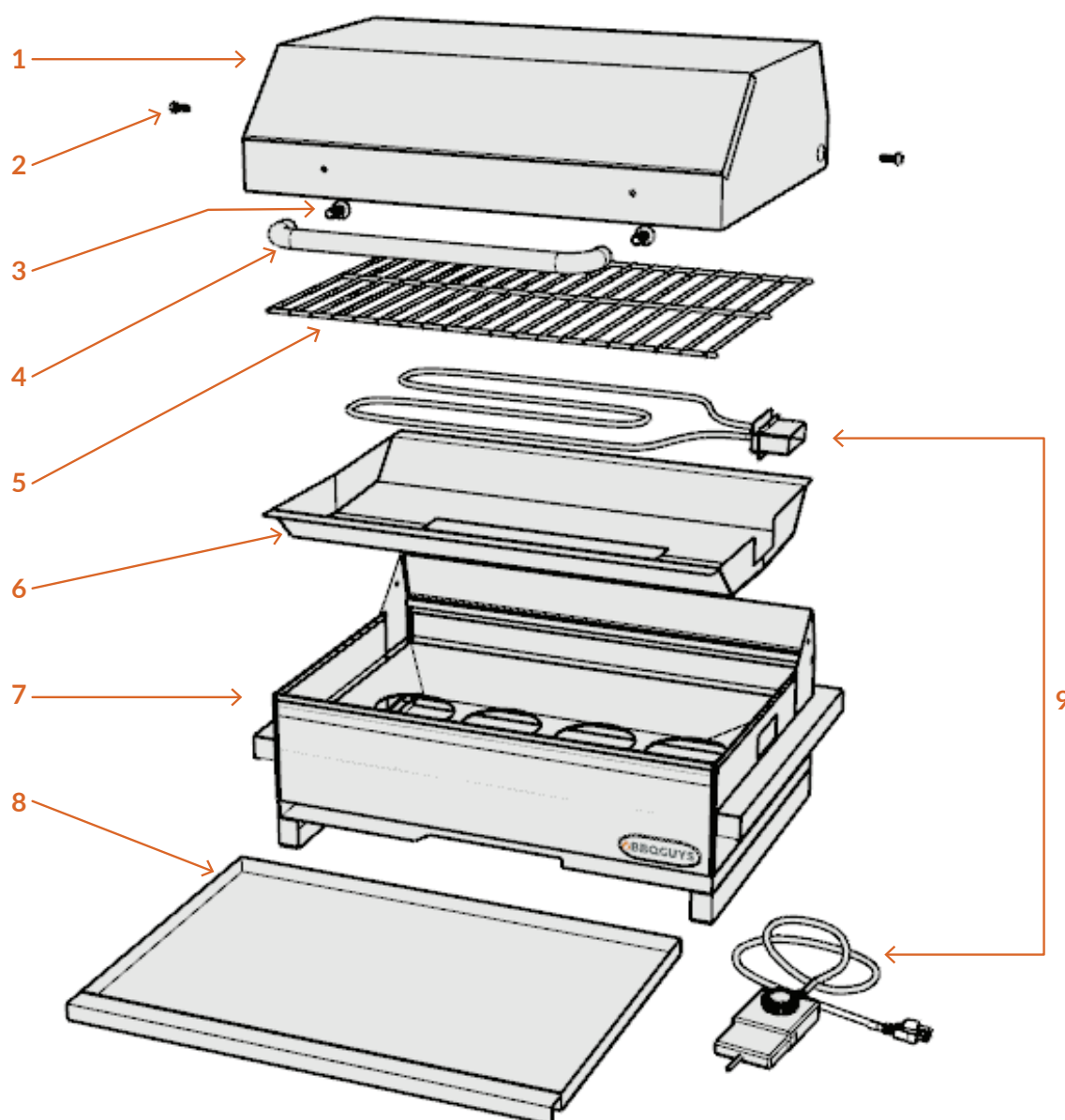


WARNING

- **THIS APPLIANCE IS HOT WHEN OPERATING AND CAN CAUSE SEVERE BURNS.**
- Do not install damaged, incomplete, or substitute components.
- Young children should be carefully supervised when they are in the same room as the appliance. Toddlers, young children, and others may be susceptible to accidental burns. A physical barrier should be used if there are any at-risk individuals in the home. To restrict access to the appliance, an adjustable safety gate is recommended to keep toddlers, young children, and other at-risk individuals out of the area and away from hot surfaces.
- This appliance is not intended for use by persons (including children) with reduced physical, sensory, mental capabilities, or lack of experience and knowledge, unless they have been given supervision or instruction.
- For residential use only! NOT for commercial use! Any commercial or public use of this grill voids all warranties and could cause injury.
- Do not touch hot surfaces. Always use the lid handle.
- To protect against electrical shock, do not immerse the cord, plugs, probe, or grill in water or other liquids.
- Close supervision is necessary when any appliance is used near children.
- Unplug from outlet when not in use and before cleaning or servicing. Allow to cool before putting on or taking off parts.
- Do not operate appliance with a damaged cord or plug, or after the appliance malfunctions or has been damaged in any manner. Return appliance to the nearest authorized service facility for examination, repair, or adjustment.
- The use of accessory attachments not recommended by the appliance manufacturer may cause injuries.
- Do not let cord hang over edge of a table or counter, or touch hot surfaces.
- Do not place on or near a hot gas burner, electric burner, or in a heated oven.
- Extreme caution must be used when moving an appliance containing hot oil or other hot liquids.
- Do not use appliance for anything other than intended use.
- Fuel, such as charcoal briquettes, is not to be used with appliance.
- Use only on a properly grounded outlet.
- NEVER grill in the open rain or in standing water because this grill is an electric appliance. There is always a hazard of electric shock while operating this unit.
- Keep the appliance area clear and free from combustible materials, gasoline, and other flammable vapors. **WHEN OPERATING THE UNIT IN ALL INSTALLATION APPLICATIONS, KEEP ALL OBJECTS, ESPECIALLY COMBUSTIBLE MATERIALS, AWAY FROM THE OPERATING UNIT AT LEAST A MINIMUM OF 4" ABOVE (WITH LID OPEN) AND 4" INCHES ON ALL SIDES.**

Save These Instructions

PARTS LIST



Ref #	Part #	Description
1	ELSTBBQ-P-1	Grill hood
2	ELSTBBQ-P-2	Grill hood hinge hardware - screw (x2)
3	ELSTBBQ-P-3	Grill handle hardware - screw (x2)
4	ELSTBBQ-P-4	Grill handle
5	ELSTBBQ-P-5	Cooking grate
6	ELSTBBQ-P-6	Reflector pan
7	ELSTBBQ-P-7	Body
8	ELSTBBQ-P-8	Drip tray
9	ELSTBBQ-P-9	Heating element

LOCATION OF APPLIANCE

This unit is not to be used in altitudes above 6,561.68 feet (2,000 meters).

Most importantly, this is an outdoor appliance. Under no circumstance is this appliance to be used indoors. This includes garages or any other enclosed area. This outdoor electric cooking appliance is not approved to be installed in or on any recreational vehicles and/or boats. BBQGuys Grills are for single family/residential use only. Ensure your appliance is positioned safely away from anything that can catch fire.

- When determining a suitable location, take into account concerns such as exposure to wind and proximity to traffic paths.
- Do not store combustible materials near the appliance, gasoline, flammable liquids, or vapors.
- This BBQGuys Grill must be located outdoors only. Please note: Since hot air rises above the BBQGuys Grill while in operation, covered locations should be avoided unless an outdoor vent hood appliance is properly installed. Do not locate the BBQGuys Grill where an overhang or awning may cover it unless an outdoor vent hood appliance is properly installed.
- DO NOT obstruct the air flow of this appliance in order to prevent overheating.
- Keep any electrical supply cords away from any heated surfaces and/or sharp and aggressive edges.
- **Non-Combustible Enclosure:** The BBQGuys Grill must be installed in a NON-COMBUSTIBLE ENCLOSURE ONLY. The determination of whether a location is combustible or non-combustible construction is made by the local fire marshal, building inspector, or the local safety authority having jurisdiction.
- **Combustible Enclosure Clearance:** Ensure your appliance remains at a distance of at least 14" from sides and 16" from back from any combustible material such as wood, gyprock, paper and plants. Do not store combustible materials, gasoline, or flammable liquids or vapors around the appliance. The outdoor kitchen structure itself should be constructed completely out of non-combustible materials.
- **Adequate Ventilation:** Ensure there is adequate ventilation for both the appliance, grill cart, any additional cooking appliances, and/or island cavity. While the amount of venting required varies on a case-by-case basis, consult with your local licensed professional and local code for adequate venting requirements. Keep the ventilation openings of the enclosure free and clear from any debris.
- **Firm Level Surface:** Use your appliance only on a firm, level surface. This appliance is not designed for recreational vehicles, and should not be installed on a boat or marine craft.
- **Protection from Weather:** Keep the appliance protected from adverse weather, including rain and wind.
- **Partial Enclosures:** Many backyards have areas that are partially closed off, such as balconies and pergolas. In some cases, it is hard to decide whether these partially enclosed areas should be classified as indoor areas, particularly in terms of permanent (non-closable) ventilation. Consult the AHJ (Authority Having Jurisdiction) or a local contractor of any uncertainty.
- When installing a BBQGuys appliance under an overhead construction:
 - A minimum of 6 feet of clearance is required between the countertop and the overhead construction.
 - When installed under a combustible overhead construction, the area above the BBQGuys appliance must be covered with a vent hood. The vent hood must provide protection for the combustible overhead construction.
 - BBQGuys appliances must not be installed under unprotected combustible overhead construction.
 - When installed under overhead non-combustible construction, a vent hood is still recommended. The covered area should be properly ventilated.
 - When using a vent hood, the area above the cooking surface of the grill must be covered with a vent hood larger than the cooking area of the grill, and with a minimum of 1200 CFM for proper outdoor application.

INSTALLATION AND ASSEMBLY

Ensuring Proper Airflow

Proper airflow **MUST** be maintained for the grill to perform as it was designed. If airflow is blocked, overheating will result. Do not block more than 75% of the cooking grid surface with pans or griddles.

WARNING: *NEVER cover the entire cooking or grill surface with griddles or pans. Overheating of the electronic components will occur.*

CAUTION: *DO NOT operate this grill with air blowing into or across the rear oven lid vent. This can cause poor performance and/or dangerous overheating. Orient the grill so that any prevailing wind blows against the front of the grill.*

Extension Cords

Use only a 14-gauge extension cord with a 3-prong plug suitable for use with outdoor appliances. Outdoor extension cords should be used with outdoor products and are surface marked with suffix letter "W" and with a tag stating "Suitable for use with outdoor appliances". The maximum length allowed for the extension cord is 25 feet. Do not use damaged extension cords. Examine extension cord before use and replace if damaged. Keep cord away from heat and sharp edges.

Important: *Connection to an extension cord must be kept dry and off the ground.*

Connecting to Electrical Outlet

This electrical appliance is equipped with a 3-pronged (grounding) plug for your protection against shock hazard and should be plugged directly into a properly grounded, 3-prong GFI protected receptacle. The appliance should be supplied through a residual current device (RCD) having a rated residual operating current not exceeding 30 mA. Do not cut or remove the grounding prong from the plug. Do not operate any appliance with a damaged cord or plug, or after an appliance malfunction. Return the appliance to your dealer or authorized service facility for inspection, repair, or electrical/mechanical adjustment.

Installing the Heating Element

Install the heating element by inserting box shield through rectangular opening from inside the grill body and letting the heating element rest on reflector pan. Use the included screw and washer to secure the heating element to the grill body. Then, plug the element control into the heating element.

INSTALLATION AND ASSEMBLY

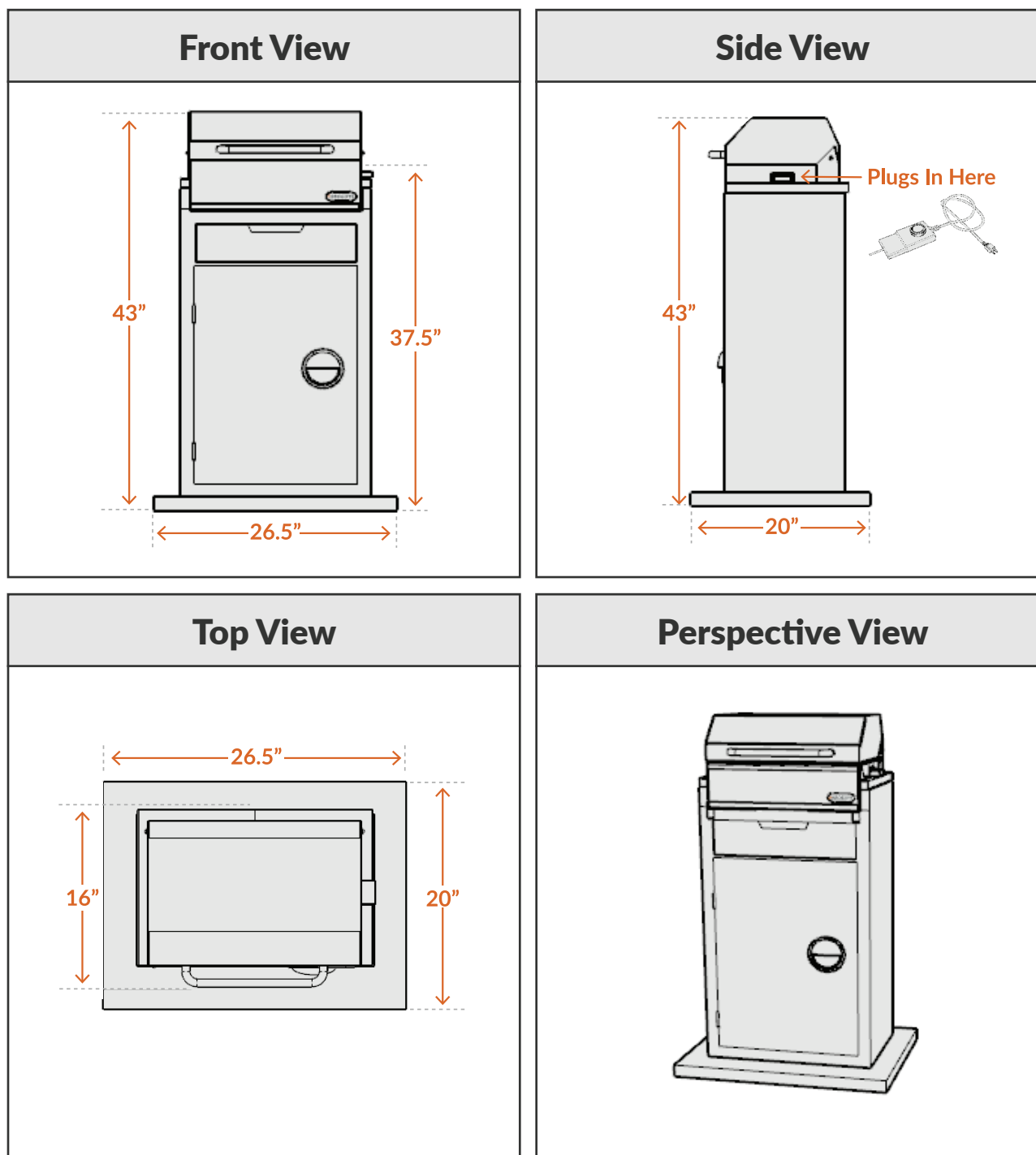
Pedestal Models

Reference the figure to the right when installing your pedestal electric grill.

1. Ensure the grill pedestal is securely fastened or placed on a stable, level surface to ensure the grill remains upright at all times.
2. Align the electric grill onto the top of the pedestal assembly.
3. Ensure the feet of the grill are securely in place with the pedestal ridge.



Pedestal Dimensions:



INSTALLATION AND ASSEMBLY

Countertop Models

Be sure the unit is stationed on a clean, dry, and level surface, and that all clearance and location requirements on the previous page are met. Reference the figure below when installing your countertop electric grill.

1. Place the grill on a level, non-combustible surface.
2. Ensure the unit is level and free from wobble.
3. Route power cord to outlet, ensuring there is no contact with heat source, or any pinch points.

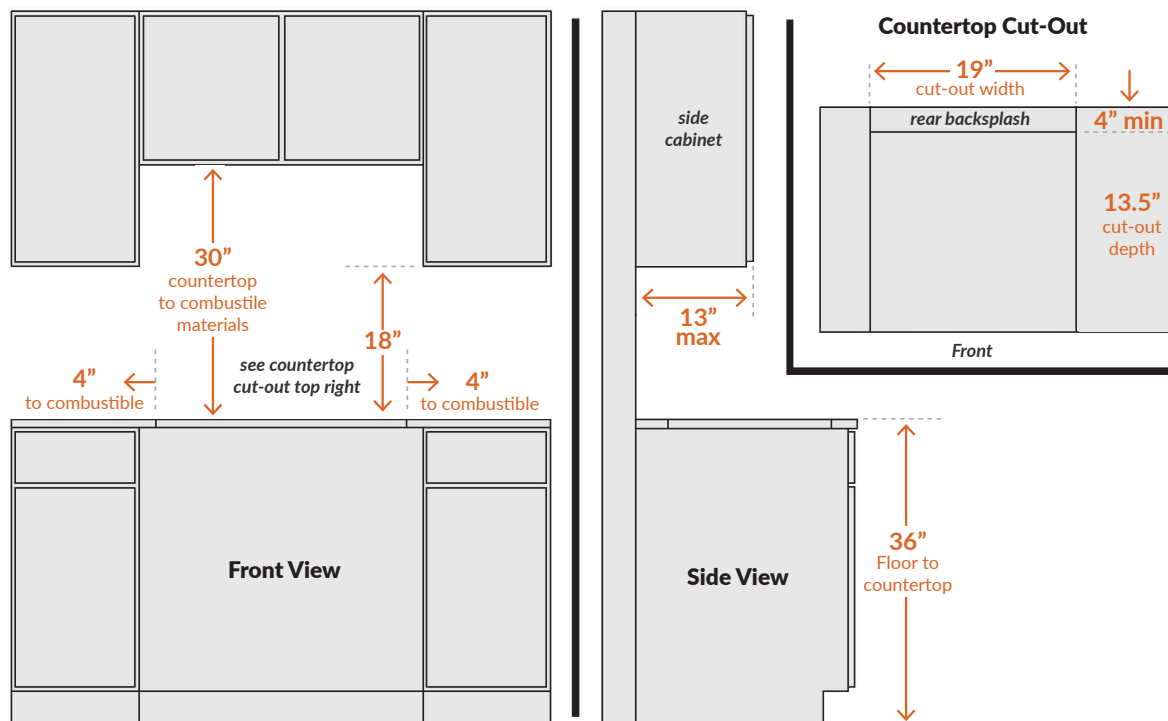
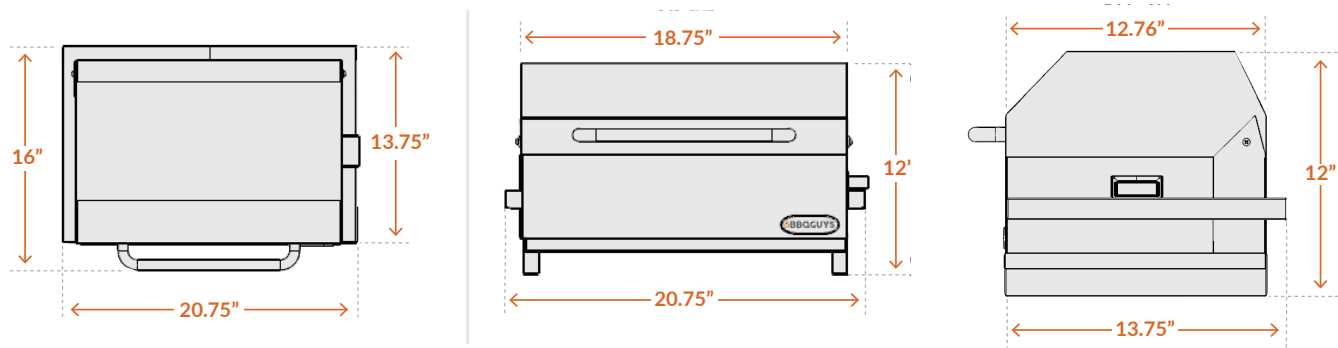
Important: BEFORE USE, the grill must on stable, level surface to ensure the grill remains fixed and upright at all times.

Built-In Models

Reference the figures below and to the right when installing your built-in electric grill.

1. Carefully lift the unit and slide into the islands pre-cut hole. Built-in specifications and regulations can be found on pages 9, 10, and 11.
2. Route power cord to outlet ensuring no contact with heat source or any pinch points.

Important: BEFORE USE, the grill base must be securely fastened to a stable, level surface to ensure the grill remains fixed and upright at all times.



OPERATION

Cooking Element

Turning on your Electric Grill:

1. Plug power cord into GFCI outlet.
2. Ensure power cord surge protector is reset.
3. Turn the control knob to on and set the cooking temperature from a “steak searing” HIGH all the way down to a “keep warm” LOW.
4. For maximum performance, allow the grill to preheat for 10 minutes before cooking.

Drip Tray

Drippings from grilling flow through specially designed channels and collect in the drip tray. After each use, wait for the grill to completely cool before carefully pulling out the drip tray to empty it.



CARE AND CLEANING

NOTE: Always wait until your appliance is completely cool before cleaning. Do not clean this product with a water spray or the like.

You should clean your appliance after each use to maintain the overall appearance over the life of your appliance. After the first use, it is normal for your appliance to become discolored in certain areas from the heat produced by the heating element.

Exterior Cleaning

When cleaning your appliance, always scrub and polish in the direction of the stainless steel grain. Wipe down the exterior of the appliance to remove any splatter or grease. Use a stainless steel cleaner to clean the exterior surface for a polished look. Do not use harsh abrasives. To remove baked-on foods, use a fine-to-medium-grit non-metallic abrasive pad with a stainless steel cleaner to avoid specks of grease collecting in the grain and causing the appearance of rust. Before installing the cover, always allow the surface to dry. DO NOT cover a damp appliance.

Drip Tray

Clean the drip tray after each use. Failure to do so could result in a fire. Once the appliance has cooled completely, remove the tray by pulling it all the way out until it comes free. Clean the tray with hot soapy water and replace, ensuring the tray is completely installed in the grill housing. If using an oven-cleaning agent, be sure to carefully follow the manufacturer's instructions to avoid damage to the stainless steel.

Grilling Racks

To clean (after each use), turn the heating element on HIGH for 10-15 minutes with the hood closed. This allows any food particles or grease drippings to burn away. Brush components with a grill cleaning brush to remove any remaining charred materials.

Protecting Your Appliance from the Weather

An optional, heavy-duty cover will protect your appliance's finish and protect your investment. The water-repellent cover will shield your appliance from the weather. Always cover your appliance when not in use. (Allow to cool before covering.)

TROUBLESHOOTING

Safety Information

WARNING

Disconnect the appliance completely and let cool prior to any service.
Only a qualified service person should service and repair this electric appliance.

Problem	Possible Cause	Solution
1. Grill does not work.	1. Power failure. 2. Power not plugged correctly. 3. GFI plug may be tripped.	1. Check if power is available. 2. Make sure the power cord plug is properly inserted into the receptacle. 3. Reset switches on the GFI receptacle.
2. Cooking element does not work.	1.No power to unit. 2. Bad element.	1. Assure power is available. 2. Contact customer service.

WARRANTY REGISTRATION

The warranty is for original owners only at the original site of delivery and cannot be transferred to new owners. You must retain your sales slip or invoice for warranty to apply.

Installation, repair, and maintenance work should be performed by an authorized service technician. Work by unqualified persons could be dangerous and will void the warranty. All appliances must have a qualified installer complete the installation for the warranty to be in effect. Incorrect installation of the BBQGuys appliance will void the warranty. Please call BBQGuys for more information on correct installation of the appliance.

BBQGuys shall not be liable under this or any implied warranty for incidental or consequential damages, and BBQGuys' liability is limited to the purchase price of the appliance only. This warranty gives you specific legal rights, and you may also have other rights, which may vary from state to state. This warranty is applicable in the United States only. Improper maintenance, high cooking temperatures, excessive humidity, chlorine, fertilizers, lawn pesticides, chemicals, and salt can affect the stainless steel components, and for these reasons, the warranties **DO NOT COVER DISCOLORATION, SURFACE RUST, OR RUST**, unless there is a loss of structural integrity/rust through of the appliance components. This warranty covers defects in material and workmanship.

Warranty on Parts:

- Body – Lifetime (Parts Only)
- Cooking Grids – 1 Year (Parts Only)
- Heating Element – 1 Year (Parts Only)
- Ignition and Electronics – 1 year (Parts Only)

Consumers are responsible for all shipping costs associated with warranty parts and labor costs. All warranty claims are subject to manufacturer review. Please make sure to have your sales receipt information and product serial number located on the outside left side panel of the appliance. All replacement parts can be purchased from BBQGuys.com.



Electric Grill
Owner's Manual
ELSTBBQ

customerservice@bbqguys.com

1-877-743-2269

8151 Airline Hwy

Baton Rouge, LA 70815