



**iChef ET-736  
WiFi Roasting Thermometer**

**Quick Start Guide for Android**



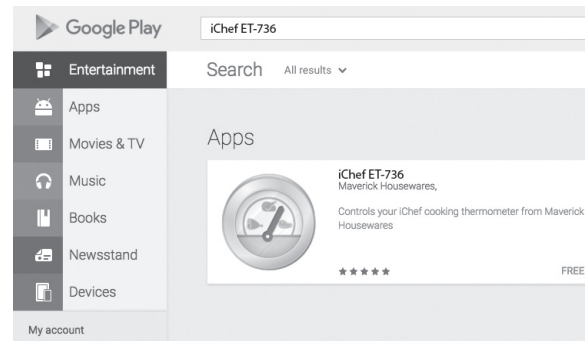
1

**STEPS:**

1. PREPARE THE ANDROID DEVICE
2. PREPARE THERMOMETER
3. CONNECT THERMOMETER TO YOUR HOME WiFi NETWORK
4. SETUP DESIRED COOKING TEMPERATURES

**STEP 1: PREPARE THE ANDROID DEVICE**

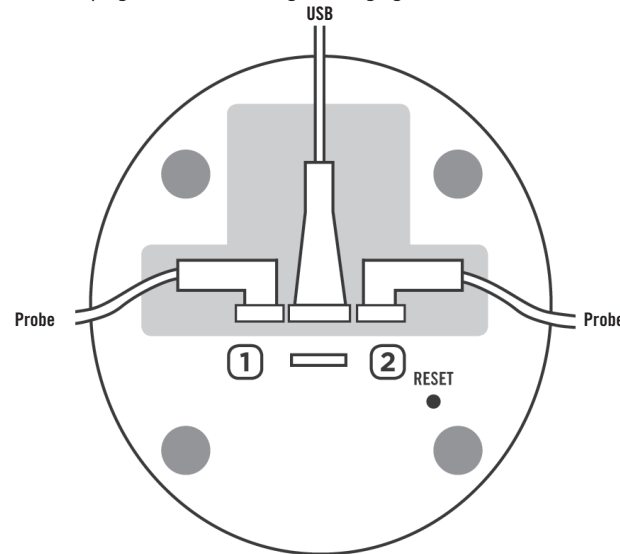
- Make sure your device is connected to your home WiFi network.
- Go to the Google Play store and locate the free **iChef ET-736** app by searching for “**iChef ET-736**”. Download to your phone or tablet.



2

**STEP 2: PREPARE THE THERMOMETER**

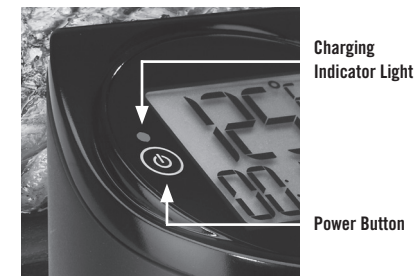
- Turn the thermometer upside down and plug in the USB charging cable and probes. **NOTE:** Use only the supplied USB charging cable. Other USB cables **CANNOT** be used, they will not fit into the water-resistant fitting on the iChef.
- Connect the other end of the charging cable into the charger plug and plug it in so the unit begins charging.



- Completely charge the unit before first use. The charging indicator light on the right front of the unit will be green when it is fully charged. (Once charged, the thermometer lasts for several hours.)

3

- Move your thermometer and android device to the same place, close to your home WiFi router.



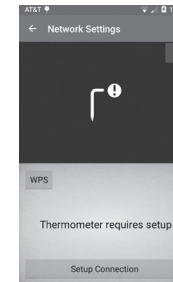
**STEP 3: CONNECT THERMOMETER TO YOUR HOME WiFi ROUTER**

- Turn on the thermometer by holding the power button for a few seconds until it turns on.
- Verify the two probe wires and the USB wire are plugged in. If you only want to cook with one probe, unplug a probe after setup.
- Open the iChef ET-736 app on your Android device. If you see the welcome screen, click “Begin Setup.” If not, click the Settings button in the upper right corner of your screen and then select “Connection.”

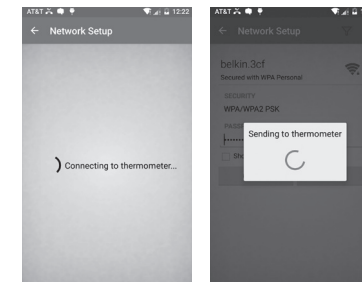


4

- Now wait until you see “Thermometer Requires Setup.”
- Optionally, if your router supports WPS configuration, you may click the WPS button for further instructions.
- Otherwise, click “Setup Connection.”
- If the screen shows “Searching...” for longer than 3 minutes, see the Troubleshooting Guide.



- Wait for the app to connect to the thermometer and display the network configuration screen.

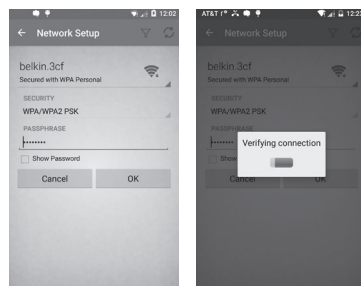


5

- Enter your WiFi network password if required and click OK.

- Wait up to one minute. While waiting, the app should display “Verifying Connection.”

- Check to see if the connection is successful. If it is successful, the app displays “Success” and then “Connected to Network.” If not, the app displays an error message and starts the connection process over again. If any problem occurs, please see the Troubleshooting Guide.



6

- Your thermometer is connected and you are now ready to cook! Hit the back button to get back to the screen showing the probe temperatures.

- Note: If you want to use your iChef on another WiFi network, you must reset it first by pressing the pinhole reset button and going through this set up process again.

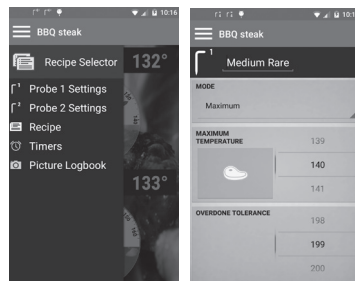
#### STEP 4: SETUP YOUR DESIRED COOKING TEMPERATURES AND PLACE YOUR TEMPERATURE PROBES.

- In the iChef ET-736 app, open the Probe Settings. If you see a side menu on the left, click “Probe 1 Settings”. Otherwise, you need to slide out the side menu first. To do this, click menu icon in the upper left.

- Click the meat icon and select a cooking temperature.

- Open the side menu again and select “Probe 2 Settings” if you would like to set a temperature for Probe 2.

- Click back to return to the Probe Temperature screen.



7

- Insert the probes into your meat and leave the base unit outside your oven or grill.

- As you cook, the app estimates how much cooking time is left. It also reports the time left by speaking it aloud.



#### REMEMBER:

Do not touch the probes in the oven, they can be hot. Also, different parts of food heat at different temperatures so be sure to carefully position the probes.

When you are done, you can explore some of the other app features including timers, recipes, and the ability to take pictures of your food and share them.

Enjoy your new iChef ET-736 WiFi Roasting Thermometer.

8

#### TROUBLESHOOTING:

**If your WiFi configuration fails or the app never finds the thermometer, do these steps before trying again:**

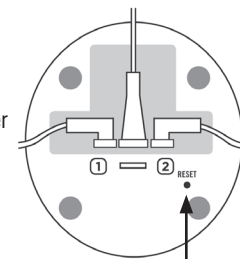
- Make sure the thermometer is charged or plugged in and turned on.

- Make sure you enter the correct WiFi password.

- Move your Android device closer to the thermometer.

- Move your Android device and thermometer closer to the WiFi router to get a stronger signal.

- Press the Reset button to remove all WiFi settings. To do this, locate the pinhole Reset button underneath the thermometer (see picture on right). Insert one of the temperature probe tips into the hole to press the button. After pressing, the thermometer will beep, erase all WiFi settings, and restart.



Pinhole Reset Button

- Turn off your WiFi router, wait 1 minute, then turn it back on.

- Turn off your Android device and turn it back on.

- Make sure your Android device has the latest system updates installed.

9

#### Maverick Limited 1 Year Warranty

Maverick Industries, Inc. warrants this product to be free of defects in parts, materials and workmanship for a period of 1 year from date of purchase. Should any repairs or servicing under this warranty be required, contact Maverick Customer Service by mail or phone for instructions on how to pack and ship the product to Maverick's National Service Center located as follows:

#### Maverick Customer Service

94 Mayfield Ave.  
Edison, NJ 08837  
Telephone: (732) 417-9666  
Hours: Weekdays 8:30 am - 4:30 pm

Do not send any parts or product to Maverick without calling and obtaining a Return Authorization Number and instructions. This warranty is VOID if instructions for use are not followed; for accidental damage; for commercial use; for damage incurred while in transit; or if the product has been tampered with. This warranty gives you specific legal rights and you may also have other rights which vary from state to state.



www.maverickhousewares.com

QS Android rev 11-2016 b

10