

READ AND SAVE THESE INSTRUCTIONS

# EVERDURE



OPERATION, MAINTENANCE  
AND SAFETY INSTRUCTIONS

**EWC46SS**

Due to ongoing product development, images shown are subject to change without warning

# TABLE OF CONTENTS

Important Safety Instruction.....	2 – 4
Installation.....	5 – 7
Product Description.....	8
Operation.....	9 – 11
Maintenance and Cleaning.....	12
Troubleshooting.....	13

## IMPORTANT

Read the safety precautions of this booklet carefully before attempting to assemble, install, operate or maintain the product described. Protect yourself and others by observing all safety information. Failure to comply with instructions could result in personal injury and/or property damage. If you are unsure about anything regarding your fan or these instructions, please contact Everdure by email at [sales@shrirousa.com](mailto:sales@shrirousa.com) before operating your appliance.

1. Read all instructions carefully before using the wine cooler.
2. This appliance is intended for HOUSEHOLD USE ONLY and not for commercial or industrial use.
3. Use this wine cooler only as described in this manual. Any other use not recommended by the manufacturer may cause fire, electrical shock, or injury to persons. Do not modify this appliance. Do not try to repair this appliance – there are no user serviceable parts within.
4. Remove the packaging and ensure that the appliance is undamaged (keep packing box for later storage). In case of doubt do not use the appliance and contact Everdure Service. Do not let children play with any parts of the packaging.
5. Before you use the appliance, check if the voltage marked on the rating label corresponds to the mains in your home.
6. Do not use this appliance with a programmer, timer or any other device that switches the appliance on automatically, since a fire risk exists if the appliance is covered or positioned incorrectly.
7. Do not pull the power cord to disconnect with the power source. Always grasp the plug to pull it out.
8. Do not run power cords under rugs, curtains or other combustible materials. Do not place power cords in areas where they can be a tripping hazard.
9. Do not leave the appliance unattended. Always unplug the appliance when not in use. Take care that it is not obstructed when oscillating.
10. This appliance can be used by children aged from 8 years and above and persons with reduced physical, sensory or mental capabilities or lack of experience and knowledge if they have been given supervision or instruction concerning use of appliance in a safe way and understand the hazards involved. Children should be supervised to ensure that they do not play with the appliance. Cleaning and user maintenance shall not be made by children without supervision.
11. Keep ventilation openings, in the appliance enclosure or in the built-in structure, clear of obstruction.
12. Do not use mechanical devices or other means to accelerate the defrosting process, other than those recommended by the manufacturer.
13. Do not damage the refrigerant circuit.
14. Do not use electrical appliances inside the storage compartments of the appliance, unless they are of the type recommended by the manufacturer.

15. Make sure that the appliance is connected to power supply in accordance with the rating label.
16. Do not connect to transformer or socket with multiple outlets.
17. Make sure socket is grounded properly and do not modify power cord & plug.
18. Connect power plug with socket firmly in case of possible risk of fire.
19. Plug should be within reach for easy disconnection after the appliance positioned in case of accidents occurred.
20. Do not store or burn gasoline or other inflammable near the appliance in case of possible fire.
21. Do not store inflammables, explosives, acid & alkaline liquids etc.in the compartment of the appliance.
22. Do not operate other appliances in the compartment.

### **Child Safety**

- Do not allow child play inside the appliance in case of entrapment.
- Do not allow child hang on the door to play in case of falling of the appliance.
- Do not allow child reach into compressor compartment or touch metal components at rear of the appliance in case of possible injury.

### **Keep away from water**

- Do not spray water on the appliance or wash the appliance by pouring or filling water in case of invalid insulation and possible electric shock.

### **Be careful of freezing**

- Do not touch surface of the liner inside the compartment, especially with wet hand, in case of frozen injury while the appliance is in operation.

### **Do not open the door for long periods**

- Opening the door for long periods can cause a significant increase of the temperature in the compartments of the appliance.

### **Modification on the appliance not allowed**

- Do not reconstruct the appliance by yourself which might cause damages to the appliance.

### **Unplug the appliance under certain conditions**

- Unplug the appliance before cleaning & maintenance.
- Unplug the appliance when power cut occurred.

## **Disposal of the appliance**

- Please according to local regulations regarding disposal of the appliance for its flammable refrigerant and blowing gas.
- Before you scrap the appliance, please take off the doors to prevent children trapped.
- Send the appliance to the designated disposal location.

## **Do not damage the power cord**

- Do not disconnect the appliance by pulling power cord rather than pulling the plug.
- Do not set the appliance above the power cord or step on the cord intentionally.
- Put the power cord at right place when moving the appliance.

## **When the power cord is damaged**

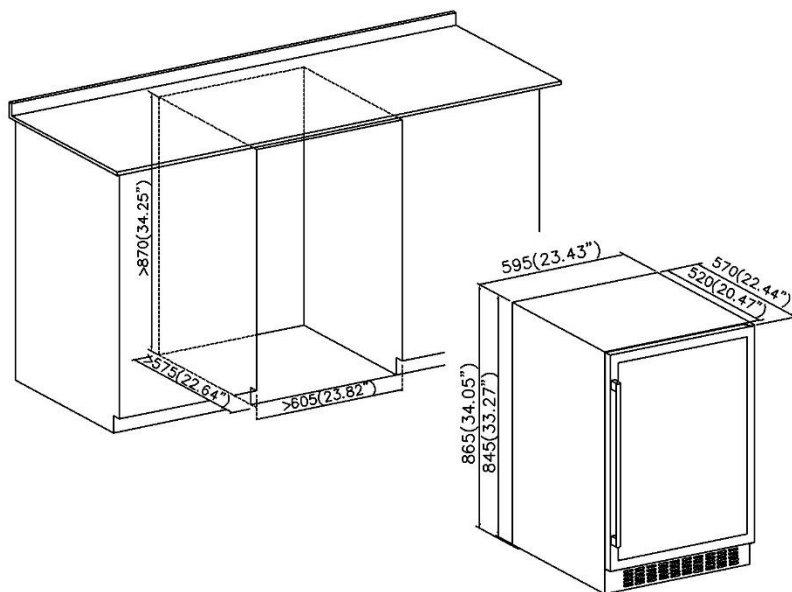
- Do not use damaged power cord, and get it replaced immediately by manufacturer service agent or by qualified electrician.
- If needed, extend the power cord with cord of 0.75mm<sup>2</sup> or bigger by qualified electrician.

## Position

- Do not lean the appliance over 45° when moving it to position.
- The appliance must be put on flat, firm and dry floor or similar non-combustible pad; do not use the package foam pad.
- Do not put the appliance in the wet place.
- Do not use the appliance in the frozen place.
- Do not use the appliance outdoor.

**The appliance is designed to either build under the counter or stand alone on the floor.**

Demonstration for building under the counter:



## Installing the handle and reversing the door of wine cooler

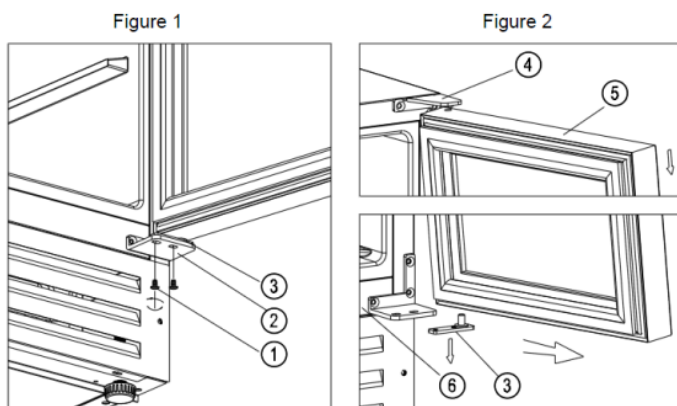
1. Install handle to the door frame of the appliance.

The handle is delivered in a separate package with screws together inside the carton.

- ① Reveal two small holes on the door frame from inner side by pulling out a bit the door seal.
- ② Aim the handle to the holes and insert the screws from inside.
- ③ Screw them up with screwdriver
- ④ Put back door seal to cover the screws.

2. Reversing the door

Our wine cooler is delivered with the door opening from left to right. To reverse the opening direction:



- ✧ Open the door at 90 degrees and keep it steady.
- ✧ Unscrew the two screws ① from the right lower hinge ② [Figure 1].

- ✧ Pull the door ⑤ outwards slowly [follow the arrow direction in Figure 2] to get off the lower hinge ② and continue to pull the door ⑤ downwards slowly until getting off from the top right hinge ④, and take off the lower hinge plate ③ from the door axis hole [Figure 2].

Figure 3

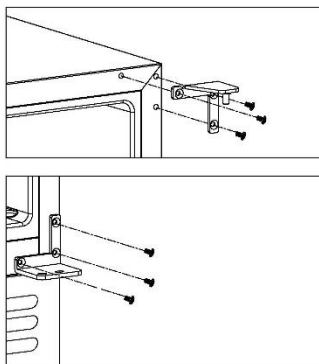
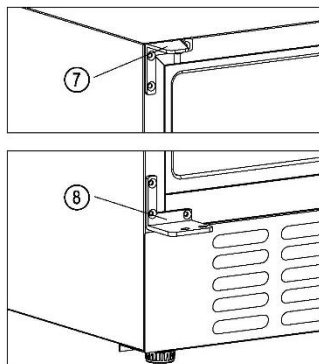
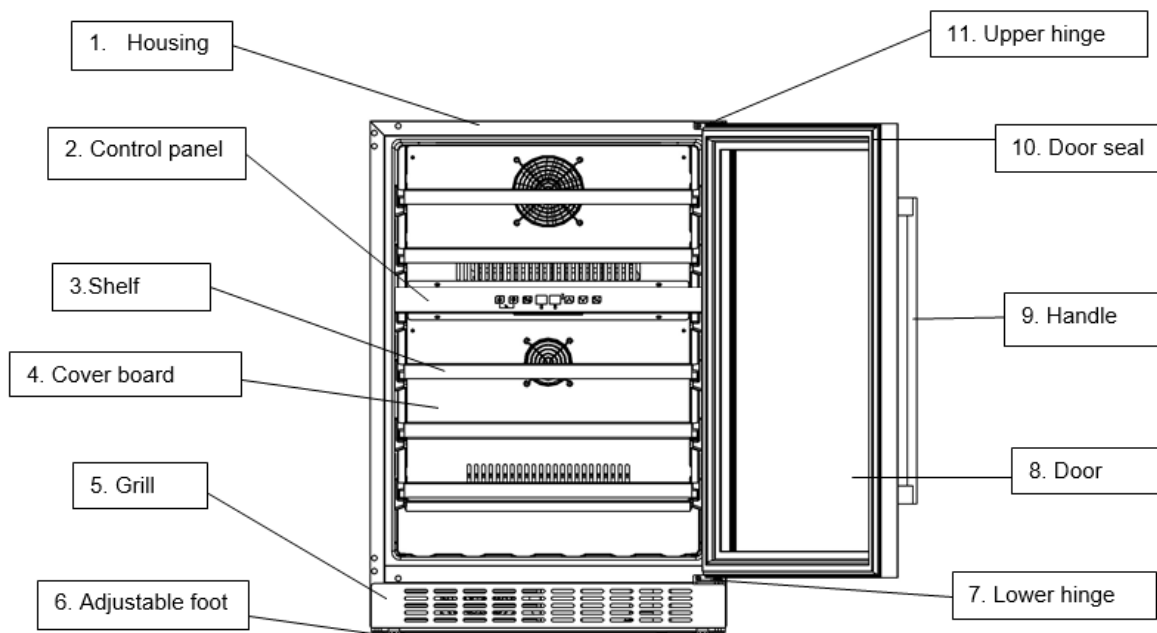


Figure 4



- ✧ Screw top right hinge ④ and right lower hinge ② off from the cabinet ⑥ and keep them in the polybag for needs if you want to change back left opening door in the future [Figure 3]
- ✧ Install the top left hinge ⑦ and left lower hinge ⑧ to the left side of the cabinet. (⑦ and ⑧ delivered in a separated polybag inside the packing carton). [Figure 4]
- ✧ Turn the door ⑤ 180 degrees upside down and insert the lower hinge plate ③ to the bottom door axis hole. Fit the top door axis hole to the top left hinge ⑦ and put lower hinge plate ③ slowly on the left lower hinge ⑧ and keep the door steady. Screw up the left lower hinge with the plate. Door reversing is finished.

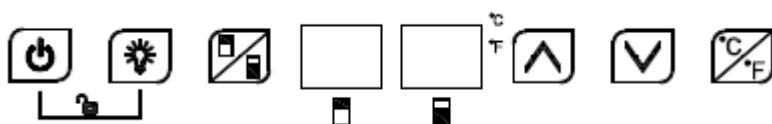




<b>Product model</b>	EWC46SS
Voltage/frequency	110-120V ~ 60Hz
Refrigerant/weight	R600a/33g
Effective volume	137L
Loading capacity	46 bottles

Note: Loading capacity will vary in terms of different way of bottle arrangement or different bottle sizes (standard Bordeaux with 750ml is applied here).

## Control panel



All keys would be invalid in lock mode. Please unlock first.



### ON/OFF

1. Keep pressing the key 3 seconds, power down, goes to stand-by mode.
2. Keep pressing the key again 3 seconds to return back to normal working.



### Light

Press the key, turn on or turn off the LED lights inside. In stand-by mode, the key is invalid.



### Zone switch

Press the key to switch between upper zone and lower zone for choosing which zone to set temperature. Press the key once, the LED display in chosen zone flash regularly. Press up and down key to set temperature. Press the key again; switch the zone to set temperature.



### UP

Press the key once, LED Display in regular flash showing current set temperature. Continue pressing to adjust set temperature, one press increase 1°. Regular flash quit after 5 seconds detecting no press and new set temperature save. LED display return to show actual temperature inside.



### Down

Press the key once, LED Display in regular flash showing current set temperature. Continue pressing to adjust set temperature, one press reduce 1°. Regular flash quit after 5 seconds detecting no press and new set temperature save. LED display return to show actual temperature inside.



## Child Lock (Combination key)

1. Lock: Press both keys at the same time for 3 seconds to lock.
2. Unlock: Press both keys at the same time for 3 seconds to unlock.



## Fahrenheit/Celsius display interchange

Switch temperature display between Fahrenheit and Celsius by pressing and holding the key for 2 seconds.



## Attention

1. For both upper and lower zone, the cooling temperature could be set from **41-71 °F**. And temperature of lower zone could only be set equal to or higher than that of upper zone.
2. Alarm sound: when system malfunction occur and alarm sound, press any key on the control panel to cancel the alarm sound.
3. Error code:

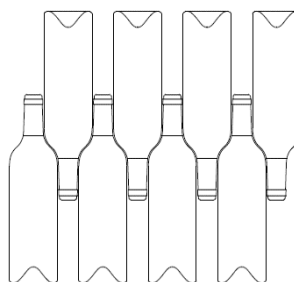
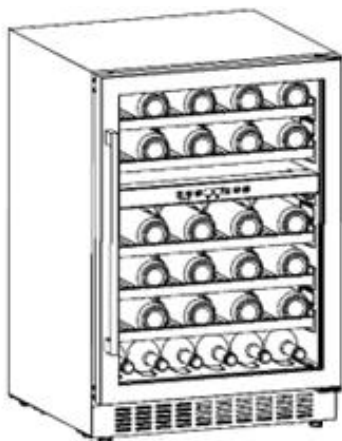
When the temperature sensor of upper zone failure occur, error code displays: E1 for open circuit; E2 for short circuit.

When the defrost sensor failure occur, error code displays: E3 for open circuit; E4 for short circuit.

When the temperature sensor of Lower zone failure occur, error code displays: E5 for open circuit; E6 for short circuit.

## Wine storage

- ✧ The appliance equip with sufficient independent shelf to allow your collection of wine get mature quietly and peacefully.
- ✧ Full wooden shelves loading capacity: **46** bottles. (standard Bordeaux with 750ml)



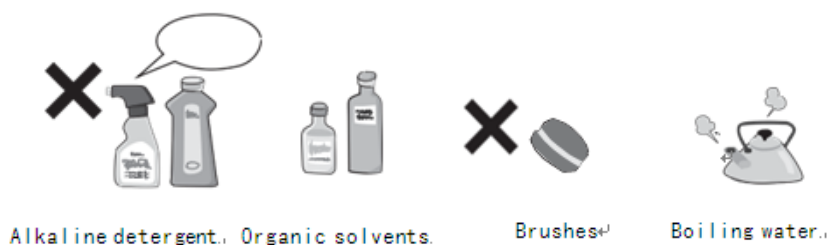
- ✧ Loading capacity will vary in terms of different way of bottle arrangement or different bottle sizes.
- ✧ Each shelf is designed to put 1 or 2 layers of wine bottles. More than 2 layers of bottle arrangement on one shelf are not recommended.
- ✧ Each shelf with sliding roller could pull out partly to store wine bottles easily.
- ✧ Open the door straight enough before pulling out shelves.
- ✧ If the wine cooler has no load for a long time, it is recommended to power it off, clean it carefully, and open the door for ventilation.
- ✧ Below table is the recommended temperature for wine storing & drinking:

Red Wine	59 – 64 °F (15 – 18 °C)
White Wine	48 – 57 °F (9 – 14 °C)
Rose wine	50 – 52 °F (10 – 11 °C)
Champagne & sparkling wine	41 – 46 °F (5 – 8 °C)

## Cleaning

- Disconnect the appliance before cleaning.
- Clean the appliance with soft cloth or sponge by water.
- Do not use organic solvents, alkaline detergent, boiling water, washing powder or acid liquid etc.
- Do not flush the compartment of the appliance.
- Clean regularly surfaces that can come in contact with accessible drainage systems.

The below items will damage the surface of wine cooler:



## Power cut

Most power cuts could be resolved within a short time. To protect your wines during a power cut, avoid opening the door as much as possible. During very long power cuts, take the necessary measures to protect your wine.

## Out of service for long time

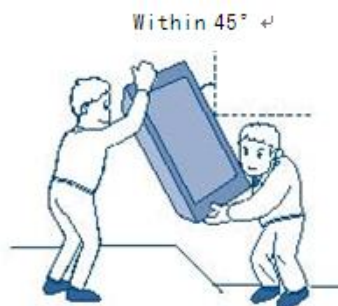
Remove all bottles from the appliance, switch off, defrost, clean, dry, and leave the door open to prevent mold developing within the appliance.



If the appliance is disconnected or if there is a power cut, you must wait at least five minutes before re-starting.

## Moving the appliance

- Cut off the power supply and unplug the appliance.
- Remove all bottles from the appliance.
- When moving the appliance, do not lean the appliance over 45°.



The appliance makes lots of noise?	<ul style="list-style-type: none"> <li>● Please adjust the front foot, keep the appliance leveling.</li> <li>● Please keep the appliance a bit space from walls.</li> </ul>
Liquid flowing sound inside the cabinet?	<ul style="list-style-type: none"> <li>● It is normal because of the refrigerant working inside.</li> </ul>
The appliance does not start?	<ul style="list-style-type: none"> <li>● Make sure the appliance is connected to the power properly.</li> <li>● Make sure switch on the power.</li> <li>● The compressor re-starts after 5 minutes for a power cut.</li> </ul>
Compressor runs continuously?	<ul style="list-style-type: none"> <li>● If no cold is being produced, call the after-sale service.</li> </ul>
Door does not seal tightly?	<ul style="list-style-type: none"> <li>● After long time use, the door seal might get stiff &amp; distorted partially.                             <ol style="list-style-type: none"> <li>1. Heat the door seal with hot-wind blower or hot towel.</li> <li>2. The door seal get softened and close the door.</li> </ol> </li> </ul>
The appliance does not cool sufficiently?	<ul style="list-style-type: none"> <li>● Please adjust temperature setting.</li> <li>● Keep the appliance away from sunlight or heat.</li> <li>● Please do not open the door frequently.</li> </ul>
Unpleasant smells inside cabinet?	<ul style="list-style-type: none"> <li>● A little bit plastic smell for newly-buy appliance is normal and will disappear after a short time.</li> <li>● Clean the compartment and ventilate it for a few hours.</li> </ul>
Condensate on the glass door?	<ul style="list-style-type: none"> <li>● Please do not open the door frequently or for a long time.</li> <li>● Please do not set the temperature too low.</li> <li>● High ambient temperature and humidity would cause condensate.</li> </ul>
The light is not working?	<ul style="list-style-type: none"> <li>● Check the power supply first.</li> <li>● Call the retailer's after-sale service if the light is broken.</li> </ul>

# EVERDURE

**It is important that you retain these instructions, proof of purchase as well as other important documents about this product for future reference. Due to continual product development, Everdure reserves the right to alter specifications or appearances without notice.**

**Dispose of packaging responsibly - recycle where facilities are available.**

**SHRIRO USA INC. Incorporation Number 7164875  
25541 Arctic Ocean Drive  
Lake Forest, CA 92630 USA  
Tel (sales): +1 (949) 229 8927 Tel (HQ): +61 2 9415 5000  
Em: [sales@shrirousa.com](mailto:sales@shrirousa.com)  
Website: [www.everdure.com](http://www.everdure.com)**