



810 WEST WASHINGTON BOULEVARD
CHICAGO, IL 60607

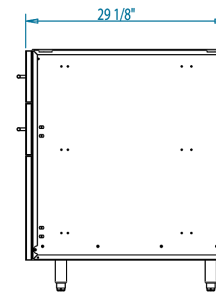
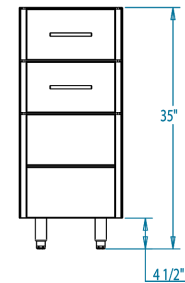
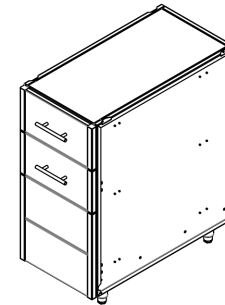
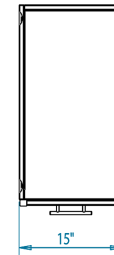
8566 KRUM AVENUE
GALESBURG, MI 49053

KALAMAZOOGOURMET.COM
+1.800.868.1699

Arcadia 15-inch Drawer Over Door Storage Cabinet



Overall Width / Installation Width	15 in (381 mm) / 15 in (381 mm)
Overall Depth / Installation Depth	29 1/8 in (739.78 mm) / 29 1/8 in (739.78 mm)
Overall Height / Counter Height	35 in (889 mm) / 35 in (889 mm) +/- 1/2 in (12.7 mm)
Approximate Product Weight	190 lb (86.2 kg)



PRODUCT FEATURES

- Offered in a variety of finish options, including a stunning oiled ipe wood and a wide range of powder-coated stainless steel colors
- Available in 200+ custom RAL colors of powder-coated stainless steel
- Hand-crafted stainless steel cabinet bodies with stainless steel hardware
- Full-extension stainless steel ball bearing slides for drawers
- Designed to fit a uniform 30-inch-deep system
- Stainless steel leveling legs for easy installation
- Field-swappable door hinges, no additional parts or tools needed
- Fully assembled and ready to install
- Available in marine-grade stainless steel
- Hand-crafted with pride in Kalamazoo, Michigan

* HEIGHT ADJUSTABLE +/- 1/2 in (12.7 mm)

WARNING: This product can expose you to chemicals including nickel, which are known to the State of California to cause cancer, and lead, which is known to the State of California to cause birth defects or other reproductive harm. For more information go to www.P65Warningsca.gov