



# BUILT-IN GRIDDLE

## Owner's Manual

Appliances illustrated in this manual may differ from model purchased.



**We Want Your Feedback!**

Visit [Napoleon.com](http://Napoleon.com) to write a review.



Apply Serial Number



# CONGRATULATIONS ON YOUR NAPOLEON GRIDDLE!

You've Just Upgraded Your Grilling Game.

**WE WANT YOUR GRILLING EXPERIENCE TO BE MEMORABLE AND SAFE.**

Please read and follow this Owner's Manual before using your appliance to avoid property damage, personal injury, or death.

Remove all packaging material, promotional labels and cards from the appliance before use.

**USE OUTDOORS IN A WELL-VENTILATED SPACE.**

**DO NOT OPERATE IN A BUILDING, GARAGE, OR ANY OTHER ENCLOSED AREA.**

## **DANGER!**

### **IF YOU SMELL GAS:**

- Shut off gas to the appliance.
- Extinguish any open flame.
- Open lid.
- If odor continues, keep away from the appliance and immediately call your gas supplier, or fire department.

## **WARNING!**

Do not try to light this appliance without reading the **LIGHTING** instructions section of this manual.

Do not store or use gasoline, or other flammable liquids or vapors in the vicinity of this or any other appliance.

An L.P. (propane) cylinder not connected for use must not be stored in the vicinity of this or any other appliance.

If the information in these instructions is not followed exactly, a fire or explosion may result and cause property damage, personal injury, or death.

**Alert adults and children about the hazard of hot surface temperatures. Supervise young children near the appliance.**

**NOTICE TO INSTALLER:** Leave these instructions with the appliance owner for future reference.

**NOTICE TO CONSUMER:** Keep these instructions for future reference.

# Welcome to Napoleon!

## SAFETY FIRST



### **WARNING! General Information**

This appliance should be installed in conformity with local codes.



### **WARNING! Electrical Precautions**

Keep all electrical supply cords and fuel supply hoses away from all heated surfaces.

First connect all electrical components to appliance, then plug into outlet. Use only a Ground Fault Interrupter (GFI) protected circuit with this outdoor cooking appliance.

Never remove the grounding plug. Use only extension cords that have been rated for the power of the equipment and approved for outdoor use with W-A marking.

If the power cord is damaged, replace with a full power cord and transformer assembly recommended by Napoleon.



### **WARNING! Installation & Assembly**

Assemble this appliance exactly as instructed in the Assembly Guide. If the appliance was assembled in-store, review the assembly instructions to ensure it is done correctly.

Perform the required Leak Test before operating the appliance.

Do not modify this appliance under any circumstances.

Only use the pressure regulator and hose assembly supplied with this appliance or replacement parts specifically recommended by Napoleon.



### **WARNING! Operation**

Read this entire Owner's Manual before operating this appliance. Leak Test this appliance before each use, annually and when any gas components are replaced.

Follow the lighting instructions carefully.



### **WARNING! Storage & Disuse**

Disconnect the hose between the gas cylinder and appliance.

Remove the gas cylinder and store outdoors in a well-ventilated space away from children.

DO NOT store gas cylinders in a building, garage, shed, or any other enclosed space.



### **WARNING! Correct Product Disposal**

This marking indicates that this product should not be disposed with other household wastes throughout the EU. To prevent possible harm to the environment or human health from uncontrolled waste disposal, recycle it responsibly to promote the sustainable reuse of material resources. To

return your used device, please use the return and collection systems or contact the retailer where the product was purchased. They can take this product for environmental safe recycling.

## CONTENTS

Welcome to Napoleon!	3
Safety First	
Full System Features	4
Getting Started	5
Additional Safe Operating Practices	
Locating Your Appliance	
Cut-out Dimensions	
Gas Connections	
Maximum Cylinder Dimensions	
Leak Test	
Operation	11
Lighting your Appliance	
Cooking Instructions	
Burner Use	
The Cooking Experience Checklist	
Can You Season a Stainless Steel Griddle?	
Cooking Guide	14
Cleaning Instructions	15
Maintenance Instructions	18
Combustion in Air Adjustment	
Technical Data	
Stainless in Harsh Environments	
Troubleshooting	20
Diagram for Electrical Connections	
Assembly Guide	23
Replacement Parts	29
Exploded Overview	
Warranty	34

# Full System Features

Automatic detection and shut-off of gas flow in case of burner blowout.

Premium Stainless-Steel Construction designed for enduring quality and durability.

Industry-leading evenness of heat and quick warm-up times.

Large stainless steel cooking surface.

Precision Cooking with Dual Zone Control to cook a variety of foods at different temperatures simultaneously.

Hinged, removable stainless steel lid.

Same installation footprint as our BIG32 built-in grill, for easy installation or upgrades.

Safety Glow Lights ensure safety and ambiance with glowing blue lights that transition to red when burners are in use.

Hassle-free cleaning with a removable front-loaded grease tray and integrated tool scraping system, maintaining a tidy cooking space.

Includes convenience of integrated power source to connect to BIB side burners (optional).

Integrated tool hook.

One-touch startup with an integrated electric ignition system.



The appliance illustrated in this Owner's Manual may differ from the model you purchased. Featured model: BIG32FTPSS-XX

# Getting Started



**DANGER / WARNING!** Advises of a hazard that could result in a fire, explosion, death or serious physical injury.



**WARNING / CAUTION!** Advises of a hazard that could result in minor physical injury or property damage.



Wear protective gloves.



Wear safety glasses.



**CAUTION!** Hot surface.



Important information.



Do not smoke while performing a gas leak test. Sparks or flames will cause a fire, explosion, damage to property, serious physical injury, or death.



Never use an open flame to check for gas leaks. Sparks or flames will cause a fire, explosion, damage to property, serious physical injury, or death.



**DANGER!** Immediately shut off the gas supply and disconnect.

## ADDITIONAL SAFE OPERATING PRACTICES

- Burner controls must be off when turning the gas cylinder valve on.
- Do not operate the appliance with the lid closed.
- Do not move the appliance during use.
- Turn off the gas supply at the source after use.
- Do not modify the appliance.
- Maintenance should only be done when the appliance is cool.
- Do not store lighters, matches, or any other combustibles inside the enclosure.
- Keep all electrical supply cords and fuel supply hoses away from all heated surfaces.
- Clean the drip tray regularly to avoid build-up and grease fires.
- Keep the burner venturi tubes free from spider webs and other obstructions by inspecting and cleaning regularly.
- Do not use a pressure washer to clean any part of the appliance.
- Do not locate this appliance where it can be exposed to high winds, especially when the wind can come from directly behind the appliance.
- Do not operate appliance under any combustible construction.
- This appliance is not intended to be installed in, or connected to, boats or recreational vehicles.
- This appliance must be kept away from flammable materials while in use.
- Always maintain proper clearance to combustibles 24" (610mm) to rear of unit, 7" (178mm) to sides.
- Additional clearance of 24" (610mm) is recommended near vinyl siding or panes of glass.
- Always maintain a minimum wall distance to combustibles of 17" (431mm) to the rear and 9" (228.6mm) to the sides.
- Always maintain a minimum distance of 17" (431mm) between other additional appliances.
- The minimum ambient operating temperature for safe use of the appliance is 0°F (-17.8°C).
- This appliance can be used by children from 8 years and above and persons with reduced physical, sensory, or mental capabilities or lack of experience and knowledge if they have been given supervision or instruction concerning use of the appliance in a safe way and understand the hazards involved.
- Children must not play with the appliance.
- Cleaning and user maintenance must not be carried out by children without supervision.

**CAUTION!** The hook-up and installation of the gas and hose connection must be performed by a licensed gas fitter, and leak tested before operating the appliance.

**CAUTION!** Ensure the hoses do not contact any high temperature surfaces of the appliance.

**WARNING!** Accessible parts may be very hot. Keep young children away.



## LOCATING YOUR APPLIANCE

It is important when selecting a location for your gas appliance, to ensure clearances to adjacent combustibles are met. This appliance is intended for installation on an outdoor patio or in your yard.

- This appliance shall only be used in an above ground open-air situation with natural ventilation, without stagnant areas, where gas leakage and products of combustion are rapidly dispersed by wind and natural convection.
- Do not use in a building, garage, or any other enclosed area.
- Do not incorporate the appliance into any built-in or slide-in construction. Do not obstruct any cylinder enclosure ventilation openings.
- Do not obstruct any cylinder enclosure ventilation openings.

Any enclosure in which the appliance is used shall comply with one of the following:

- An appliance is considered to be outdoors if installed with shelter no more inclusive than with walls on three sides, but with no overhead cover. (Fig. 1)
  - » All openings must be permanently open.
  - » Sliding doors, garage doors, windows, or screened openings are **not considered** as permanent openings.
- An appliance is considered to be outdoors if installed with shelter no more inclusive than within a partial enclosure that includes an overhead cover and no more than two sidewalls.
  - » The sidewalls may be parallel, as in a breezeway, or at right angles to each other. (Fig. 2 & Fig. 3)
  - » All openings must be permanently open.
  - » Sliding doors, garage doors, windows, or screened openings are **not considered** as permanent openings.
- An appliance is considered to be outdoors if installed with shelter no more inclusive than within a partial enclosure that includes an overhead cover and three sidewalls, as long as 30% or more of the horizontal periphery of the enclosure is permanently open. (Fig. 4 & Fig. 5)
  - » All openings must be permanently open.
  - » Sliding doors, garage doors, windows, or screened openings are **not considered** as permanent openings.

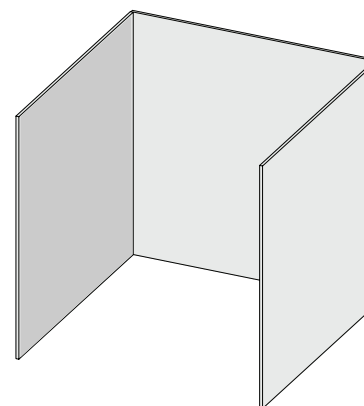


Fig. 1

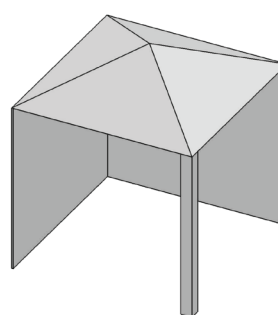


Fig. 2

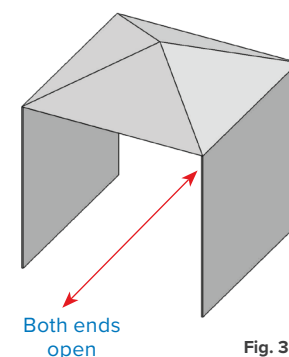


Fig. 3

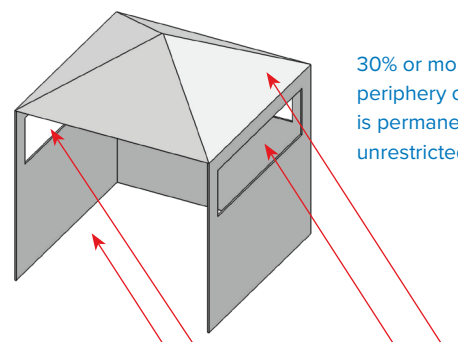


Fig. 4

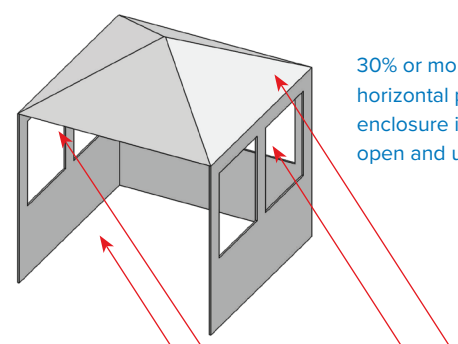
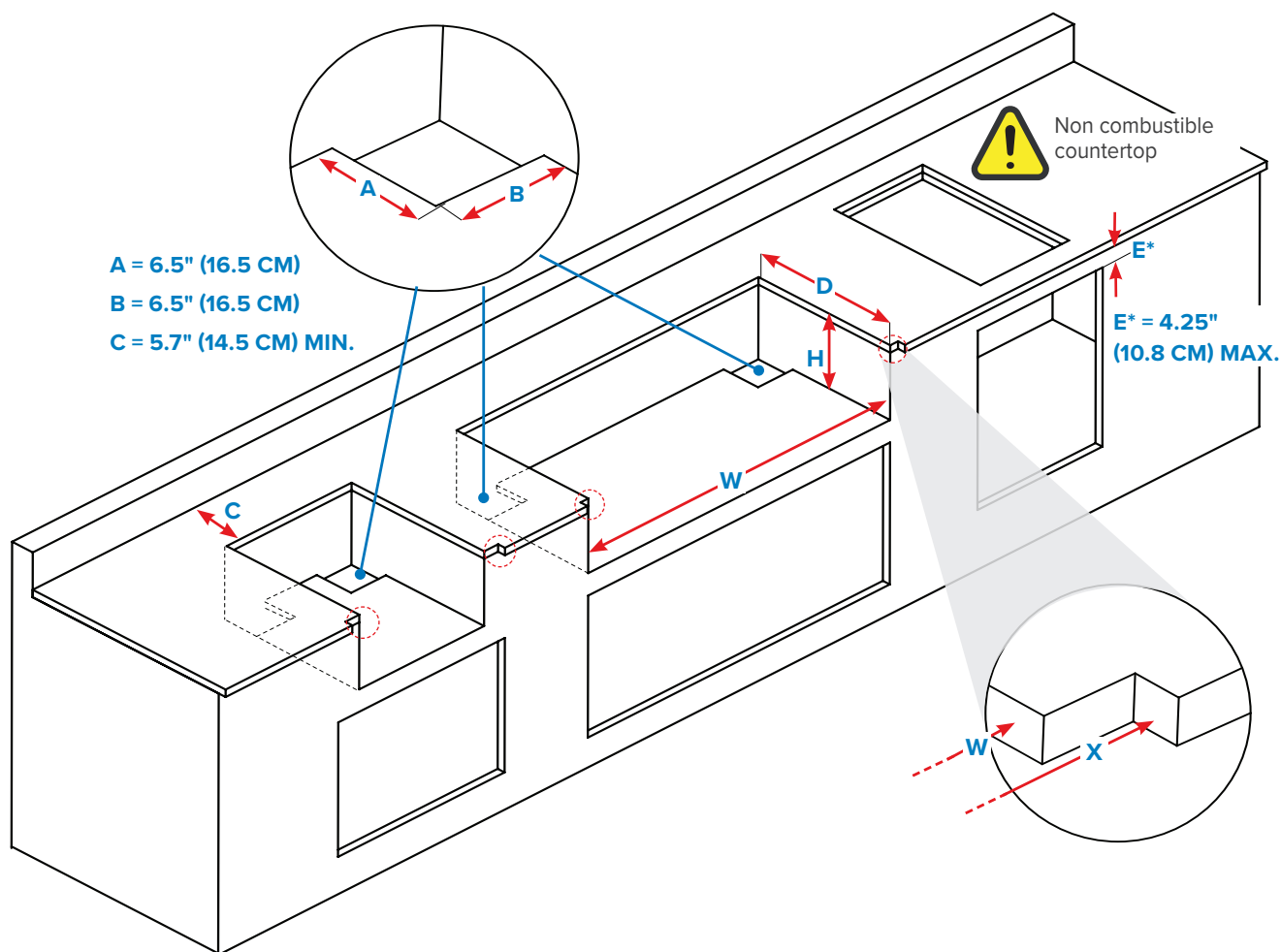


Fig. 5

## CUT-OUT DIMENSIONS

	OPENING DIMENSIONS (INCH / CM)				OPENING DIMENSIONS (INCH / CM) INSTALLING ZERO CLEARANCE LINER			
	W	X	D	H	W	X	D	H
Min.	30 / 76.2	33.50 / 85.1	19.4 / 49.3	10.25 / 26.0	34 / 86.4	35.38 / 89.9	21.38 / 54.3	10.38 / 26.4
Max.	32 / 81.3	-	19.75 / 50.2	-	-	-	-	-



**E\*** = For use with the installation of a Napoleon BI door.

**WARNING!** The cabinet frame and the cabinet **MUST** be made from non-combustible material when the appliance is not installed with the Zero Clearance Liner corresponding to your unit. Refer to the parts list in your Assembly Guide for specific information.

**CAUTION!** Securely fasten a protective cover to the appliance to protect it from severe weather.

**CAUTION!** If enclosure houses an LPG cylinder, this construction must comply with the built-in cylinder enclosure instructions. Refer to **Gas Connections**.



## GAS CONNECTIONS

Use a propane cylinder of minimum 6 kg or a butane cylinder of 13 kg constructed and marked in accordance with national and regional codes. It is recommended to locate the gas cylinder in a built-in enclosure. See: **If Placing the Cylinder in a Built-in Enclosure** for more information. Ensure that the cylinder can provide enough fuel to operate the appliance. If in doubt, check with your local gas supplier. **Note:** For optimal performance, operate the appliance on propane gas.

Only cylinders connected to the appliance may be stored in the enclosure. Only place cylinders within the maximum width and height dimensions in the built in enclosure. Spare cylinders must not be stored in the enclosure, or in close proximity with an operating unit. It must be carried out away from any source of ignition when changing the gas cylinder.

### To a House Gas Supply Line

This appliance must operate with a gas supply pressure as stated on the rating plate (Propane = 24.5 mbar). If the gas supply exceeds these requirements a regulator must be installed upstream of the appliance's components. If the gas supply is lower than the requirements, the unit will be under fired and will not reach the maximum temperatures.

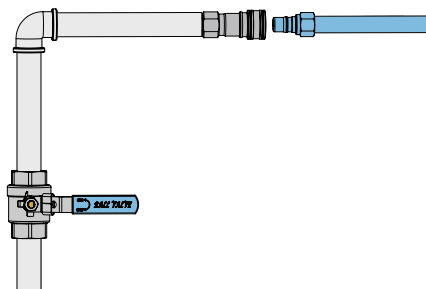
Use a gas pressure regulator and hose supplied by Napoleon; if not included, use a regulator and hose that meet national and regional codes.

The recommended length of the hose is 0.9 m. The hose must never be longer than 1.5 m. Check the hose regularly for rips melting or wear. Replace if needed. The piping up to the appliance is the responsibility of the installer.

**Note:** The hose should be replaced before the expiry date printed on it or according to the national requirement.

- The gas pipe must be sized to supply the kW specified on the rating plate, based on the length of the piping run.
- If you are installing a side burner, a separate gas line must be branched off to the unit through a specific opening in that location.

1. A readily accessible manual shut-off valve must be installed upstream of the unit. A flexible metal connector is included to simplify the installation. Connect the other end of the connector to the gas piping.
2. Tighten using two wrenches. Do not use thread sealer or pipe dope.
3. Ensure that the connector does not pass through a wall, floor, ceiling or partition, and is protected from damage.
4. Leak test all joints prior to operating the appliance. See **Leak Test**.



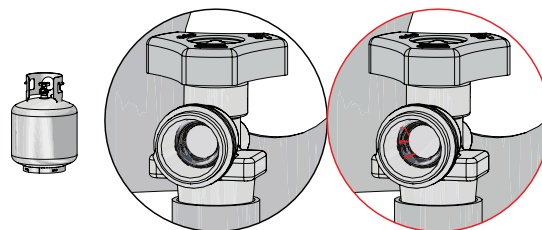
**WARNING!** The connectors must be of rigid pipe, copper tube or approved flexible metal which must comply with national and regional codes.

**WARNING!** Disconnect the appliance and its individual shutoff valve from the gas supply piping system during any pressure testing.



### Hook-up and Installation

1. Check the cylinder for dents or rust, and have it inspected by your propane supplier. Never use a cylinder with a damaged valve.
2. Place the cylinder in its designated area in the enclosure.
3. Ensure the gas regulator hose has no twists or kinks.
4. Remove the cap or plug from the cylinder fuel valve.
5. Tighten the regulator to the cylinder valve.
6. Ensure the hose does not contact with the drip pan or any high temperature surfaces of the appliance because it will melt and cause a fire.
7. Ensure the cylinder is not left exposed to extreme heat or direct sunlight.
8. Leak test all joints prior to operating the appliance. See **Leak Test**.



**WARNING!** Do not store a spare gas cylinder below the appliance.

**WARNING!** Do not use a gas cylinder that is more than 80% full.

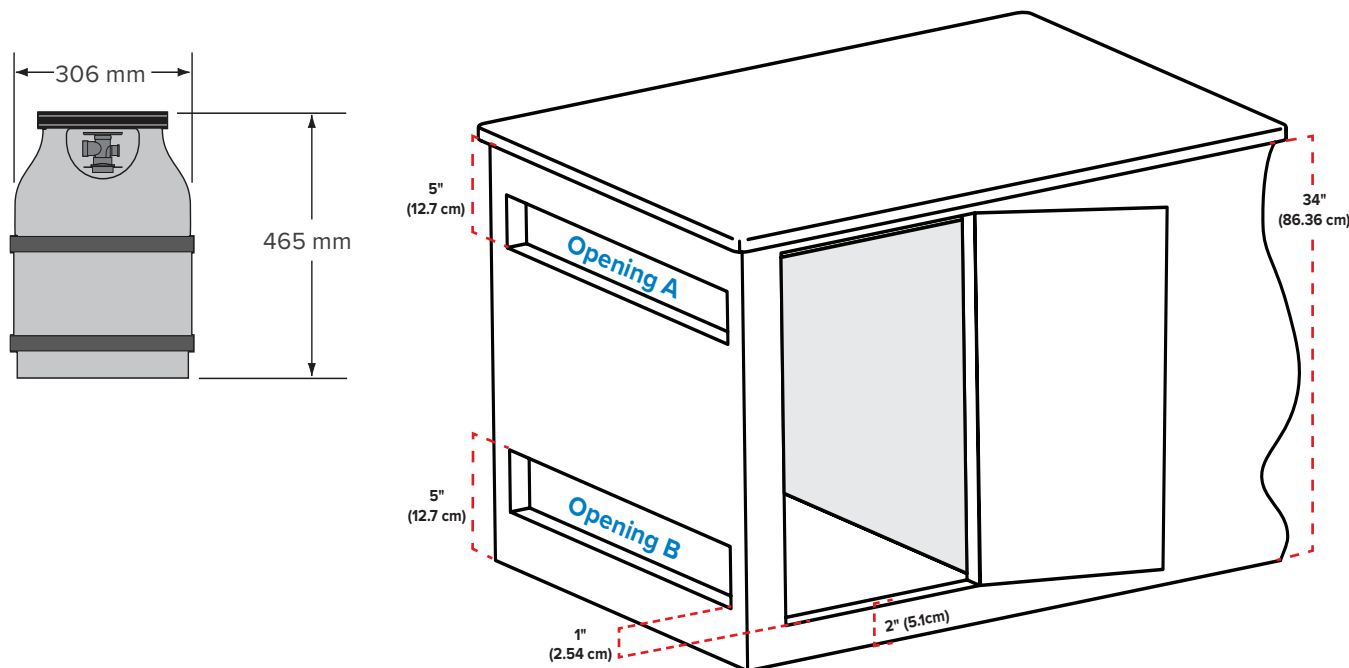


### If Placing the Cylinder in a Built-in Enclosure

- The design of the enclosure should allow for the gas cylinder to be connected, disconnected, and the connections inspected and tested outside of it. The connections that could possibly be disturbed when installing the cylinder in the enclosure can be leak tested inside.
- The cylinder must be isolated from the appliance enclosure, and protected from radiation, flames, hot drippings, and other foreign or hazardous materials.
- A door on the enclosure to access the cylinder is acceptable if it is non-locking and can be opened without using tools.
- There must be a minimum clearance of 2 in (5.08 cm) between the floor of the cylinder enclosure and the ground.
- Ensure there are at least two unobstructed ventilation openings on the exposed exterior side of enclosure, one within 5 inches (12.7 cm) of the top of the enclosure, and another within 1 inch (2.54 cm) of the cylinder opening's bottom surface.
- The top opening must have a total free area of more than 20 in<sup>2</sup> (130 cm<sup>2</sup>) for a 20 lb (9.1 kg) cylinder and 30 in<sup>2</sup> (195 cm<sup>2</sup>) for a 30 lb (13.6 kg) cylinder.
- The bottom opening must have a total free area of more than 10 in<sup>2</sup> (65 cm<sup>2</sup>) for a 20 lb (9.1 kg) cylinder and 15 in<sup>2</sup> (100 cm<sup>2</sup>) for a 30 lb (13.6 kg) cylinder. The upper edge must be no more than 5 in (127 mm) above the floor level.
- Every opening must be large enough to permit the entrance of a 1/8 in (3.2 mm) rod.
- The opening must have a free area depending on the cylinder size:

CYLINDER SIZE	OPENING A AREA	OPENING B AREA
20 lb (9.1 kg)	20 inches <sup>2</sup> (130 cm <sup>2</sup> )	10 inches (65 cm <sup>2</sup> )
30 lb (13.6 kg)	30 inches <sup>2</sup> (195 cm <sup>2</sup> )	15 inches <sup>2</sup> (100 cm <sup>2</sup> )

### MAXIMUM CYLINDER DIMENSIONS



**Note:** See **Assembly Guide** for additional propane storage.

**WARNING!** Follow all specifications and instructions precisely to prevent fire, explosion, property damage, personal injury, or death.

**WARNING!** Check the hose for evidence of excessive abrasion, melting, cuts or cracks. If the hose is damaged, it must be replaced with an assembly specifically recommended by Napoleon.



## LEAK TEST

### Why and When to Leak Test?

A leak test confirms no gas is escaping after you connect the hose to the gas supply.

Each time the tank is refilled and reinstalled, ensure that there are no leaks in the fitting where the regulator connects to the tank.

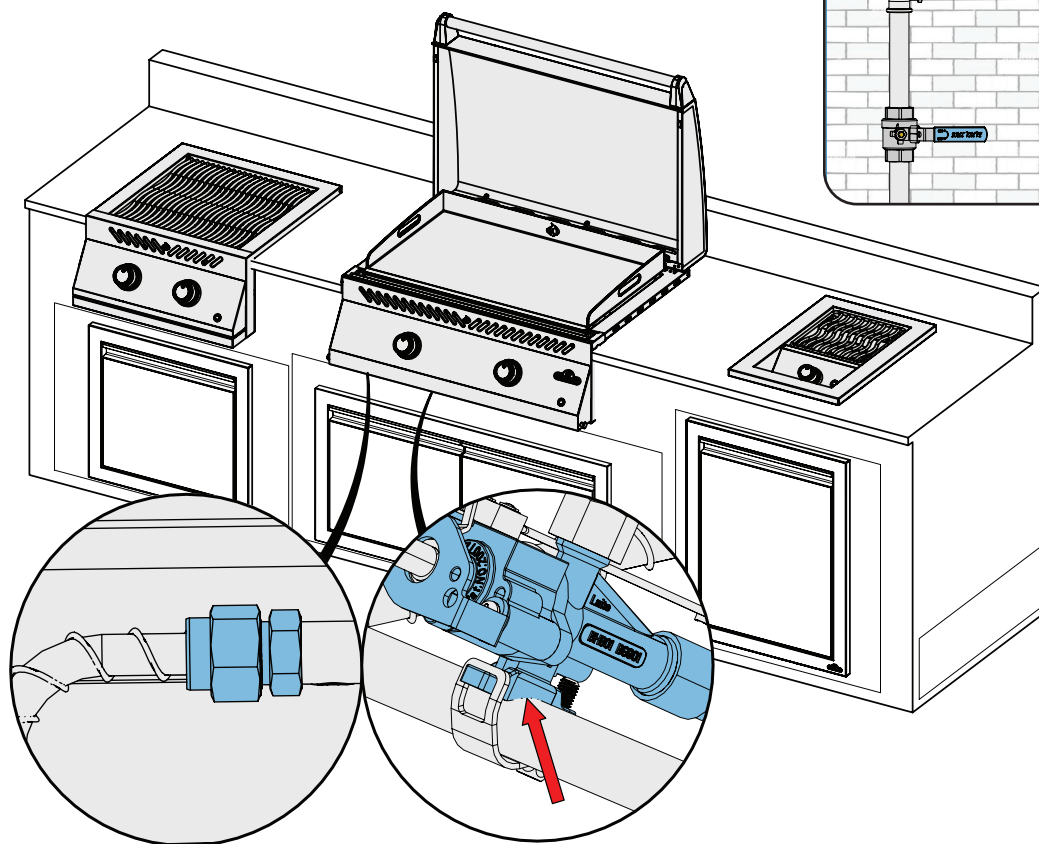
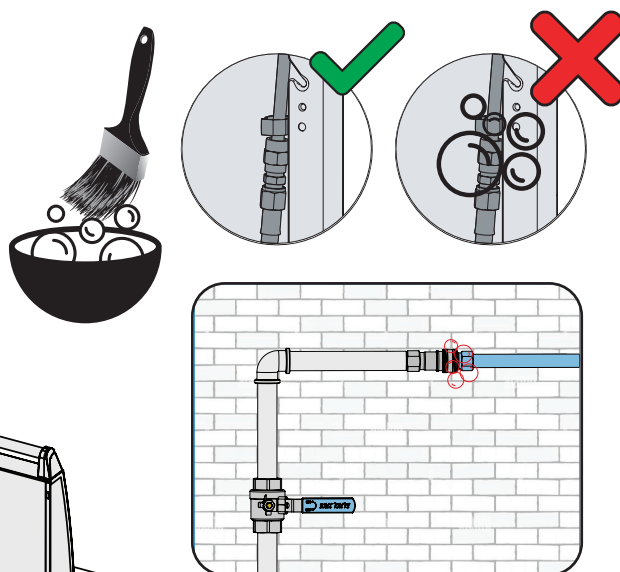
Leak test this appliance before use, annually, and when any gas components are replaced.

### Leak Test Steps

1. Do not smoke while performing the test.
2. Remove all sources of ignition.
3. Turn all burner controls to the off position.
4. Turn the gas supply valve on.
5. Brush a half-and-half solution liquid soap and water onto all joints and connections of the regulator, hose, manifolds, and valves.
6. Bubbles indicate a gas leak.

### If You Find a Leak

1. Turn off the gas supply.
2. Tighten any loose joints.
3. Turn on the gas supply.
4. Leak test again with soap and water solution.
5. If the leak persists, turn off the gas supply and disconnect the appliance.
6. Have the appliance inspected by a certified installer, or dealer. Do not use the appliance until the leak has been fixed.



**WARNING!** Never use an open flame to check for gas leaks. Sparks or flames will cause a fire, explosion, damage to property, serious physical injury, or death.

**WARNING!** Only use the pressure regulator and hose assembly supplied with the appliance, or one in conformity with local codes.



# Operation

## LIGHTING YOUR APPLIANCE

### Is it the Very First Time? Perform a Burn-off

Run the burners on high for 30 minutes with the lid open. It is normal for the appliance to emit an odor the first time it is lit. This odor is caused by the “burn-off” of internal paints and lubricants used in the manufacturing process and will not occur again.

### Burner Lighting

1. Open appliance lid.
2. Pushing the knob in activates the igniter, you will hear a rapid clicking sound. Push and turn the burner control knob counter-clockwise to the HIGH position. Continue to push inwards on the control knob until the burner lights (the knob light will turn red when the burner lights). Release the control knob. (Fig. 1)
3. If the burner will not light, the knob will blink red until it senses a flame. If no flame is detected – turn the control knob clockwise to the OFF position. Wait 5 minutes for gas to dissipate. (Fig. 1)
4. Repeat step 2, or light with a match.

**Note:** The knobs will also blink if there is a blow out or malfunction. See **Troubleshooting**.

### Lighting with a Match

1. Clip the match into the supplied lighting rod.
2. Insert the lit match to the side underneath the griddle plate.
3. While turning the corresponding burner knob to high. (Fig. 2)

**Note:** In the event of a power outage, the appliance can be lit with a match.

### Lid Removal (Optional)

For your convenience, the appliance lid is designed to easily be removed. See **Assembly Guide**.

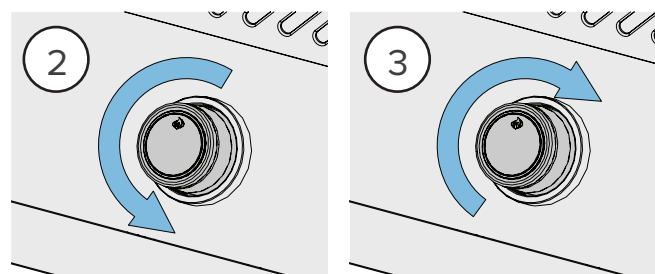
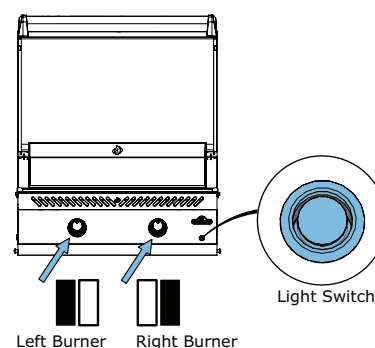


Fig. 1

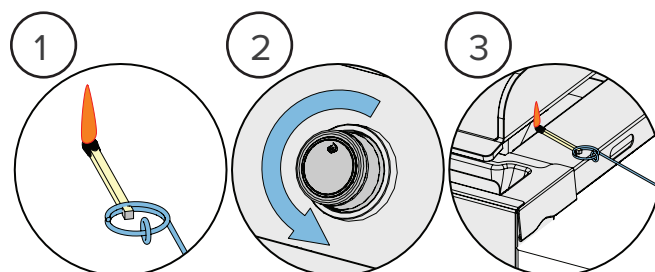


Fig. 2

**WE  
WANT  
TO HELP!**

Napoleon is here to ensure your cooking experience is memorable. Contact us if you require additional help.



**WARNING!** Ensure all burner controls are in the OFF position before slowly turning on gas supply valve.

**WARNING!** Follow the lighting instructions carefully.

**WARNING!** Make sure the lid of the appliance is OPEN while igniting.

**WARNING!** Do not adjust the griddle plate while the appliance is hot, or operating.



## COOKING INSTRUCTIONS

### Burner Use

- Preheat the appliance for up to 15 minutes or until the cooking surface reaches the desired temperature.
- Always keep the lid open when preheating and cooking.
- Use the two cooking zones to cook a variety of foods at different temperatures. (Fig. 1)
- Food is more likely to stick to the griddle plate if it is not hot enough. Use a thermometer designed for measuring the surface temperature of griddles to ensure the cooking surface is at the optimal temperature.
- The griddle plate should be oiled before cooking to prevent food from sticking. See **Can You Season a Stainless Steel Griddle?** (Fig. 2)
- Use the griddle plate to melt or warm sauces. Place pots or pans off to one side over low to medium heat. (Fig. 3)

#### BE CAREFUL!

The griddle and the entire firebox can become very hot when in use.

#### COOKING PRO TIP!

Use a thermometer to check the internal temperature of meat to ensure it is cooked perfect.

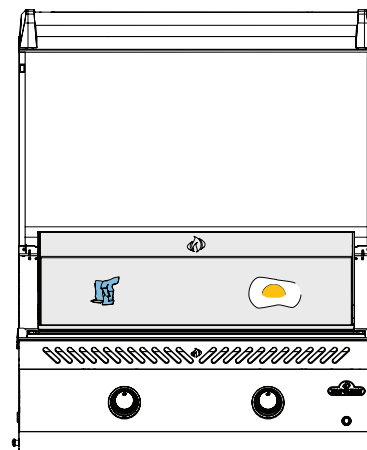


Fig. 1

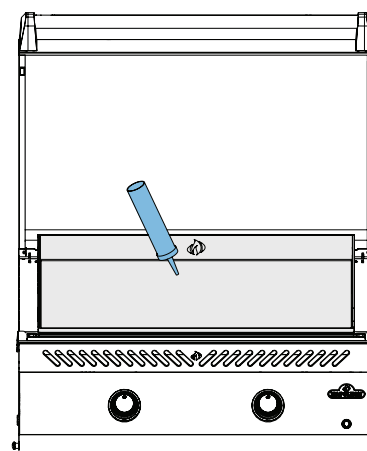


Fig. 2

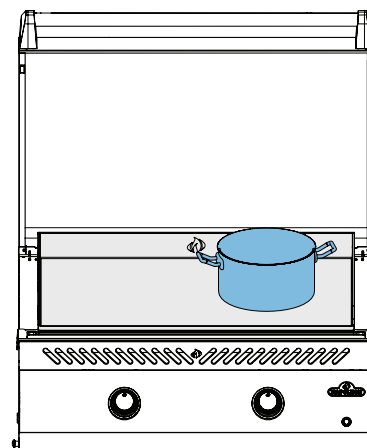


Fig. 3

**WARNING!** Never close the lid of the appliance when operating or hot. Let the appliance cool completely before closing the lid.

**WARNING!** Regularly clean grease out of the entire appliance to avoid build-up and grease fires.

**WARNING!** Do not leave food unattended.



## THE COOKING EXPERIENCE CHECKLIST

Refer to this list every time you cook.

☐ **Read Owner's Manual**

Be sure to have read the owner's manual and all the safety instructions.

☐ **Clean grease tray**

Always ensure you clean the grease tray prior to cooking to avoid fires and flare-ups.

☐ **Check the hose**

Ensure the appliance is off and cool. Check the hose for evidence of excessive abrasions, or cuts. Have the hose replaced before use if the hose is damaged.

☐ **Preheat the appliance**

Preheat your appliance to its lowest setting and apply a small amount of cooking oil to the griddle plate. See **Can You Season a Stainless Steel Griddle?**

**Note:** It is recommended to clean the griddle plate after every use. See **Cleaning Instructions**.

☐ **Prep area**

Make sure everything you need while cooking such as your utensils, seasonings, sauces, and dishes are within your reach. Don't leave your food unattended, or it could burn.

☐ **Leave space**

Leave some space on the griddle and between food, so you have room to move food around if you need to.

☐ **Use a thermometer**

Use a thermometer to ensure food is cooked thoroughly. Follow the appropriate temperatures guidelines for all types of meat, especially poultry.

### COOKING PRO TIP!



Get inspired to create delicious meals from the recipes and cooking techniques at [www.napoleon.com](http://www.napoleon.com) and Napoleon's cookbooks.

### OIL AND FAT SUGGESTION!



- Grape-seed Oil
- Sunflower Oil
- Soybean Oil
- Sesame Oil
- Avocado Oil

If not available, select an oil or fat that has a high smoke point. Do not use salted fats like butter or margarine.






## CAN YOU SEASON A STAINLESS STEEL GRIDDLE?

**Yes! Stainless steel has microscopic pores, seasoning the cooking surface will fill these pores with oil and help prevent food from sticking giving you results like the pros. Here's how to do it:**

1. Wash cooking surface with warm soapy water and a soft cloth. Pat dry and allow griddle plate to completely dry.
2. Preheat appliance to it's lowest setting.
3. Apply a small amount of high smoke point cooking oil to the center of the griddle plate and spread evenly using a spatula or clean cloth. Avoid the corners.
4. Heat to 350°F (176°C) until the oil starts to smoke then turn the griddle OFF and allow it to cool.
5. Once the cooking surface has cooled, wipe off the excess oil.
6. Griddle is now seasoned. Repeat after cleaning.



# Cooking Guide

FOOD	CONTROL KNOB SETTING	COOKING TIME	SUGGESTIONS
 <b>Steak</b> <b>1 inch (2.54 cm) thick</b>	HIGH – 2 minutes each side	Rare – 4 minutes	Ask for marbled fat in cut. Fat is a natural tenderizer and keeps meat juicy.
	HIGH to MEDIUM – High heat 2 minutes each side then turn to medium heat	Medium – 6 minutes	
		Well done – 8 minutes	
 <b>Hamburger</b> <b>½ inch (1.27 cm) thick</b>	HIGH – 2 minutes each side	Rare – 4 minutes	Keep patties all the same thickness for equal cooking times.
	HIGH – 2 ½ minutes each side	Medium – 5 minutes	
	HIGH – 3 minutes each side	Well done – 6 minutes	
 <b>Pork Chops</b>	MEDIUM	6 minutes each side	Choose thick cuts for more tender meat. Trim off excess fat.
 <b>Lamb Chops</b>	HIGH to MEDIUM – High for 5 minutes then Medium until finished	15 minutes each side	Choose thick cuts for more tender meat. Trim off excess fat.
 <b>Hot dogs</b>	MEDIUM to LOW	4 – 6 minutes	Select larger wieners and slit lengthwise before cooking.

## COOKING PRO TIP!

Choose the right kinds of food to cook. Your griddle excels at cooking foods hot and fast. Although you can cook large chunks of meat on a griddle over a low heat, a Napoleon gas or charcoal grill will produce better results.

## DID YOU KNOW?

It's recommended to clean your griddle plate after each use to prevent grease or food particles from hardening on the cooking surface.

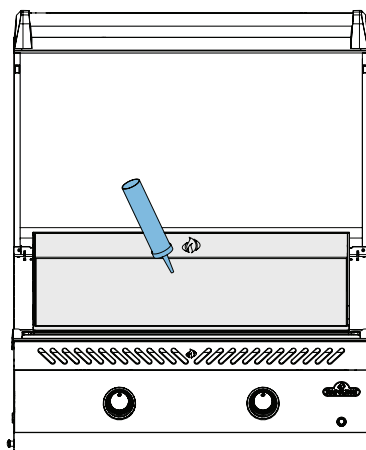
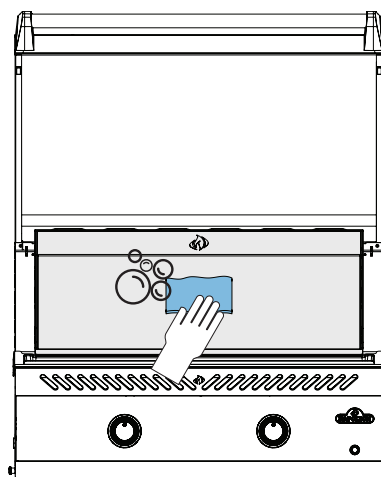
# Cleaning Instructions

## First Time Use

1. Wash the griddle plate by hand with water and mild dish soap to remove any residue from the manufacturing process.
2. Rinse thoroughly with hot water and dry completely with a soft cloth.

## Griddle Plate

- After every use and once cool, thoroughly wipe the plate using a cloth to remove food particles and other cooking residue. Always wipe in the direction of the grain.
- To remove heavy built-up residue, apply warm soapy water with a scouring pad. Special food-safe griddle cleaners may also be suitable. Always wipe in the direction of the grain.
- Thoroughly rinse the griddle plate with water after using any cleaning agents.
- Thoroughly dry the griddle plate with a clean cloth. Coat the plate lightly with your preferred cooking oil. See **Can You Season a Stainless Steel Griddle?**
- Expect the stainless steel griddle plate to permanently discolour from regular use at high cooking temperatures. This is normal and will not affect the performance of the appliance.



### COOKING PRO TIP!

Applying a thin layer of cooking oil to the griddle plate will help prevent delicate foods such as eggs or fish from sticking to the cooking surface.

**WARNING!** Always wear protective gloves and safety glasses when cleaning your appliance.

**WARNING!** Accumulated grease is a fire hazard.

**WARNING!** Cleaning should only be done when the appliance is cool to avoid the possibility of burns.



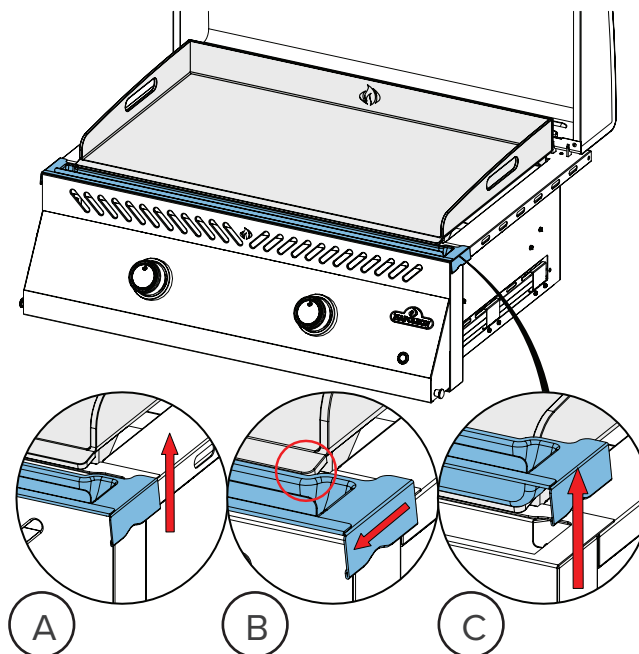
### Drip Tray

Clean the drip tray after each use.

1. Once the appliance has cooled completely, remove the drip tray from the appliance:
  - A. Grip the tray on both sides and lift it slightly up.
  - B. Pull it towards you, just past the edge of the griddle plate.
  - C. Continue to lift and pull up on an angle without tilting it.

**Note:** Tilting the drip tray may cause oil or debris to enter the interior of the appliance.

4. Clean the tray with hot soapy water. If using chemicals, be sure to carefully follow the manufacturer's instructions to avoid damaging the stainless steel.
5. Fully insert the drip tray back into the appliance.



### Control Panel

ONLY use warm soapy water.

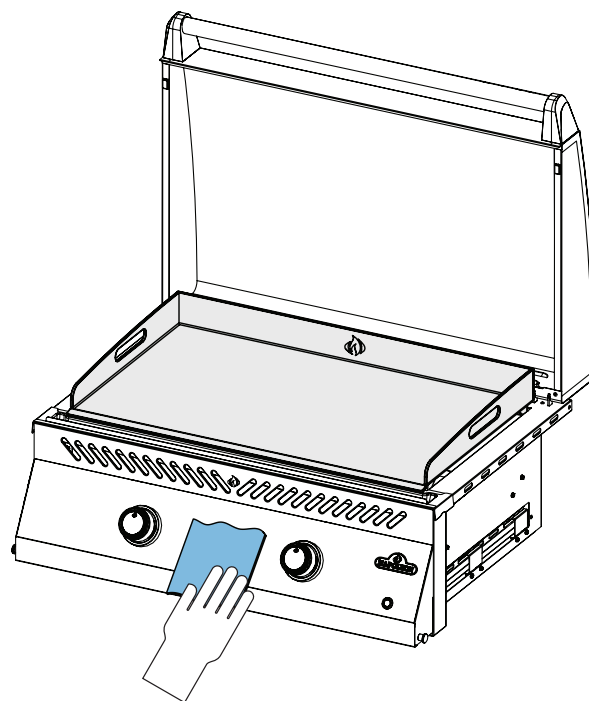
Text is printed directly on the control panel and will gradually rub off if abrasive or stainless steel cleaners are used.

Proper cleaning of the control panel will ensure the text remains dark and legible.

### Outside Appliance Surface

- Only use a non-abrasive cleaner. Abrasive cleaners or steel wool will scratch the finish.
- Always wipe in the direction of the grain.
- Handle porcelain enamel components with care. The baked-on enamel finish is glass-like and will chip if struck.
- Stainless steel parts discolour overtime when heated and will turn a golden or brown hue. This is normal and won't affect the performance of the appliance.

**Note:** Do not use abrasive cleaners or steel wool on any painted, porcelain, or stainless steel parts of your appliance because it will scratch the finish.



**WARNING!** Ensure all burners are turned off and appliance is cool before cleaning. Do not use oven cleaner to clean any part of the appliance. Do not put griddle plates or any other part of the appliance in a self-cleaning oven to clean. Clean the appliance in an area where cleaning solution won't harm decks, lawns, or patios.

**WARNING!** Barbecue sauce and salt can be corrosive and will cause rapid deterioration of the appliance components unless cleaned regularly.



## Insect Screen and Burner Ports

Spiders and insects are attracted to small enclosed spaces.

Napoleon has equipped the burner with an insect screen on the air shutter. This reduces the likelihood of insects building nests inside the burner, but doesn't eliminate the problem.

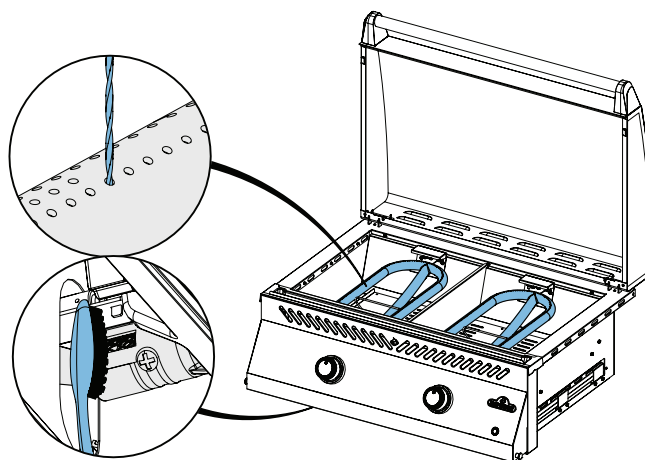
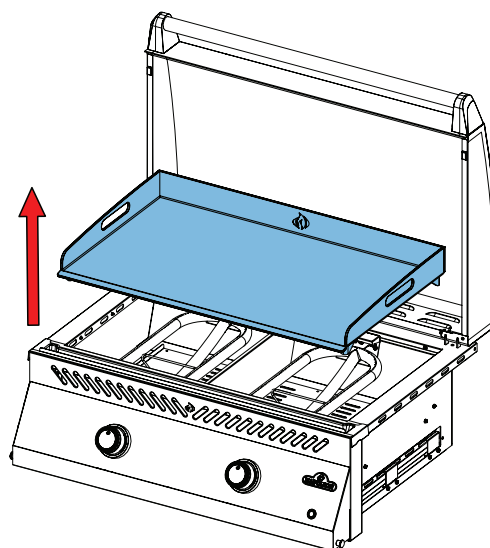
A nest or web can cause the burner flame to burn a soft yellow or orange and cause a fire or backflash at the air shutter underneath the control panel.

1. Remove the griddle plate by lifting it straight up and off.

**CAUTION!** The griddle plate is heavy, it is recommended to do this with two people.



2. Check the burner ports for blockages: burner ports can close over time because of cooking debris and corrosion.
3. Use an opened paper clip, or the supplied port maintenance bit to clean burner ports.
4. Drill out blocked ports using the supplied drill bit in a small cordless drill; this can be done with the burner attached to the appliance.
5. Do not flex the drill bit when drilling the ports because the drill bit will break.
6. This drill bit is for burner ports NOT for brass orifices that regulate the gas flow to the burner.
7. Do not enlarge the holes.
8. Ensure the insect screen is clean, tight, and free of any lint or other debris.



### SAFETY FIRST!



Always wear protective gloves and safety glasses when servicing your appliance.

### WE WANT TO HELP!



Contact the Napoleon Customer Solutions Department for recommended replacement parts.  
+31 345 588655

**WARNING!** It is very important the valve/orifice enters the burner tube when reinstalling the burner after cleaning and before lighting your appliance, or a fire or explosion could occur.

**WARNING!** Avoid unprotected contact with hot surfaces.

**WARNING!** Turn off gas at the source and disconnect the unit before servicing.



# Maintenance Instructions

## Recommendations

This appliance should be thoroughly inspected and serviced annually by a qualified service person.

- Do not obstruct the flow of ventilation and combustion air.
- Keep the cylinder enclosure ventilation openings located on the side of the cart or enclosure and front and back of the bottom shelf clear from debris.

**WARNING!** Keep the appliance away from combustible materials, gasoline, and other flammable vapors and liquids.

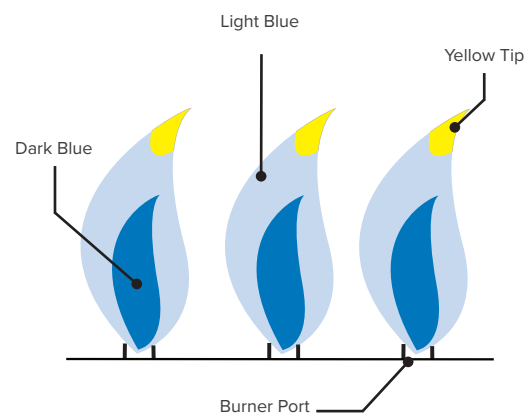


## COMBUSTION IN AIR ADJUSTMENT



**IMPORTANT!** This must be done by a qualified gas installer.

- The air shutter is factory set and should not require adjusting under normal conditions. Adjustments might be required under extreme field conditions.
- The flames of the air shutter will be dark blue, tipped with light blue and occasionally yellow when adjusted correctly.
- Too little air flow to the burner will produce soot and lazy yellow flames.
- Too much air flow to the burner will cause flames to lift erratically and cause igniting difficulties.



## Adjusting the Air Shutter

1. Remove griddle plate. Leave lid open.
2. Loosen air shutter lock screw and open or close air shutter as required.
3. Light the burners on high.
4. Visually inspect burner flames.
5. Turn burners off, tighten locking screws, and replace removed parts when shutters are set correctly.
6. Ensure insect screens are installed.

## TECHNICAL DATA

The following table lists Gross heat input and Gas usage values per unit:

ORIFICE SIZE	GROSS HEAT INPUT (TOTAL)	GAS USAGE (TOTAL)
1.02mm	8 kW	582 g/hr

The following table lists all certified gases and pressures. Verify the information on the rating plate corresponds with this list.

**Note:** Only use regulators that supply the pressure listed here.

Gas Category	3B/P(30)	3+(28-30/37)	3B/P(37)	3B/P(50)
Gases / Pressures	Butane / Propane 30mbar	Butane 28-30mbar Propane 37mbar	Butane / Propane 37mbar	Butane / Propane 50mbar
Countries	LU, NL, DK, FI, SE, CY, CZ, EE, LT, MT, SK, SI, BG, IS, NO, HR, RO, IT, HU, LV, GR	BE, FR, IT, LU, IE, GB, GR, PT, ES, CY, CZ, LT, CH, SI, LV, TR	PL	DE, AT, CH, SK

**CAUTION!** Food particles and grease should not be left on the griddle plate because it attracts rodents which are unsanitary and can chew on wires causing permanent damage to the electrical components.



## STAINLESS IN HARSH ENVIRONMENTS

Stainless steel oxidizes or stains in the presence of chlorides and sulfides, especially in coastal regions, warm and highly humid areas, and around pools and hot tubs. These stains look like rust, but they can be easily removed or prevented. Wash stainless and chrome surfaces every 3-4 weeks. Clean with warm soapy water.

### Burner Maintenance

- Extreme heat and a corrosive environment can cause surface corrosion to occur even though the burner is made from heavy wall 304 stainless steel.



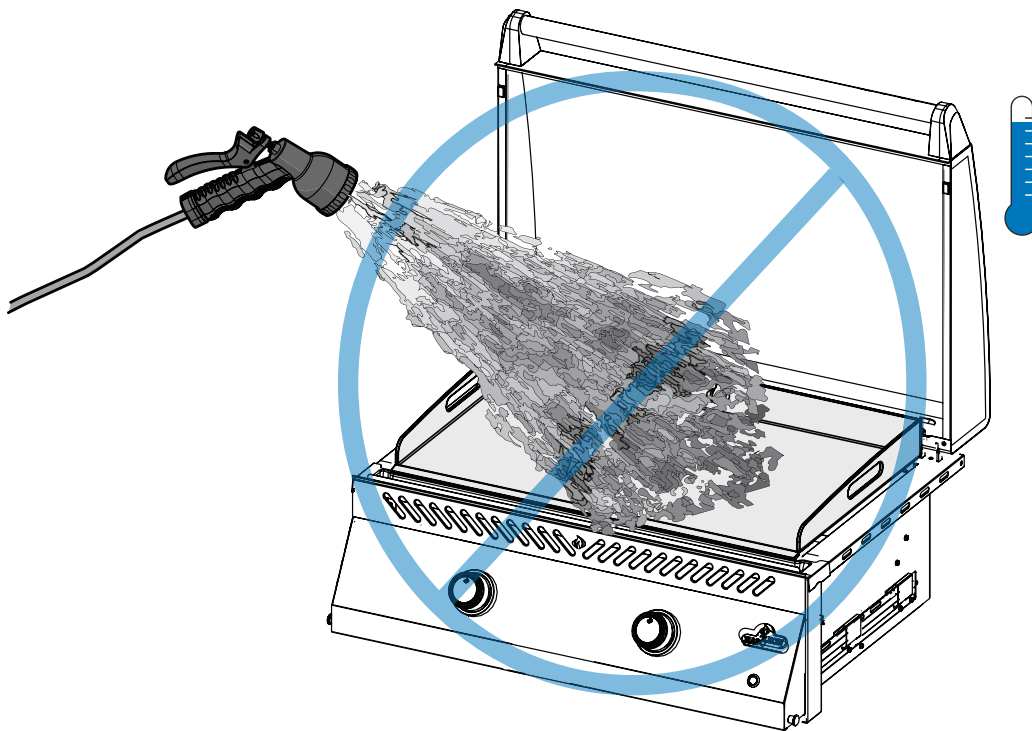
**IMPORTANT!** Damage resulting from by failure to follow these instructions is NOT covered by your appliance warranty.

### Avoid Damaging Hot Griddle Surfaces

- Never flood a hot griddle plate with cold water. This can cause warping or damage.
- Never bang or tap metal tools or cookware on the griddle surface.

### Clearance Ventilation of Hot Air

- Hot air must have a way to escape the appliance for the burners to function properly.
- The burners can become deprived of oxygen if the hot air is not allowed to escape causing them to backflash.



#### SAFETY FIRST!



Never preheat or cook on the appliance with the lid closed.

**WARNING!** Do not use abrasive cleaners or steel wool on any painted, porcelain, or stainless steel parts of your appliance because it will scratch the finish.

**WARNING!** Maintenance should only be done when the appliance is cool to avoid the possibility of burns.

**WARNING!** A leak test must be performed annually and when any component of the gas train is replaced, or when the smell of gas is present.



# Troubleshooting

## Lighting Problems

- Burners will not light with the igniter, but will light with a match.

Possible causes	Solution
Loose electrode wire or switch terminal wires.	Check electrode wire is firmly pushed onto the terminal on the back of the igniter. Check the lead wires from the module to the ignition switch (if equipped) are firmly pushed onto their respective terminals.
Lifting flames on burner.	Close air shutter according to <b>Maintenance Instructions - Combustion Air Adjustment</b> section in this Owner's Manual. <b>IMPORTANT!</b> This must be done by a qualified gas installer.
Burner will not light, knobs blinking.	The knobs will blink until a flame is detected. See <b>Lighting Your Appliance</b> . Check fuel supply.
Burner lit, knobs blinking.	Ensure sensor is contact with flame and that there is no carbon build up on the sensor, clean if required.
Igniter not working, knob lights not working.	Check power supply. In the event of a power outage, the appliance can be lit with a match.

## Noises and Uneven Heat

- Humming regulator.
- Uneven heat.

Possible causes	Solution
Normal humming noise on hot days.	This isn't a defect. It's caused by internal vibrations in the regulator and doesn't affect the performance or safety of the appliance. Humming regulators WILL NOT be replaced.
The cylinder valve was opened too quickly.	Open cylinder valve slowly.
Improper heating.	Preheat appliance with the burners on high for 10 to 15 minutes.

## Illumination Problems

- Control Panel lights not working.

Possible causes	Solution
Appliance is not connected to power.	Plug power cord (from working GFI protected outlet) into electrical box on the back of the appliance. Plug transformer cord into power box.
Blown fuse.	Replace fuse located on outlet line of transformer.
Faulty transformer.	Check transformer output – should be 12VAC. Replace if required.
Terminal on switch or circuit board are corroded or loose.	Clean connections and ensure connectors are pushed together firmly. Access to circuit board is under electrical cover on left side of cabinet.

## Gas Flow

- Low heat or low flame when valve is turned to high.
- Burners burn with yellow flame, accompanied by the smell of gas.
- Flames lift away from burner, accompanied by the smell of gas, and possible lighting difficulties.
- Burner output on HIGH, but setting is LOW. Rumbling noise and fluttering blue flame at burner surface.

Possible causes	Solution
Propane – improper lighting procedure.	Ensure lighting procedure is followed carefully. All gas valves must be in the OFF position when the tank valve is turned on. Turn tank on slowly to allow pressure to equalize. See <b>Operation – Lighting Instructions</b> .
Natural gas – undersized supply line.	Pipe must be sized according to installation code.
Weld failure in the burner housing.	Allow burner to cool and inspect very closely for cracks. Contact your authorized Napoleon dealer to order replacement burner assembly if any cracks are found.
Both gas propane and natural gas – improper preheating.	Preheat appliance with both burners on high for 10 to 15 minutes.
Possible spider web or other debris.	Thoroughly clean nest or webs out of your burner orifice by removing it and following instructions in this manual. See <b>Cleaning Instructions</b> .
Improper air shutter adjustment.	Open or close air shutter slightly according to this manual. See <b>Maintenance Instructions</b> . <b>IMPORTANT!</b> This must be done by a qualified gas installer.
Lack of gas.	Check gas level in propane cylinder.
Supply hose is pinched.	Reposition supply hose as necessary.
Propane regulator in low flow state.	Turn the burners off and close the tank valve, wait 5 minutes before fully re-opening the valve, allow a few seconds for the pressure to equalize before following the Lighting Instructions to start the appliance. Ensure igniting procedure is followed carefully every time you cook. All gas valves must be OFF when the tank valve is turned on. Always open the tank valve slowly.

## Peeling Paint

- Paint appears to be peeling.

Possible causes	Solution
Grease build-up on inside surfaces.	This is not a defect. The finish is stainless steel and will not peel. The peeling is caused by hardened grease, which dries into paint-like shards, that flake off. Regular cleaning will prevent this. See <b>Cleaning Instructions</b> .

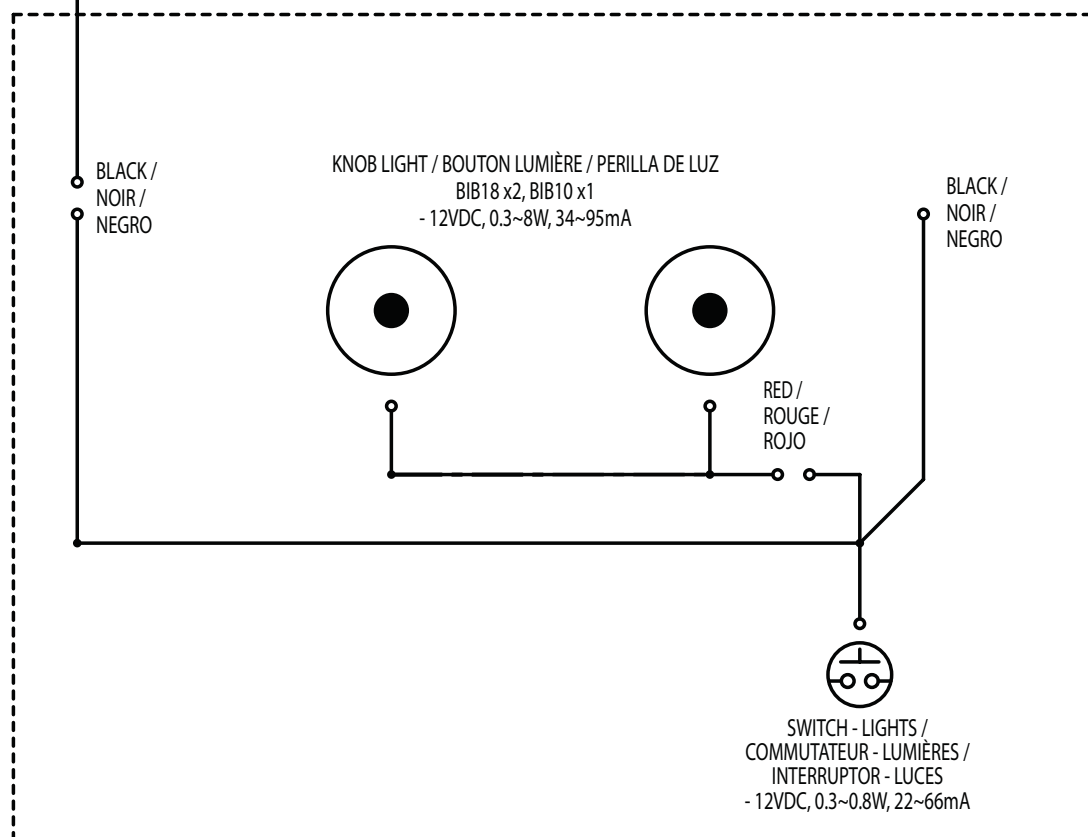
## Crowning

- Griddle plate is uneven in the center.

Possible causes	Solution
Thermal expansion.	It is normal for the stainless steel griddle plate to crown (become slightly uneven) a bit in the center. This is caused by the natural contracting and expansion of the metal and is expected in the thermal expansion process that occurs below the griddle plate.

## DIAGRAM FOR ELECTRICAL CONNECTIONS

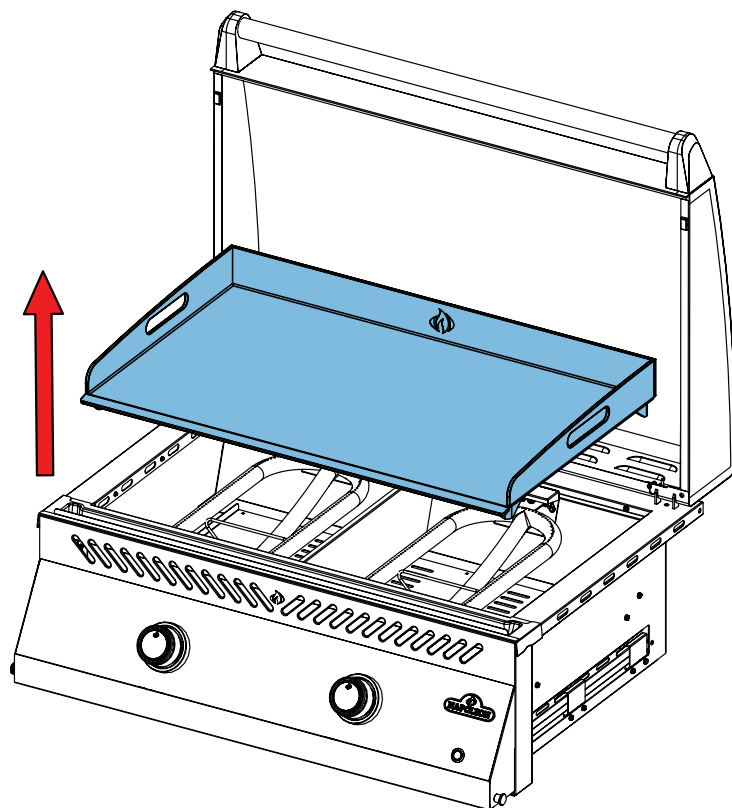
### BIG32FTPSS-XX





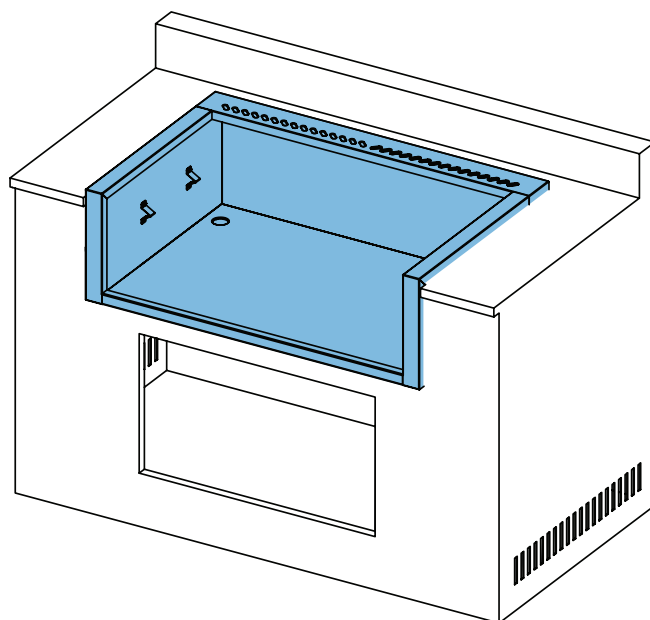
# Assembly Guide

1



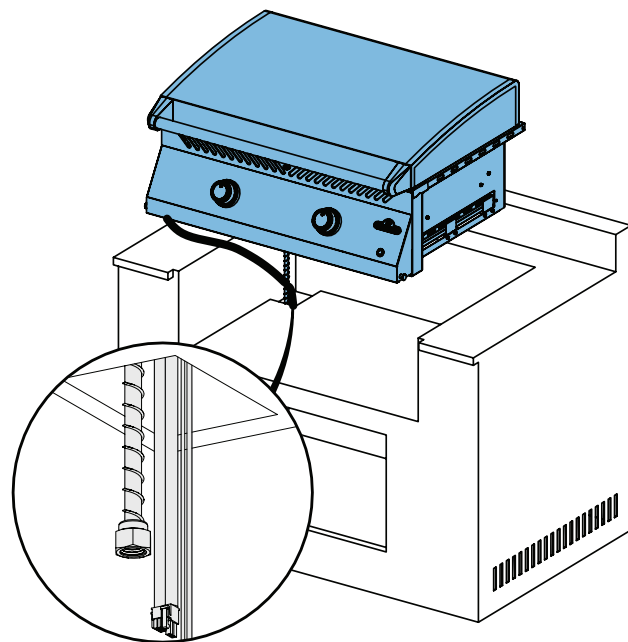
2

Zero clearance liner optional.

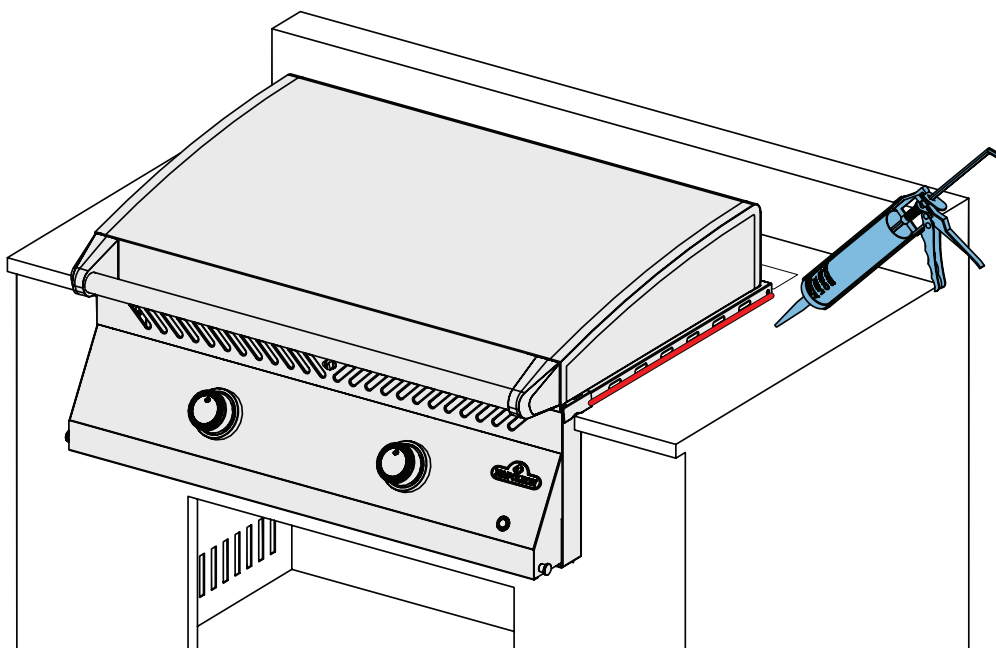




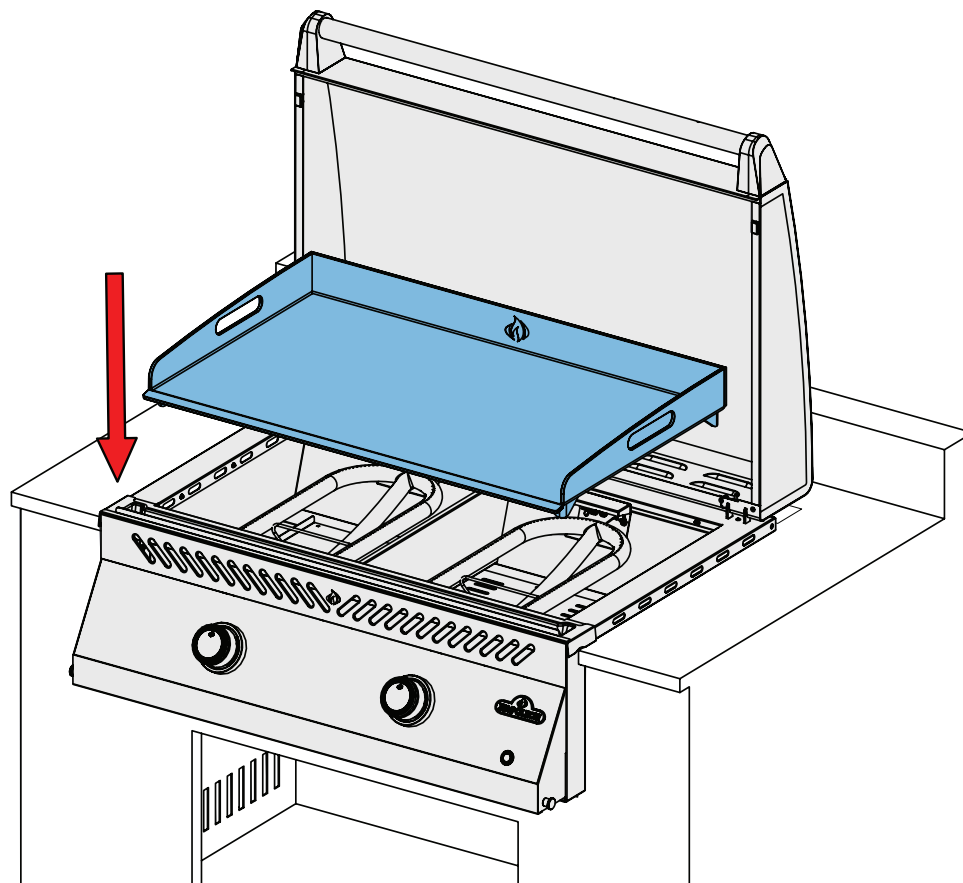
3



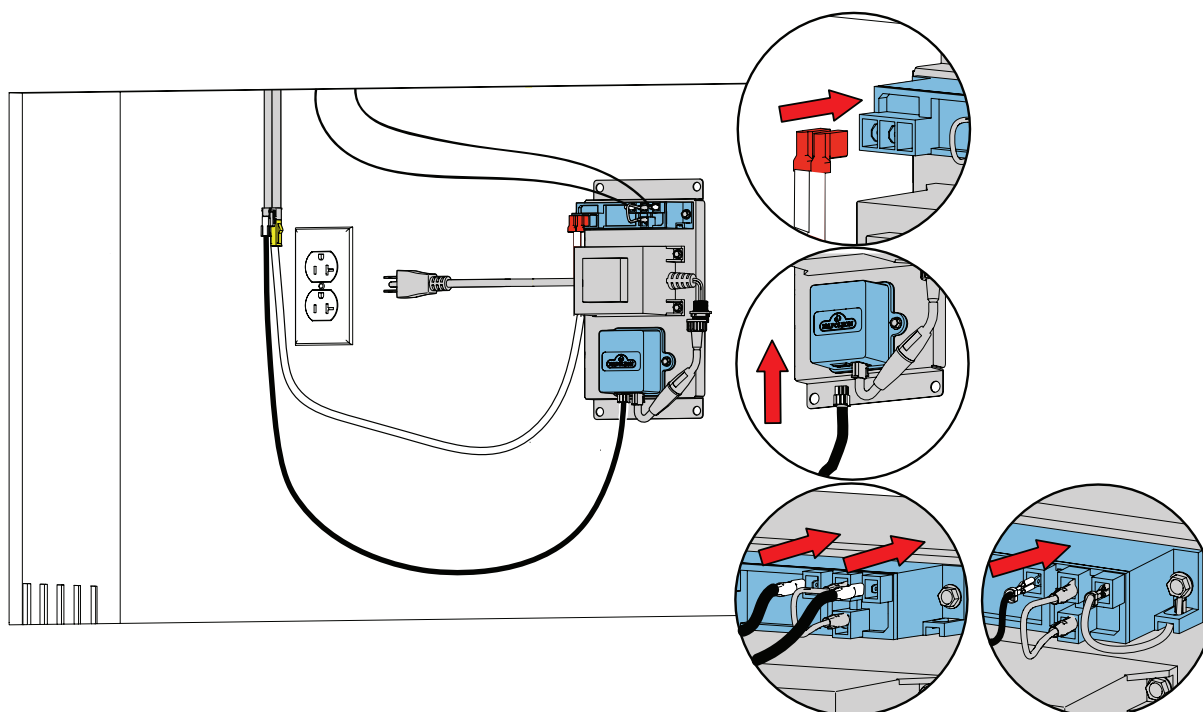
4



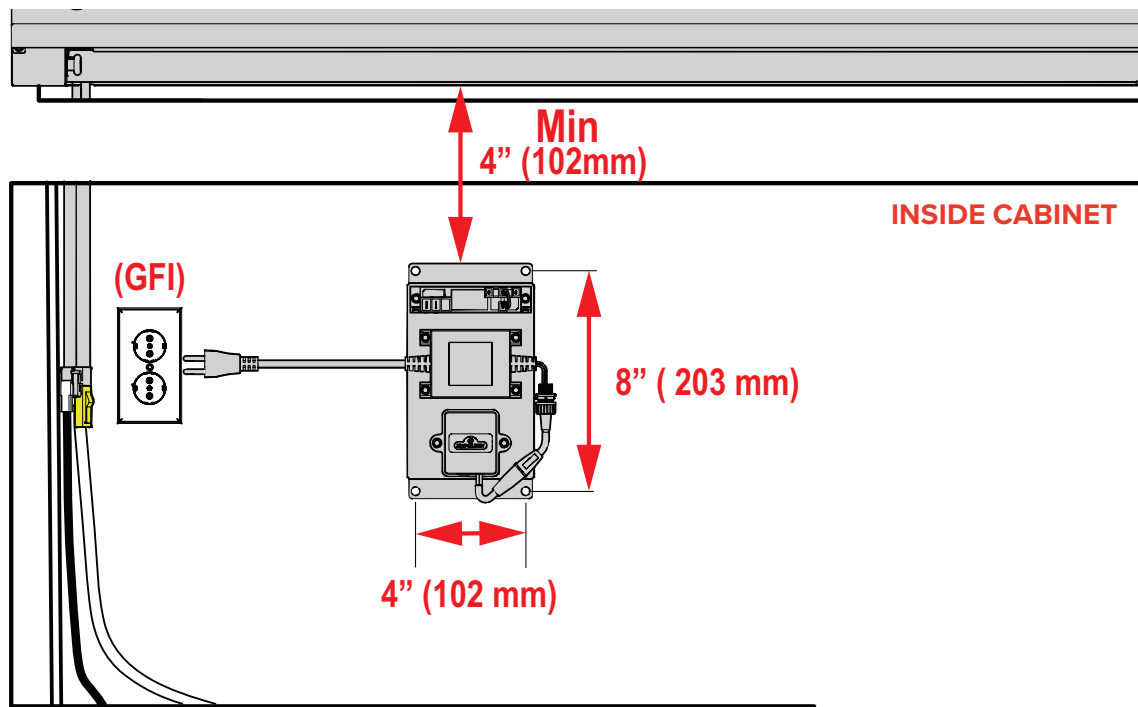
5



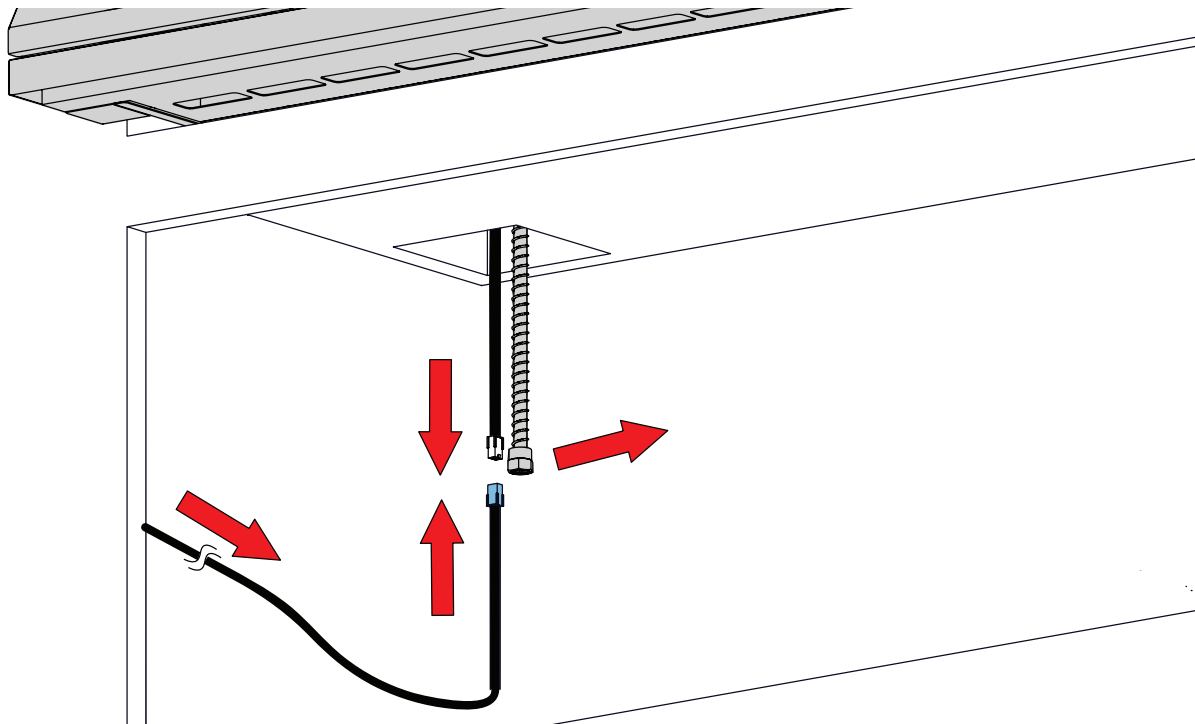
6



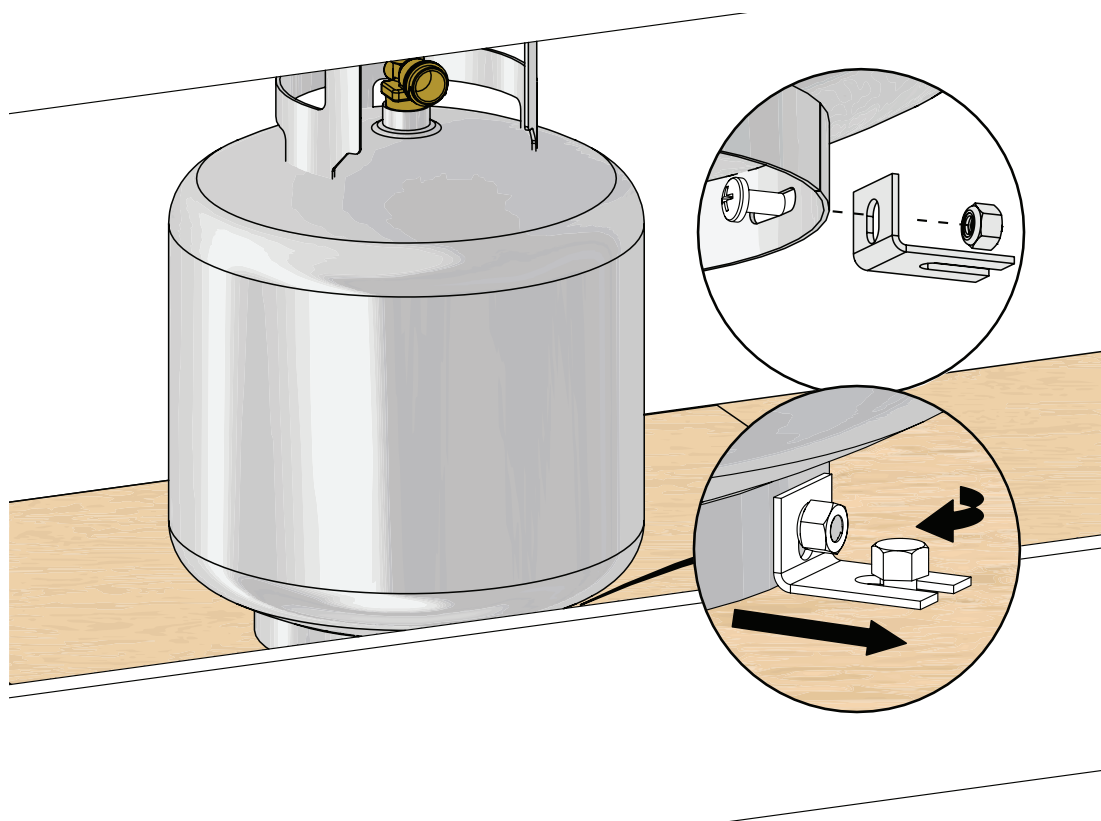
7



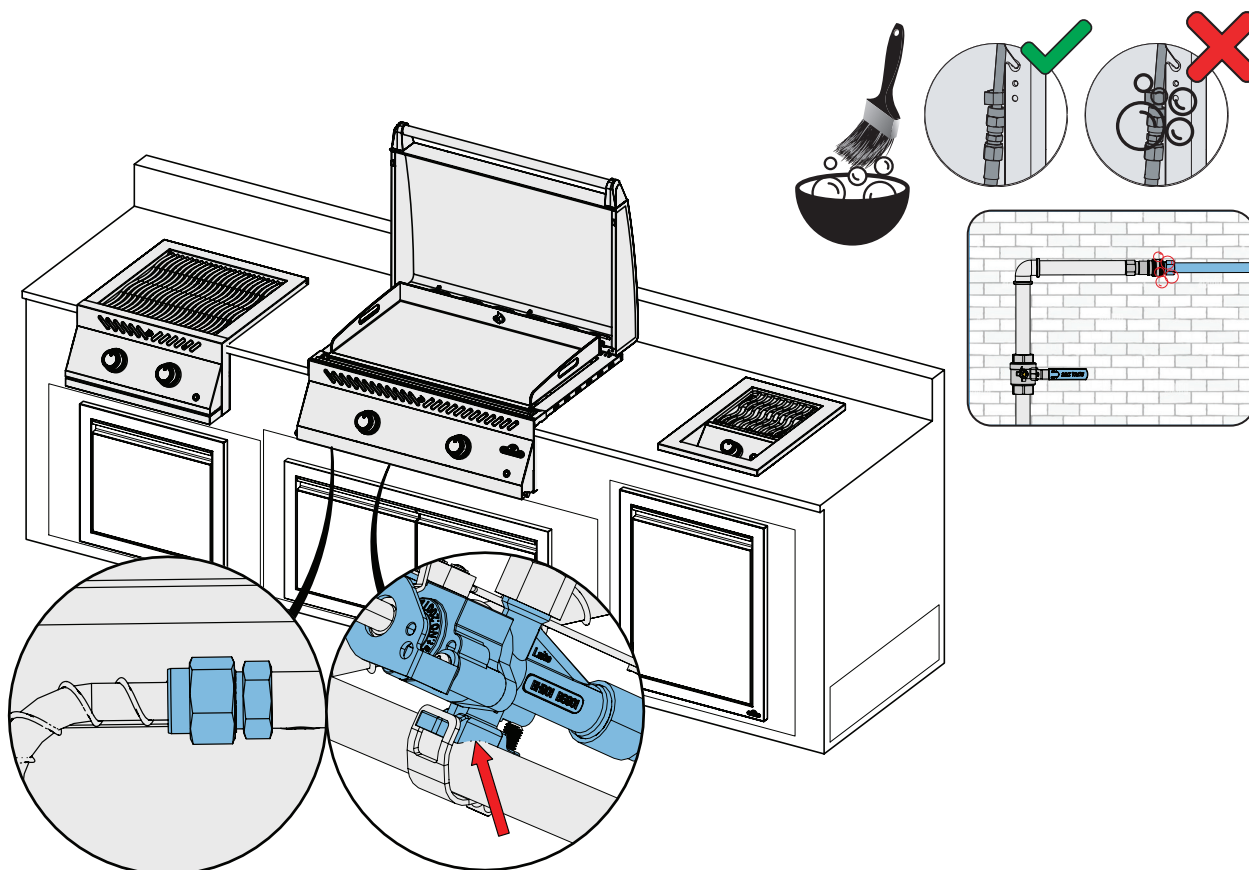
8



9

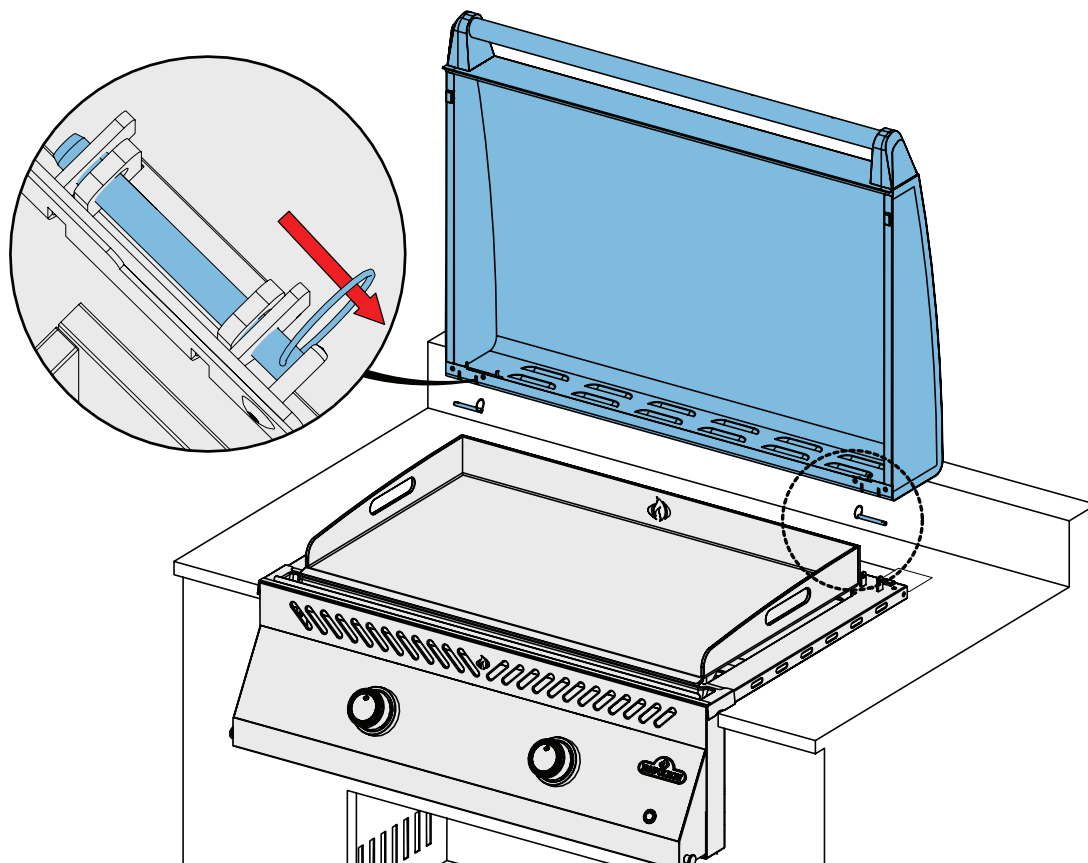


10





11

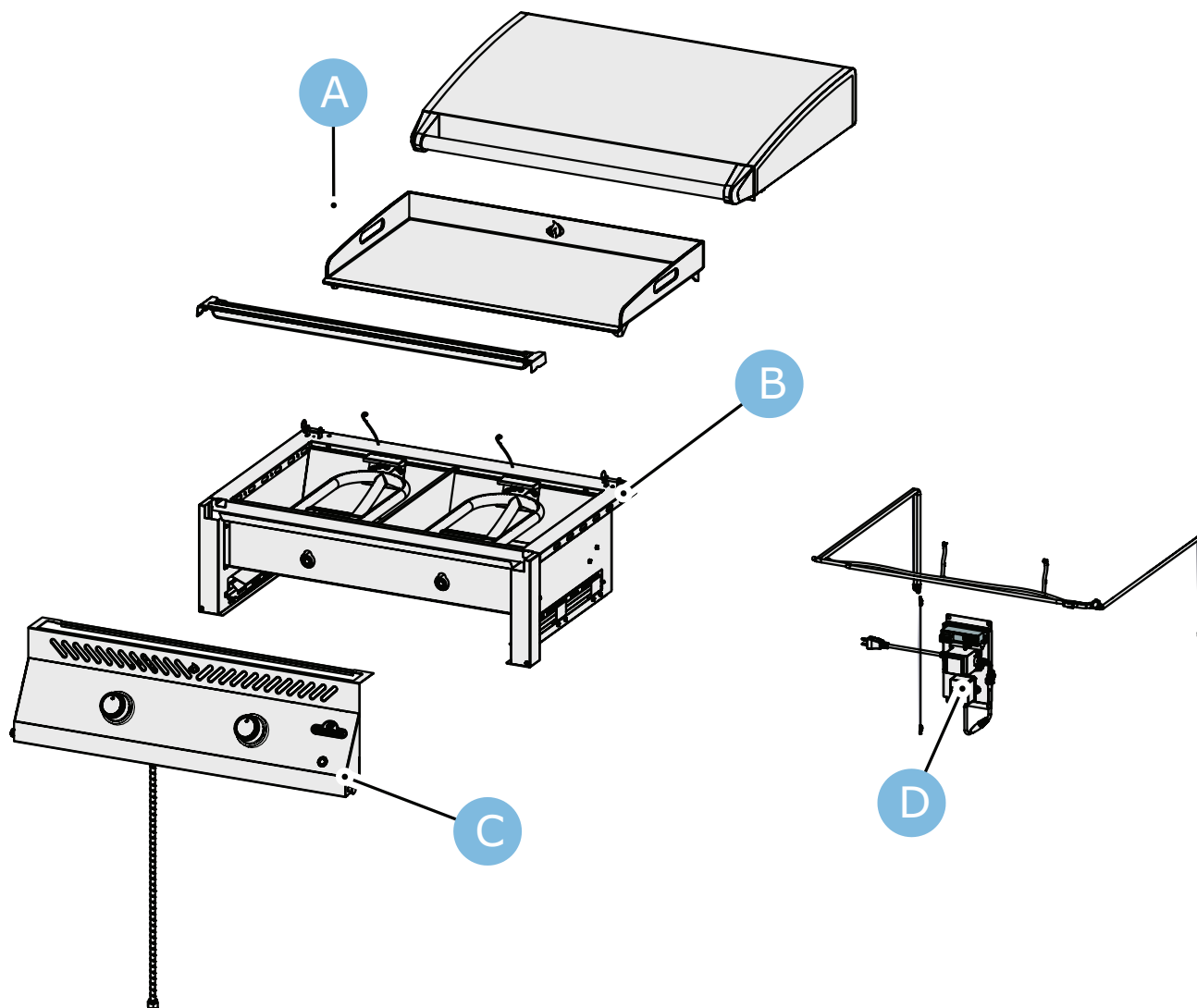


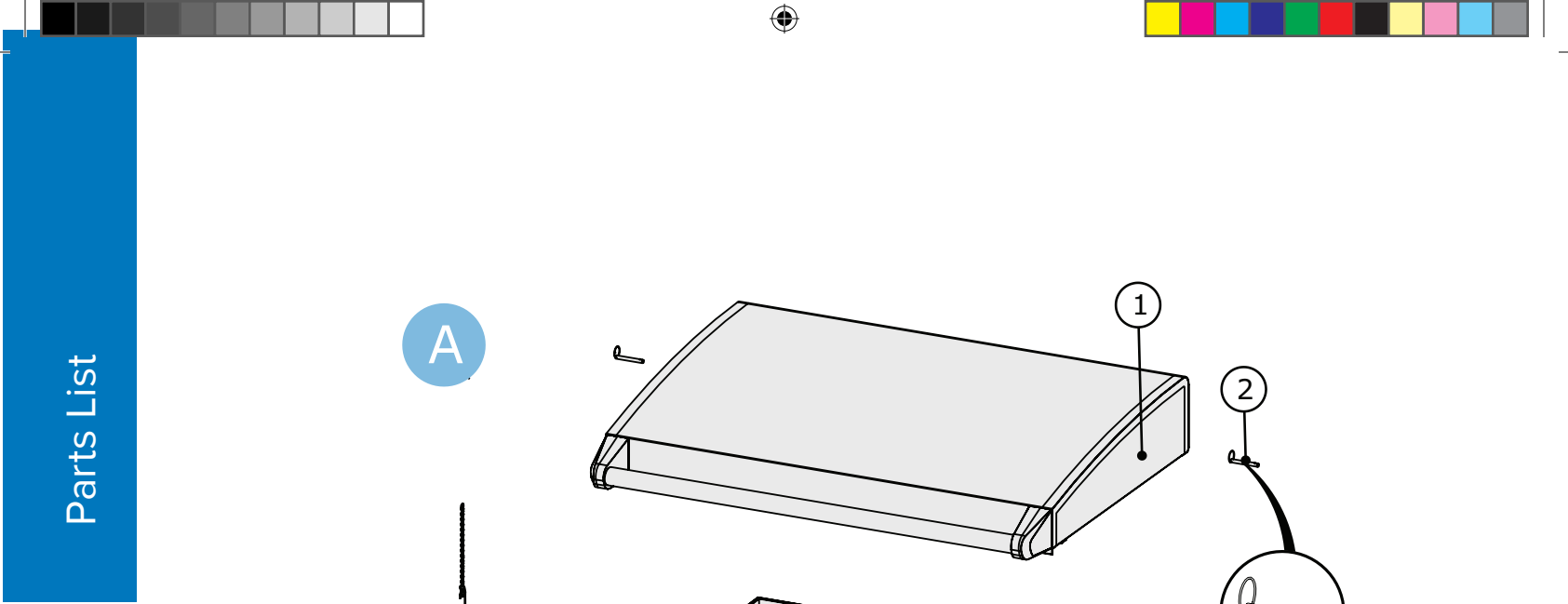
# Replacement Parts

## EXPLODED OVERVIEW

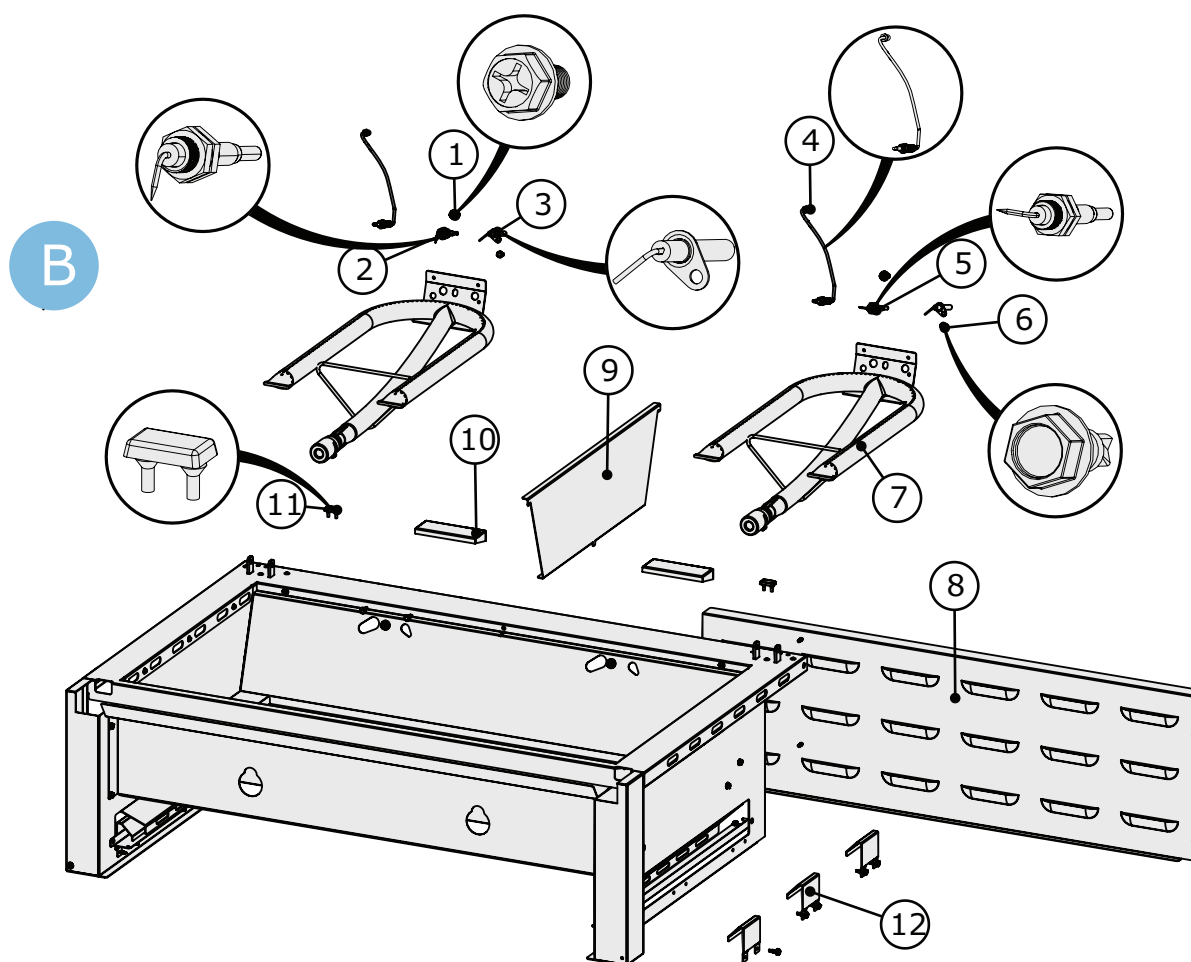
	Description
A	Components
B	Base Assembly
C	Control Panel Assembly
D	Wiring Components

For breakdown of assembly parts, refer to the assembly specific parts lists.

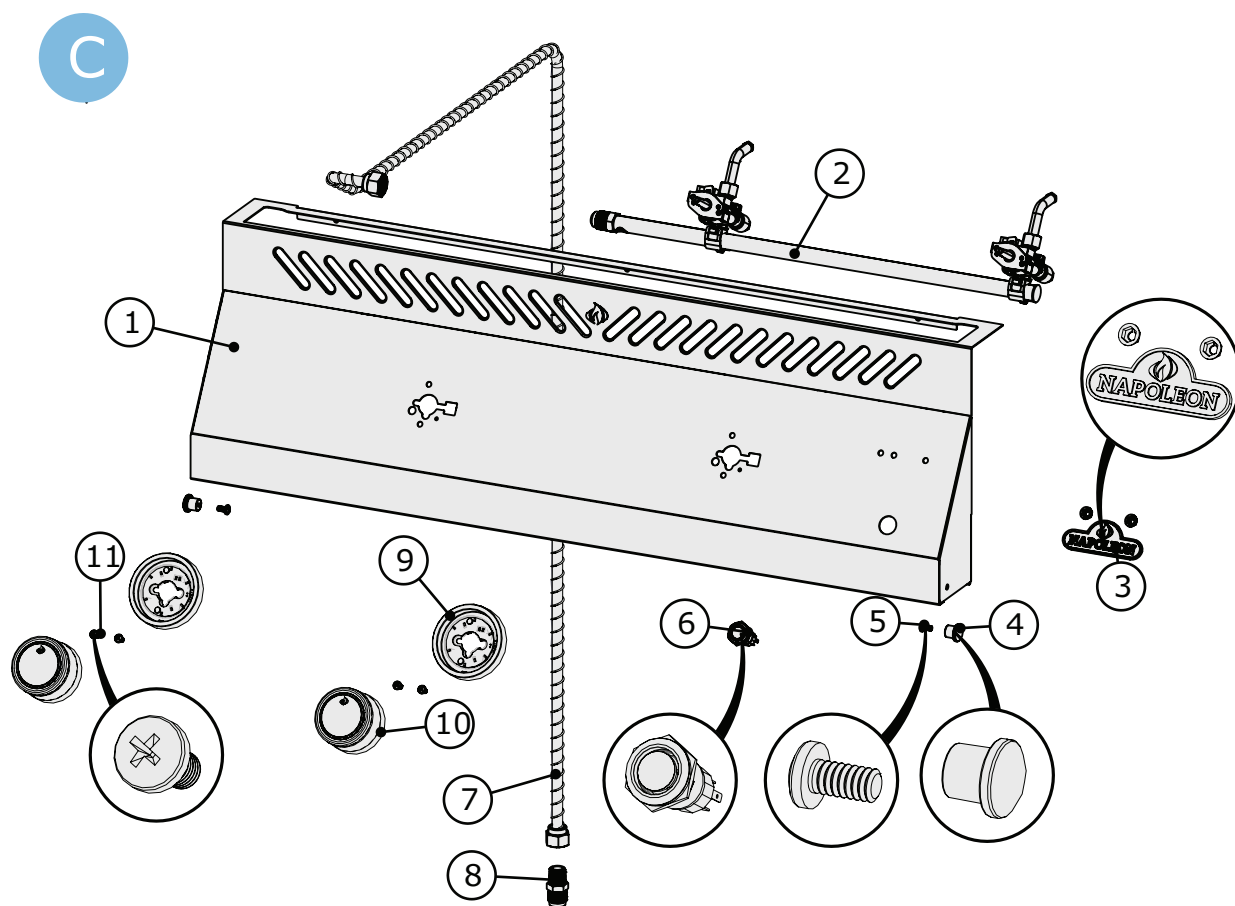




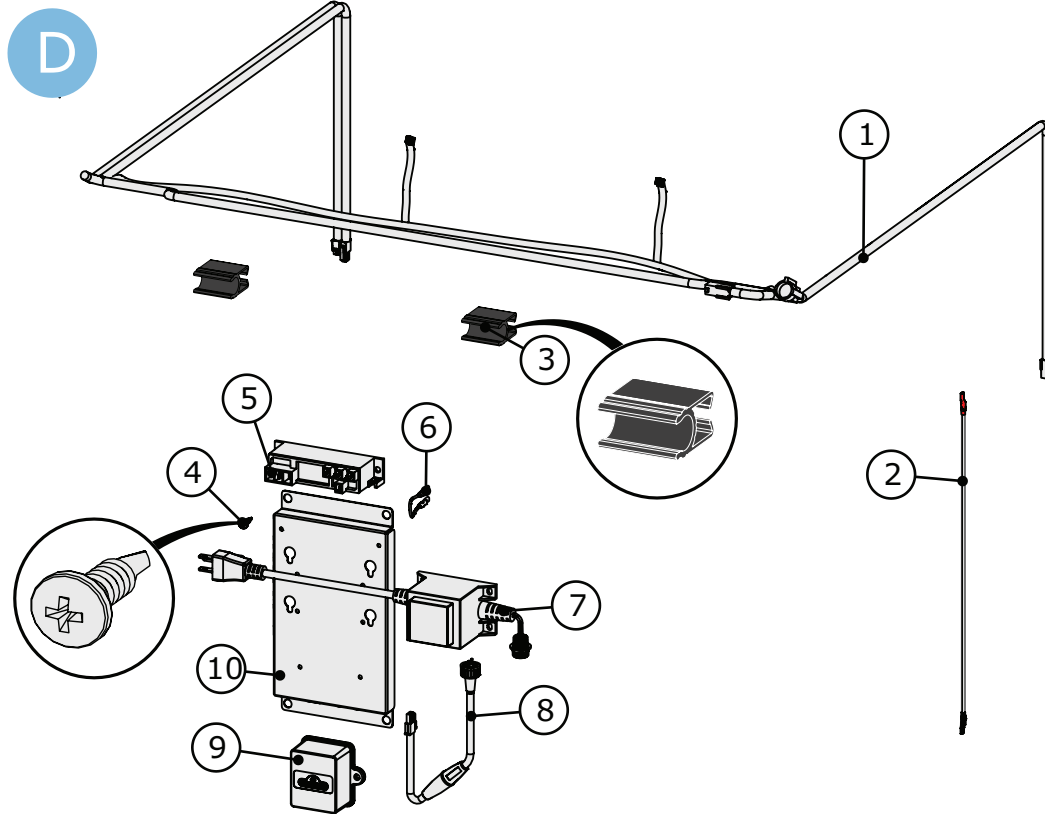
	Part #	Description
A	-	Components
1	Z010-0120-SER	Assembly, Lid
2	Z485-0004	Pin, Clevis Locking
3	Z010-0118	Assembly, Griddle Welded
4	Z710-0006	Drip Tray, Stainless Steel
5	Z555-0010	Rod, Lighting Match, Fixed



	Part #	Description
B	Z010-0117-SER	Base Assembly
1	N570-0038	Screw, 1/4-20 x 1/2 Stainless Steel Hex
2	Z680-0001	Flame Sensor, Left (Red)
3	N240-0032	Igniter Electrode
4	N680-0001	Thermocouple
5	Z680-0002	Flame Sensor, Right (Green)
6	N570-0008	Screw, #8 X 1/2 Hex Head Tek Stainless Steel
7	Z100-0007	Burner, U-Shape Tube
8	Z200-0001	Back Panel
9	Z035-0022	Heat Zone Divider Panel
10	Z350-0001	Housing, Igniter/Sensor
11	N510-0013	Black Silicone Bumper
12	N080-0462	Hose Clamp Bracket



	Part #	Description
<b>C</b>	N010-1790-LP	Control Panel Assembly (Propane)
	N010-1790-NG	Control Panel Assembly (Natural Gas)
<b>1</b>	Z475-0025	Control Panel, Stainless Steel
<b>2</b>	Z010-0119	Manifold (Propane)
	Z010-0121	Manifold (Natural Gas)
<b>3</b>	N385-0513-SER	Logo, Napoleon with Clips
<b>4</b>	Z340-0001	Tool Hook
<b>5</b>	N570-0042	Screw, 10-24 X 3/8 Round Head Philip Stainless Steel
<b>6</b>	N660-0005	Light Switch
<b>7</b>	N720-0094	Flex Tube Stainless Steel 60in X 1/2in
<b>8</b>	N255-0026	Union Fitting 1/2 - 3/8"
<b>9</b>	Z387-0001	LED Bezel, Red/Blue Large
<b>10</b>	N380-0035-CL	Control Knob With Magnet
<b>11</b>	N570-0078	Screw, M4 X 8mm Pan Head Philip Zinc



	Part #	Description
<b>D</b>	Z370-0208-GB	Wiring Components
<b>1*</b>	Z750-0002	Main Wire Harness
<b>2*</b>	N750-0038	Igniter wire 75"
<b>3*</b>	N160-0048	Clip, Control Panel Wires
<b>4</b>	N570-0013	Screw #8 X 5/8 In Pan Head Philip Stainless Steel
<b>5</b>	N357-0022	Igniter, Block 4 Spark 12VAC/D
<b>6</b>	N750-0034	Igniter Jumper Wire
<b>7</b>	N707-0013	Transformer, Lights 230V 4A GB
<b>8</b>	N750-0086	Wire, Transformer Connection
<b>9</b>	Z190-0001	Control Box
<b>10</b>	N475-0532	Panel, Electrical Components

\*Not included in Z370-0208-GB kit.

# NAPOLEON PRODUCT WARRANTY

The present warranty details apply to products purchased after January 1, 2022.

**Refer to your Napoleon Grills Owner's Manual for detailed information on your warranty.**



## FOR PRESTIGE®/PRO™ GRILL CARTS AND BUILT-IN HEADS President's Limited Lifetime Warranty on Napoleon Gas Grills

NAPOLEON warrants that the components of your new NAPOLEON product will be free from defects in materials and workmanship from the date of purchase for a period of:

Aluminum Castings / Stainless Steel Frame.....	Lifetime*
Stainless Steel Lid .....	Lifetime*
Porcelain-Enameled Lid.....	Lifetime*
Stainless Steel Cooking Grids.....	Lifetime*
Stainless Steel Side Table .....	Lifetime*
Stainless Steel Tube Burner .....	10 Years <sup>plus Id</sup>
Porcelain-Coated Cast Iron Cooking Grids .....	10 Years <sup>plus Id</sup>
Stainless Steel Flame Arrester Inserts.....	5 Years <sup>plus Id</sup>
Stainless Steel Infrared Burner for Rotisserie .....	5 Years <sup>plus Id</sup>
Bottom Ceramic Infrared Burner or Ceramic Infrared Side Burner (excluding screen) .....	5 Years <sup>plus Id</sup>
Ceramic Infrared Burner for Rotisserie (excluding mesh).....	5 Years <sup>plus Id</sup>
All Other Parts .....	2 Years

**Plus Id:** refers to an extended warranty period, during which we supply spare parts to the purchaser at 50% of the current retail price for the lifetime\* of the grill.

**Plus 15:** refers to an extended warranty period, during which we supply spare parts to the purchaser at 50% of the current retail price for an additional 15 years.

**Plus 10:** refers to an extended warranty period, during which we supply spare part to the purchaser at 50% of the current retail price for an additional 10 years.

**\*Lifetime:** refers to a warranty period of 30 years.

**This warranty is valid in:** the European Union, Switzerland, Andorra, San Marino, Norway, Iceland and Liechtenstein.

The customer's legal entitlements in the event of defects in accordance with WKRL - (EU) 2019/711) are not affected, restricted or altered by the present warranty. The exercise of statutory entitlements is to take place free of charge.

### WARRANTY CONDITIONS AND LIMITATIONS

NAPOLEON guarantees that its products are free from defects exclusively to the original purchaser, and only insofar as the purchase took place through an official NAPOLEON dealer. The following conditions and restrictions apply:

The present manufacturer's warranty is not transferable nor viable for extension under any circumstances or by any of our representatives.

The gas grill must be installed by a licensed, authorized service technician or contractor. Installation must take place in accordance with the installation instructions provided, as well as all local and national building and fire codes.

This limited warranty does not cover damage caused by improper operation, lack of maintenance, grease fire, environmental exposure, accidents, modification, abuse, or neglect. The installation of spare parts from other manufacturers voids the present warranty. The discoloration of plastic elements due to the application of chemical cleaning agents or exposure to sunlight is not covered under this warranty.

This warranty also excludes any of the following: Scratches, dents, paint defects, coatings, corrosion or discoloration caused by exposure to heat or abrasive and chemical cleaners, as well as chips to porcelain-coated parts and any components used in the installation of the gas grill.

If a part deteriorates to the point where it becomes inoperable (due to rusting or burning through) within the warranty period, the customer will be issued with a replacement part.

After the first year, NAPOLEON has the authority under this warranty (President's Limited Lifetime Warranty, 15 Year Limited Warranty, 10 Year Limited Warranty, 3 Year Limited Warranty) to waive any warranty obligation at its free discretion by refunding the original purchaser to the tune of the wholesale price of the relevant defective warranty parts.

NAPOLEON accepts no responsibility for any installation, labor hours or other costs or expenses associated with the reinstallation of a warranty part. Costs of this nature are not covered by the present warranty.

Notwithstanding any regulations under this warranty (President's Limited Lifetime Warranty, 15 Year Limited Warranty, 10 Year Limited Warranty, 3 Year Limited Warranty), NAPOLEON's liability under this warranty is defined by the foregoing, and does not cover any incidental, consequential, or indirect damage in any case whatsoever.

This warranty defines NAPOLEON's duties and liability with respect to the NAPOLEON gas grill. NAPOLEON assumes no further liability in connection with the sale of this product, nor does it authorize any third party to assume any other liability on its behalf.

NAPOLEON assumes no responsibility for: Overheating, extinguishing of the flame by environmental factors such as strong winds or inadequate ventilation.

NAPOLEON does not accept liability for any damage to the gas grill caused by the weather, hail, rough handling, aggressive chemicals or cleaning agents.

Warranty claims must be accompanied by the proof of purchase or a copy thereof stating the serial and model number.

NAPOLEON reserves the right to have the product or any part thereof inspected by one of its representatives prior to the fulfilment of any warranty obligation.

NAPOLEON does not bear shipping costs, labor hours or export duties.

#### **GUARANTOR:**

NAPOLEON EUROPE | WOLF STEEL EUROPE B.V.  
De Riemsdijk 22 | 4004LC | Tiel | Gelderland Netherlands

**Phone:** +31 345 588 655

**Fax:** +31 345 588 655

**E-mail:** [de.info@napoleon.com](mailto:de.info@napoleon.com)

# NAPOLEON - CELEBRATING OVER 40 YEARS OF HOME COMFORT PRODUCTS



Napoleon products are protected  
by one or more U.S. and Canadian  
and/or foreign patents or patents  
pending.

De Riemsdijk 22, 4004 LC, Tiel, The Netherlands  
10-12 Home Farm, Meriden Road, Berkswell, CV7 7SL, United Kingdom  
24 Napoleon Road, Barrie, Ontario, L4M 0G8, Canada

PHONE: +31 345 588655  
[www.napoleon.com](http://www.napoleon.com)  
[eu.info@napoleon.com](mailto:eu.info@napoleon.com)



N415-0804CE-GB