

California Outdoor Concepts, Inc.
17671 Irvine Blvd., Suite 108
Tustin, CA 92780
Telephone 877-274-6773
Fax 877-274-0017



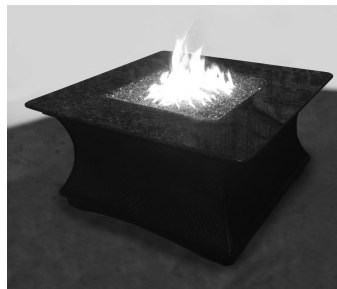
Monterey, Tradewinds
Elegant, Carmel
Del Mar, Palm
San Simeon,
Water Features,
Solano, La Costa

OWNER'S MANUAL

OUTDOOR LIVING REDEFINED™

SAFE AND BEAUTIFUL OUTDOOR FIREPIT
FOR PROPANE AND *NATURAL GAS

Report # 516-O-02-4



Installer: Leave This Manual with Consumer
Consumer: Save this Manual for Future Reference

CODE AND SUPPLY REQUIREMENTS: This **Outdoor Fire Pit** must be installed in accordance with local codes and ordinances, or in the absence of local codes, with the latest National Fuel Gas Code. ANSI Z223.1. **When an appliance is for connection to a fixed piping system, the installation must conform with local codes, or in the absence of local codes, the National fuel Gas Code, ANSI Z223.1/NFPA 54, or International Fuel Gas Code.**



WARNING: improper installation, adjustment, alteration, service or maintenance can cause injury or property damage. Read the installation, operating and maintenance instructions thoroughly before installing or service this equipment.



WARNING:
For Outdoor Use Only.



DANGER

IF YOU SMELL GAS:

1. Shut off the gas to the appliance.
2. Extinguish any open flame.
3. If odor continues, keep away from the appliance and immediately call your gas supplier or fire department.



WARNING

Do not store or use gasoline or other flammable vapors and liquids in the vicinity of this or any other appliance.

An LP-cylinder not connected for use shall not be stored in the vicinity of this or any other appliance.



DANGER



CARBON MONOXIDE HAZARD

This appliance can produce carbon monoxide which has no odor.

Using it in an enclosed space can kill you.

Never use this appliance in an enclosed space such as a camper, tent, car or home.

California Outdoor Concepts – TABLE OF CONTENTS

Cover – Important Safety Information.....	1
Table of Contents.....	2
Important Safety Information	
Minimum Clearances to Combustibles.....	2
Pre-Installation & Preparation Guidelines.....	3
Installation Information	
Connecting the Gas to the Campfire.....	4
Lava Granules and Logs Parts List.....	4
Lava Granule & Log Placement.....	5
Arctic Flame Glass.....	6
Operating Instructions.....	7
Lighting Instructions.....	7
Operating Information.....	8
Converting your Fire pit to a Different Gas Type.....	9

This fireplace is tested by OMNI-Test Laboratories, Portland Oregon and complies with: ANSI Z21.97-2012/CSA 2.41-2012 “Standard for Outdoor Decorative Gas Appliances.”

IMPORTANT SAFETY INFORMATION

READ THESE INSTRUCTIONS FULLY BEFORE INSTALLING THIS OUTDOOR FIREPIT. If not installed and used correctly per these instructions, this product can cause serious injury.

**CAUTION: INSTALLATION, MODIFICATION AND REPAIR MUST BE DONE BY
A QUALIFIED, PROFESSIONAL INSTALLER.**

Be sure you understand all safety precautions and warnings contained in this manual.

1. CHECK STATE AND LOCAL CODES TO DETERMINE IF THE OUTDOOR FIREPIT IS PERMITTED IN YOUR LOCALITY BEFORE INSTALLATION.
2. **FOR OUTDOOR USE ONLY.** THIS UNIT MUST BE INSTALLED AT LEAST 60" FROM CENTER OF BURNER TO ANY COMBUSTIBLE WALLS OR MATERIAL. IT MUST NOT BE INSTALLED UNDER ANY TYPE OF CEILING OR OVERHANG.
3. When shutting the unit down—be sure to TURN THE KEY VALVE FULLY OFF.
4. **WARNING: CARBON MONOXIDE POISONING MAY LEAD TO DEATH. DO NOT MODIFY THIS OUTDOOR FIREPIT OR ITS CONTROLS, EXCEPT AS PROVIDED FOR IN THIS MANUAL.**

Any other change may be dangerous. Improper installation or use of your outdoor firepit can cause serious injury or death from fire, burns, explosions or carbon monoxide poisoning.

MINIMUM CLEARANCE TO COMBUSTIBLES

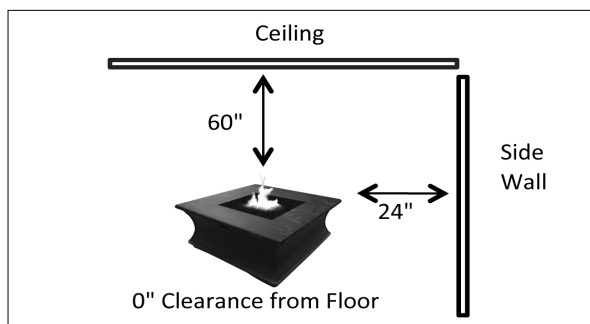


Figure 1

The dimensions shown in Figure 1 are **MINIMUM CLEARANCES** to maintain when you install this outdoor firepit. **THERE MUST BE AT LEAST 24" of clearance from the side wall, 60" of clearance from the ceiling, and 0" of clearance from the floor.**

IMPORTANT SAFETY INFORMATION

-INSTALLATION AND PREPARATION SAFETY GUIDELINES

1. Before installing this outdoor firepit, check “Minimum Clearance to Combustibles” on page 2. **MINIMUM CLEARANCES** must be maintained when you install this outdoor firepit. **THERE MUST BE AT LEAST 24”** from the side of appliance to any combustible materials.
2. The outdoor firepit is for **outdoor** use only. **DO NOT** install or use this appliance inside a building, garage, or any other enclosed area including recreational vehicles and/or boats. **This unit must be installed in such a manner that proper air ventilation is maintained without obstruction. At all times, and during all weather conditions.**
3. **CHECK GAS TYPE** (natural gas or propane): The gas supply you intend to use may not be the same as that stated on your outdoor firepit rating plate. **THIS FIREPIT IS CONSTRUCTED FOR USE WITH PROPANE GAS.** If the gas supply is different, or if **you wish to change to natural gas, you MUST have the firepit converted (method described on page 8) to the gas type you intend to use, by a qualified, professional installer.** If you are unsure, contact your dealer for assistance.
4. **DO NOT USE IF GAS PRESSURE IS LOWER THAN THE MINIMUM REQUIREMENT OR EXCEEDS THE MAXIMUM.**
5. **FOR NATURAL GAS:** The minimum inlet gas supply pressure for purposes of input adjustment is **5 inches** water column and maximum inlet gas supply pressure is **10 inches** water column. **FOR PROPANE:** The minimum inlet gas supply pressure for purposes of input adjustment is **8 inches** water column and the maximum inlet gas supply pressure is **13 inches** water column.
6. Gas piping system must be sized to provide minimum inlet pressure at the maximum flow rate (BTU/hr). Undue pressure loss will occur if the pipe is too small or the run is too long
7. For installations at elevations above 2,000 ft., contact your local dealer or gas supplier before installing as input ratings should be reduced approximately 4% for each 1,000 ft. above sea level. Refer to the National Fuel Gas Code. **Contact the factory for the required orifice.**
8. The outdoor firepit and its main gas valve must be disconnected from the gas supply piping system during any pressure testing of that system at test pressures in excess of ½ psig. This is accomplished by closing the gas supply line valve, as required by NFPA 54, section 5-54.
9. The outdoor firepit must be isolated from the gas supply piping system by closing its equipment shut-off valve during any pressure testing of the gas supply piping system at test pressures equal to or less than ½ psig.
10. **INSTALLER NOTE:** This unit should be installed so that it can be removed at a later date for service.
11. **GAS SUPPLY PLUMBING REQUIREMENTS** Apply only joint compounds that are resistant to all gasses on all male pipe fittings.
12. **DO NOT BURN SOLID FUELS OF ANY KIND IN THIS APPLIANCE.**

SAFETY NOTE: An external on/off valve in the gas line is required for safety when your Outdoor Firepit is not in use. It also provides for convenient maintenance and repair.

INSTALLATION INFORMATION CONNECTING THE GAS TO THE FIREPIT

I M P O R T A N T

BEFORE PROCEEDING, CAREFULLY READ ALL OF THE IMPORTANT SAFETY INFORMATION CONTAINED IN THIS OWNER'S MANUAL, INCLUDING:

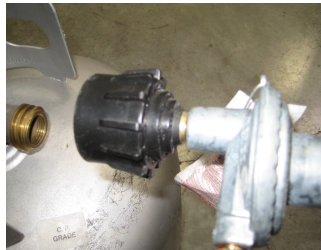
- A. Pre-Installation and Outdoor Firepit Preparation Safety Guidelines (page 3).
- B. Log installation Guidelines (page 4).
- C. Minimum Clearance to Combustibles (page 2).
- D. Examine your burner, if damage is evident replace only with a California Outdoor Concepts burner.

Cylinder Specifications:

20 lb (9.1 kg) propane cylinder constructed and marked in accordance with the *U.S. D.O.T. Specifications for L/P- Gas Cylinders*, or the *Standard for Cylinders, Spheres and Tube for Transportation of Dangerous Goods and Commission, CAN/CSA B399*.

BEFORE INSTALLATION, BE SURE THE PROPANE TANK IS TURNED OFF.

- To connect to the propane gas tank, attach the black hose (with regulator) and tighten down the connector (see photos below). Follow all instructions and safety warnings supplied with the propane tank.
- Propane cylinder must have a listed over-filling protection device.
- Turn on the gas to the burner system and test for leaks with soapy water solution.
- **(Never use an open flame for testing). If a leak is found, tighten the connector until no leaks are detected.**
- The hose should be inspected before each use of the appliance.
- The hose assembly must be replaced prior to the appliance being put into operation if there is evidence of excessive abrasion or wear, or if the hose is damaged. The replacement hose shall be that specified by the manufacturer. **Do Not Use Any Substitute Materials With This Appliance.**
- Properly locate the gas hose out of pathways where people may trip over it or in areas where the hose may be subject to accidental damage.



TO GAIN ACCESS TO PROPANE CYLINDER:

1. Locate access door on appliance.



2. Use handle to pull door open, disconnecting magnetic latch.



BURNER MEDIA INSTALLATION

- A. Carefully inspect the burner and log cartons for shipping damage. If any parts are missing or damaged, call your dealer. **Do not attempt** to install the appliance unless all parts are in good condition.
- B. Correct installation is crucial to safe performance of your Outdoor Fire Pit.
- C. Due to high temperatures, the Fire must be located out of traffic areas and away from combustibles.

LAVA GRANULES & LOG PARTS LIST

Replacement parts available from your local retailer.

LAVA AND LOG BURNER MEDIA



LAVA GRANULE & LOG PLACEMENT

1. Pour the two bags of lava granules into the Outdoor Firepit so that it completely covers the burner.
(See figures #1 and #2)
2. Place the largest log diagonally centered over the burner. (See figure #3)
3. Place the other logs as desired using the first log (figure #3) as a support to lean the other logs against.
(See figure #4)



FIGURE 1



FIGURE 2



FIGURE 3



FIGURE 4

CAUTION:
BURN HAZARD. LOGS WILL REMAIN HOT FOR SOME TIME AFTER USE.
YOU MUST MAINTAIN THE LOG LAYOUT AS SHOWN TO ENSURE PROPER OPERATION OF
YOUR LOG SET. IF YOU NEED TO REPOSITION ANY LOG TO MAINTAIN THE PROPER LAYOUT,
USE HEAT RESISTANT GLOVES OR ALLOW LOGS ADEQUATE TIME TO COOL BEFORE
HANDLING.

Glass Burner Media



ARCTIC FLAME GLASS

1. Pour the bag(s) of ARCTIC FLAME GLASS into the Outdoor Firepit so that it completely covers the burner. (See figures #1a and #2b)
2. Place all of the enclosed ARCTIC FLAME GLASS into the burner. Not using all of the glass may result in a low flame.

Figure 1a



Figure 2b



OPERATION MANUAL

We recommend that before you install your **log set or glass you familiarize yourself with the control valve layout. This will help you to be confident operating the log set when fully installed (see figures below for typical control positions).*

FOR YOUR SAFETY, READ BEFORE LIGHTING

WARNING: IF YOU DO NOT FOLLOW THESE INSTRUCTIONS EXACTLY, A FIRE OR EXPLOSION MAY RESULT CAUSING PROPERTY DAMAGE, PERSONAL INJURY OR LOSS OF LIFE.

BEFORE LIGHTING, smell all around the Outdoor Firepit area for gas. Be sure to smell next to the floor because some gas is heavier than air and will settle on the floor. IF YOU SMELL GAS FOLLOW THE INSTRUCTIONS ON PAGE 1.

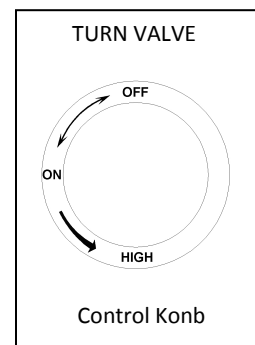
DO NOT use this appliance if any part has been under water. Immediately call a qualified, professional service technician to inspect the Outdoor Firepit and to replace any part of the control system and any gas control that has been under water.

Use only your hand to turn the gas key control. Never use tools to turn the key. If the key will not turn by hand, **DO NOT** try to repair it. Call a qualified, professional service technician. Force or attempted repair may result in fire or explosion.

LIGHTING INSTRUCTIONS

STOP – READ SAFETY INFORMATION ABOVE.

1. Turn the manual gas control slightly and turn clockwise to the “OFF” position or when you have a firm stop.
2. Wait 5 minutes for gas to clear out.
3. Place a burning match to the surface of the lava granules that cover the burner. Do not hold the match by hand.
4. After the match is burning and in position, turn the gas control key slightly, and slowly turn the key counter-clockwise to obtain the desire flame height.



Shutting Off the Firepit

Turn off; rotate the manual gas control key clockwise to the “OFF” position or when you have reached a firm stop

CAUTION: DO NOT turn the main gas valve key to the “ON” position **FOR 45 SECONDS** after closing.

OPERATING INSTRUCTIONS (continued)

OPERATING INFORMATION

- A. Young children **MUST** be carefully supervised when in the vicinity of this appliance.
- B. **DO NOT** sit or place any part of the body or combustible materials on the Firepit surround. Children and adults should be alerted to the hazard of high surface temperatures and should stay away to avoid burns or clothing ignition.
- C. Every time you use your Firepit make sure that the area around the Firepit is clear of flammable items such as gasoline, yard debris, wood, etc.
- D. **WARNING: HOT WHILE IN OPERATION AND FOLLOWING OPERATION.** Children must be carefully supervised when in the vicinity of this appliance. Serious injury and/or may occur. **DO NOT** throw trash, paper, or other flammable materials onto your Firepit. **DO NOT** leave unattended while in operation. **WARNING: DO NOT operate the Firepit in the rain.**
- E. **SOLID FUEL MUST NOT BE BURNED** in the enclosure where your Firepit is installed.
- F. **DO NOT** continue using if you smell unusual odors or have headaches, nausea or are dizzy.
- G. **DO NOT** store any combustible materials, gasoline, and any other flammable vapors/liquids around the area of your Firepit. Provide adequate clearance for servicing and operation.
- H. **DO NOT** hang clothing or any flammable material on or near your Firepit. Matches, paper, garbage, or any other material must not be thrown on top of the logs, burner, or into the flame.
- I. **DO NOT** use your Firepit if any part of it has been under water. Immediately call a qualified service technician to inspect the set and to replace any part of the control system and any gas control which has been under water.
- J. Installation and repair should be done by a qualified service person. The appliance should be inspected before use and at least annually by a qualified service person. More frequent cleaning may be required as necessary. It is imperative that control compartment, burners and circulating air passageways of the appliance be kept clean.
- K. **Once a year, make a visual check of the burner and burner flames** - see pictorial representation on following page for proper flame height. **To gain a proper line of site to check you burner, remove the side door to see the burner. If necessary, the use of a flash light may be helpful.**
- L. Cleaning of appliance – Remove logs and lava granules or ARCTIC FLAME GLASS, clean burner with soap and water and dry thoroughly. (To clean logs dust with feather duster or vacuum, never use water to clean logs.

WARNING

If upon Inspection of burner, any damage is evident, burner must be replaced prior to appliance being put into operation. Use only replacement parts specified by manufacturer.



Ideal Flame Appearance

LP Tank Information

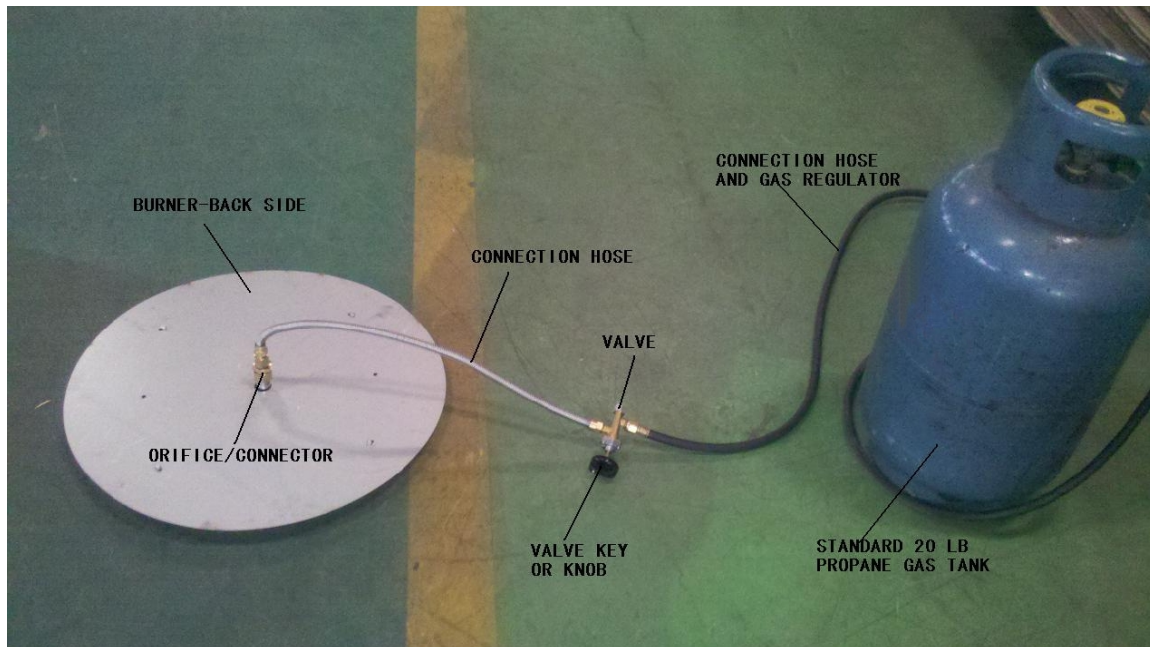
STOP – READ SAFETY INFORMATION BELOW

- 1. Other LP cylinders may be acceptable for use with your fire pit provided they are compatible with your fire pit retention means and accompanied by illustrations depicting the cylinder mounted to the appliance utilizing the cylinder retention means and the point of contact between the cylinder and the retention means.**
- 2. The LP gas supply cylinder to be used must be constructed and marked in accordance with the U.S. Department of Transportation (D.O.T.) Specifications for LP Gas Cylinders, Spheres and Tubes for Transportation of Dangerous Goods and Commission, CAN/CSA B339 as applicable.**
- 3. The LP cylinder must be provided with a listed overfilling prevention device.**
- 4. The LP cylinder must be provided with a cylinder connection device compatible with the connection of your fire pit.**

CONVERTING YOUR FIREPIT TO A DIFFERENT GAS TYPE

To convert your Firepit from propane to natural gas or natural gas to propane gas, carefully follow the steps below:

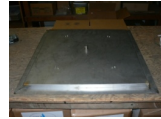
1. **MAKE SURE THAT THE GAS SUPPLY TO THE FIREPIT (AND ANY NEARBY ELECTRICAL SOURCES/APPLIANCES) ARE SHUT OFF AND UNPLUGGED.**
2. Remove all logs and lava rock or glass burner media from the Firepit enclosure and remove the decorative top.
3. Remove the burner pan from your fire ring or enclosure.
4. Carefully detach the connector hose attached to the orifice holder and unscrew the orifice holder from the burner pipe.
5. Remove the orifice from the holder and replace it with the proper sized one for your gas requirement. Propane requires the smaller orifice.
6. If you are converting from natural gas (NG), to propane (LP) gas, slide the air shutter so that the air intake hole is open. For natural gas, slide the air shutter so that the air intake hole is closed.
7. For natural gas (NG), you must install a gas pressure regulator. Adjust gas pressure regulator to 7 inches water column.



Gas Parts Drive Train

California Outdoor Concepts * Parts List

- **Burner Pan** **Part # 804**



- **Orifice with Air Mixer** **Part # 803**



- **Connector Hose** **Part # 812**



- **Valve** **Part # 805**



- **Nipple** **Part # 809**



- **Brass Jam Nut** **Part # 811**

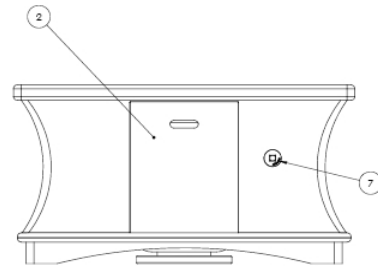
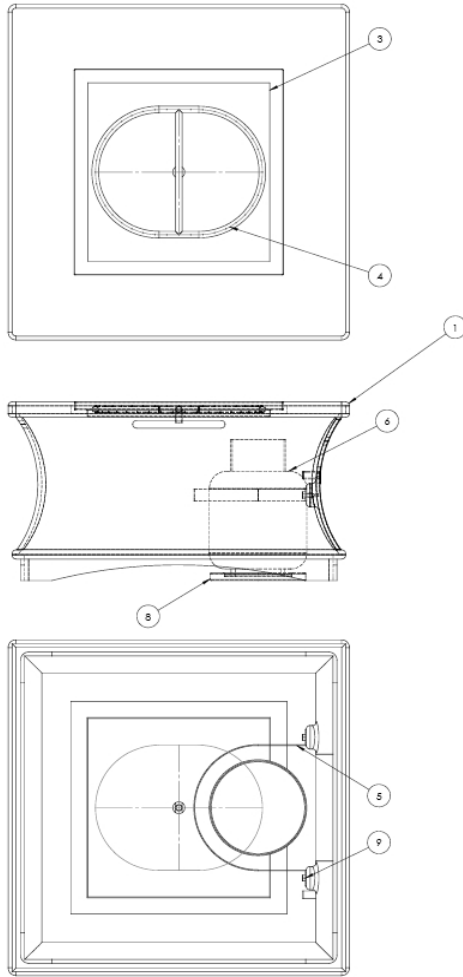


- **Gas Knob** **Part # 807**



- **Hose and Regulator Assembly** **Part # 812**





ITEM NO.	PART NUMBER	DESCRIPTION	QTY.
1	COC-PP-101C	BASE UNIT SINGLE PIERCE CASTING	
2	COC-PP-102C	TANK ACCESS DOOR	
3	COC-PP-104C	MONTEREY BURNER PAN	
4	TRG-BRI-100021	SQUARED INFINITY BURNER, OPT J	
5	COC-PP-103C	TANK CONTAINMENT BAND	
6	Propane_Tank	20 PROPANE TANK, PROVIDED BY RID VENDOR	
7	Valve Range	CHROMED VALVE RANGE	
8	HDC-PP-0006C	PROPANE TANK BAKE DISK	
9	HLSCRM 9.5000x1.25	1/2x1.25 HEX HEAD LAG SCREW	

PROFESSIONAL AND CONFIDENTIAL
THE INFORMATION CONTAINED IN THIS DRAWING IS THE SOLE PROPERTY OF CH2M HILL COMPANY HANSE HEREIN. ANY REPRODUCTION IN PART OR AS A WHOLE WITHOUT THE WRITTEN PERMISSION OF CH2M HILL COMPANY HANSE HEREIN IS PROHIBITED.

		<p>UNLESS OTHERWISE SPECIFIED:</p> <p>DIMENSIONS ARE IN INCHES</p> <p>TOLERANCES:</p> <p>FRACTIONAL $\pm .015$</p> <p>ANGULAR $\pm .30^\circ$</p> <p>TWO PLACE DECIMAL $\pm .015$</p> <p>THREE PLACE DECIMAL $\pm .005$</p> <p>NEAREST GEOMETRIC</p> <p>TOLERANCES PER:</p> <p>ANSI Y14.5</p>
NOT A201	USED ON	FORM
APPLICATOR		DO NOT SCALE DRAWING

NAME	DATE
DEANN	DAG 21DEC10
CHECKED	
ENG APPR.	
MFG APPR.	
G.A.	
COMMENTS:	

TITLE: MONTEREY CHAT FIRE TABLE ASSEMBLY		
SIZE C	DWG. NO. COC-FP-00100	REV
SCALE: 1:8 WBGHT:		SHEET 1 OF 1



1010 Salono Chat



1020 Salono Dining



1030 Salono Bar



2010 Del Mar Chat



2020 Del Mar Dining



2030 Del Mar Bar



2050 Del Mar Balcony



4010 La Costa Chat



4020 La Costa Dining



4040 La Costa Del Rio



5010 Carmel Chat



7010 San Simeon Chat



7110 Monterey



7140 Monterey Coffee Table



7210 Island



7310 Palm Chat



7320 Palm Dining



7330 Palm Bar



7410 Tradewinds Chat



7420 Tradewinds Dining



7430 Tradewinds Bar



7520 La Jolla



7550 La Paz



7610 El Paseo



7611 Rodeo Chat



7651 Rodeo Balcony



Use your smart
phone QR code
reader to view



Follow us on Facebook
and Twitter

17671 Irvine Blvd.
Suite 108
Tustin, CA 92780
Toll Free (877)-274-6773
Fax (877)-274-0017
www.californiaoutdoorconcepts.com



Codes and Gas Requirements:

When an appliance is for connection to a fixed piping system, the installation must conform to local codes, or in the absence of local codes with the *National Fuel Gas Code, ANSI Z223.1/NFPA 54; International Fuel Gas Code, Natural Gas and Propane Gas Installation Code, CSA B149.1; or Propane Storage and Handling Code, B149.2*, as applicable.

For appliances with a fixed fuel piping system and equipped with an appliance gas pressure regulator, the appliance and its individual shut off valve must be disconnected from gas supply piping system during any pressure testing of that system at pressures in excess of ½ psi (3.5 kPa).

The appliance must be isolated from gas supply piping system by closing its individual manual shut off valve during any pressure testing of the gas line at test pressures equal to, or less than ½ psi (3.5 kPa).

	LP Gas	NG Gas
Normal Gas Pressure	11" WC	7" WC
Burner Orifice Size	#39	#13
BTU/ hr	64,000	64,000

DATE _____

MANUFACTURER'S USE ONLY

A. Quality Check: _____

B. Orifice # (MAIN): _____

C. Orifice # (OTHER): _____

D. Leak Test: _____

E. Burn Test: _____

F. Gas Type: _____

G. Model #: _____

H. Serial #: _____

I. Air Shutter: _____

J. Inspector: _____