



INSTRUCTIONS - ROUND GRILL ASSEMBLY

IMPORTANT: TWO ADULTS NEEDED TO ASSEMBLE ROUND GRILL

TOOLS REQUIRED:

- | | |
|--|---|
| <ul style="list-style-type: none">• Box Cutter• Adjustable Wrench, or 11mm Wrench | <ul style="list-style-type: none">• Large Phillips Screw Driver |
|--|---|

IMPORTANT: Do Not Lift Grill By The Hinge When Inserting Into Cradle.

TO ASSEMBLE:

1. When the Primo Round Grill arrives, select a level area with plenty of working space such as a driveway or parking lot.
2. Open the top of the box, remove the two main cradle parts and set them aside. Some models are boxed, along with the side shelves. **NOTE:** One has a notched top bar. **See Figure 1.**



Figure 1



Figure 2

3. Use a box cutter and cut vertically down one of the corners. Firmly pull away the four cardboard sides and discard. **See Figure 3.**



Figure 3

4. Open the grill and remove the ash tool, grate lifter, owners manual and the cradle hardware package. **See Figure 4.**



Figure 4

PRIMO ROUND GRILL ASSEMBLY

5. Insert the cradle part with the notched top bar horizontally then turn upright to form an "X" shape and align holes. **See Figure 5.**



Figure 5

8. Align the metal cross-member bar with the holes and use the remaining threaded studs and nuts. **TIGHTEN ALL FASTENERS FROM PRIOR STEPS. See Figure 8.**



Figure 8

6. Insert threaded stud through the two bottom bars. Use a locking washer, then nut. **FINGER TIGHTEN ONLY AT THIS TIME. See Figure 6.**



Figure 6

9. Align the cradle with the grill. Make sure the locking casters are locked and the furthest from the grill. **See Figure 9.**

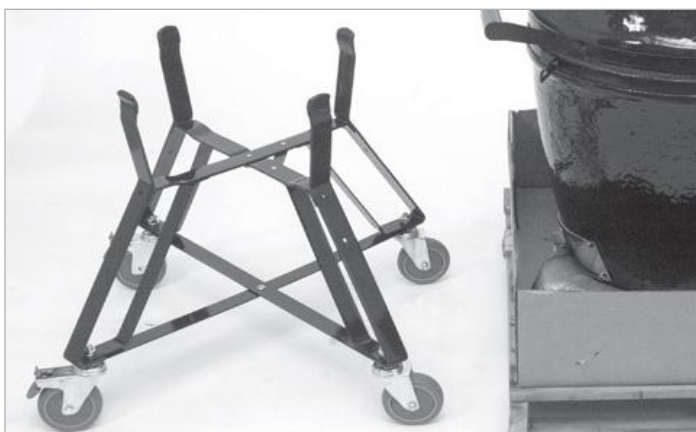


Figure 9

7. Insert a threaded stud into the two top bars. Use a locking washer and one of the nuts **FINGER TIGHTEN ONLY AT THIS TIME. See Figure 7.**



Figure 7

10. Remove the internal components of the grill while one person holds the grill in place to prevent it from tipping over. **See Figure 10.**



Figure 10

PRIMO ROUND GRILL ASSEMBLY

11. Two adults are required on each side of grill. Lift grill by placing one hand under the bottom of the grill and one on the base just below the hinge. DO NOT LIFT BY HINGE. **See Figure 11.**



Figure 11

12. Make sure the draft door is centered and the locking casters are in front. You may need to push down on the grill to seat it properly. **See Figure 12.**



Figure 12

13. Insert the fire box into the grill. Make sure the opening in the fire box is aligned with the draft door opening. **See Figure 13.**

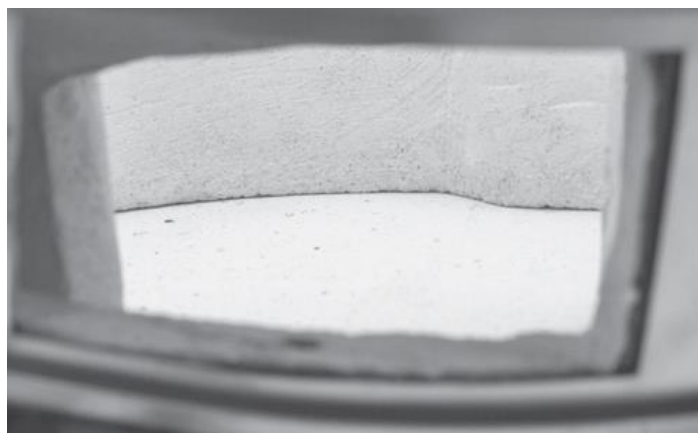


Figure 13

14. Insert the charcoal grate in the bottom of the fire box, then add the cooking grate as shown in the photo. Cooking grate rests on firebox. **See Figure 14.**



Figure 14

PRIMO ROUND GRILL ASSEMBLY

15. Attach the two brackets to the side shelves with 4 screws per shelf in the outermost holes as shown. Ensure pins on bracket face outwards. Repeat for opposite shelf assembly. **See Figure 15.**



Figure 15

16. Attach the side shelves into the open slots of the cart brackets as shown in **Figure 16a**. Side shelves may be folded downward as shown in **Figure 16a**, or removed when not in use. Swing side shelf upwards and engage side shelf brackets into pins of cart to lock into open position as shown in **Figure 16b**.



Figure 16a



Figure 16b

PRIMO ROUND GRILL ASSEMBLY



Primo - Completed Round Grill Assembly

FINAL NOTES AFTER ASSEMBLY:

- Always pull the grill carefully when moving. Never push grill to prevent the potential of it tipping it over.
- When the grill is in the desired location, push down the tabs on the locking casters to set the locks.

SERVICE TECHNICIAN NOTES

Date	Dealer Name	Service Technician Name	Service Performed/Notes

This page intentionally left blank.



918 Freeburg Avenue
Belleville, IL 62220
618.233.7420
www.primogrill.com