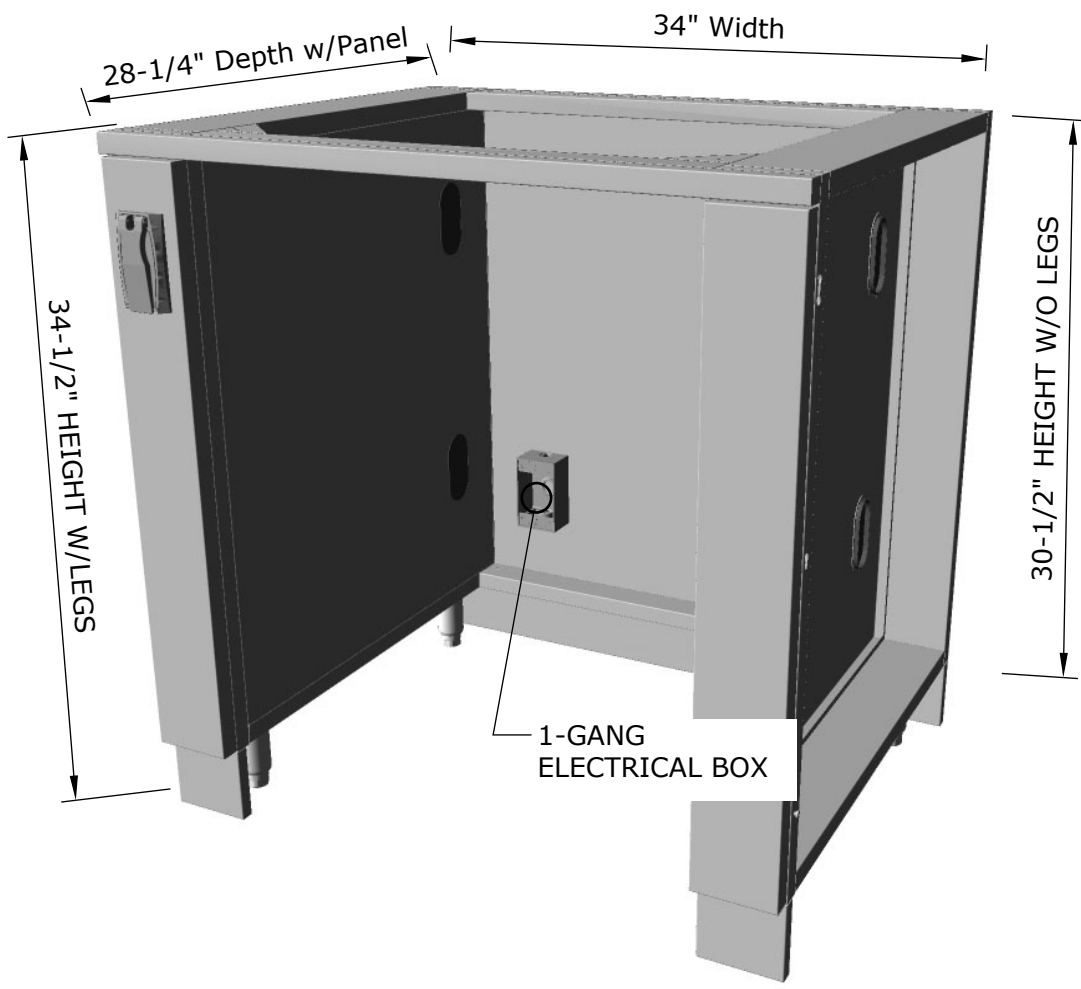
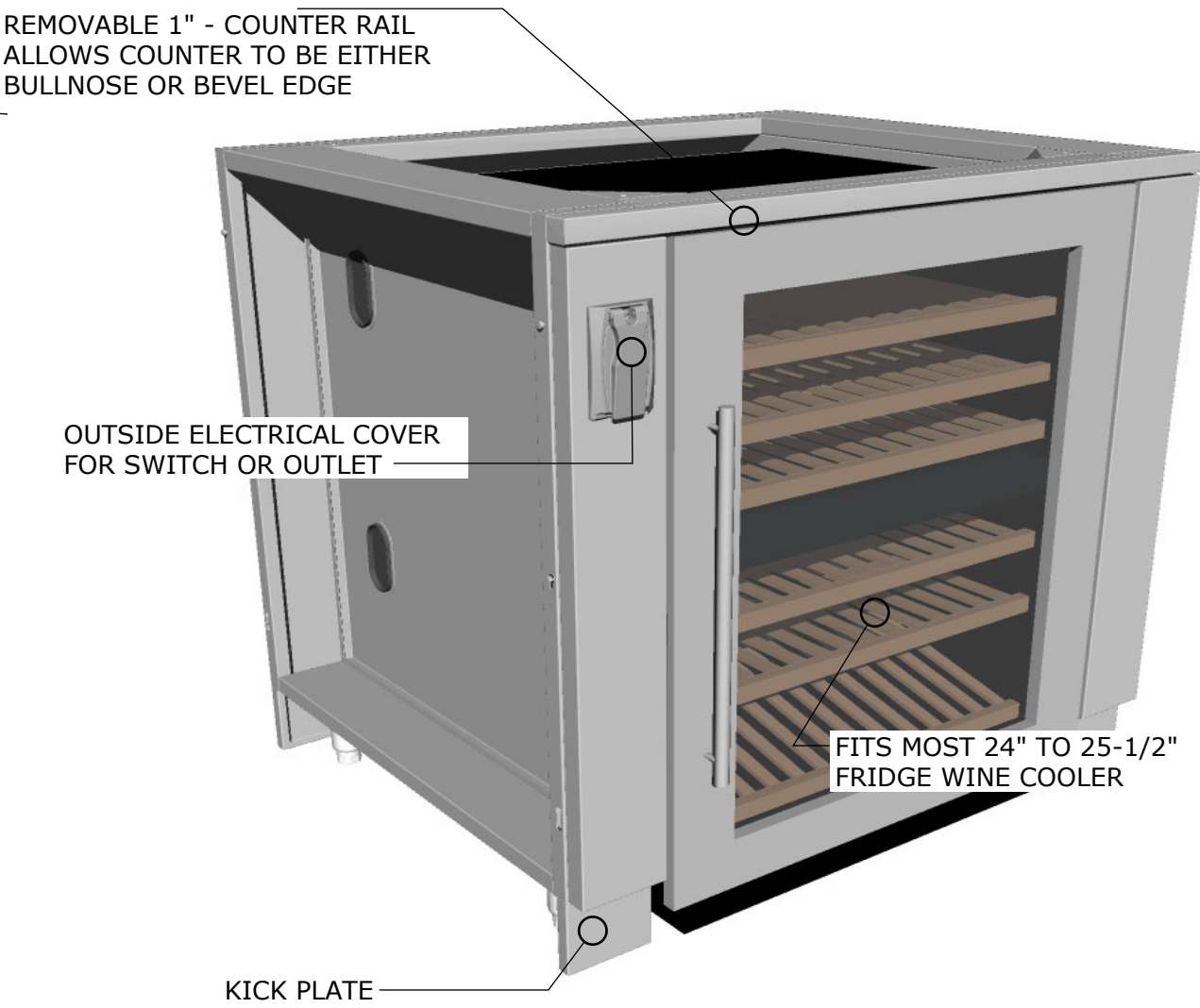


Product Dimensions

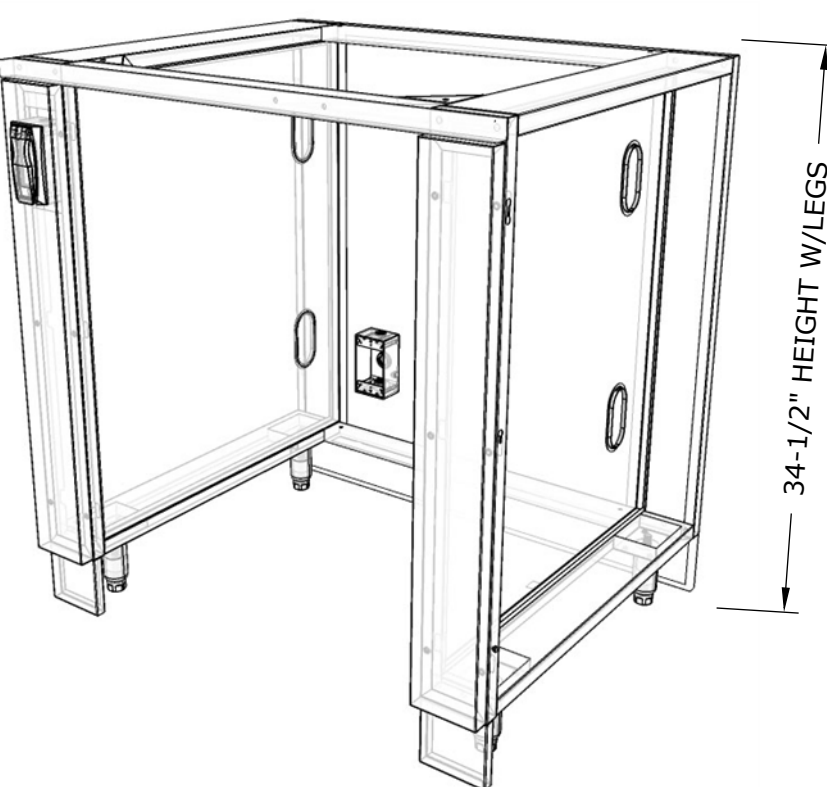


Product Components

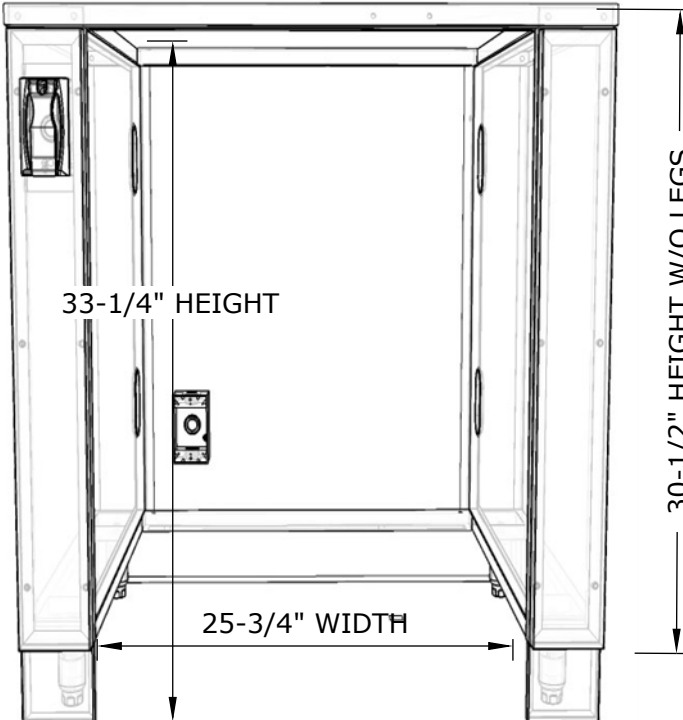


Product Diagrams

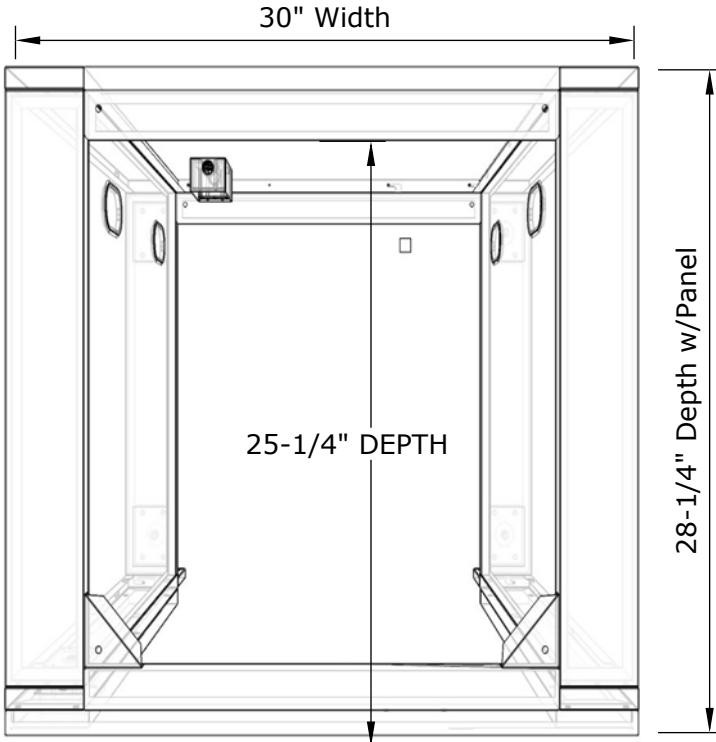
ISO VIEW



FRONT VIEW



TOP VIEW



**SUNSTONE METAL PRODUCTS**  
16004 CENTRAL COMMERCE DR.  
PFLUGERVILLE, TEXAS 78660  
Tel: 888.934.9449  
Bus: 512.487.5116  
Fax: 512.487.7016

**PRODUCT**  
34" Appliance For up to 25"  
Wide Fridge

**Item No. SAC34APC**

**DESCRIPTION**  
34" Appliance Cabinet for up to 25" Fridges  
& Ice Makers w/Convenient front Electrical  
Cover & Interior Back Panel 1-Gang  
Electrical Box

- Lifetime Structure Warranty
- 304 Stainless Steel Structure
- 304 SS Rod Handles
- Front & Back Kick-Plates
- Easy Pin-Lock Installation
- Soft-Close Drawer Tracks
- Covered Access Ports
- Adjustable Peg-Legs
- Optional Wheel Casters

- INCLUDED COMPONENTS**
- Front Kick Plates
  - Back Solid Kick Plate
  - (4) Adjustable Peg Legs
  - Front Electrical Cover
  - Back Panel Electrical Box

**PRODUCT DIMENSIONS**

34"W x 28-1/4"D (w/Panel) x 34-1/2"H (w/Legs) or 30-1/2"H (no Legs) or Upto 36" Max Adjustable Height

**INSERT DIMENSIONS**

25" Width x 33-1/4" Height x 25-1/4" Depth

**INSERTABLE PRODUCTS**

Works with up to 25" Wide Fridges, Wine Coolers & Ice Makers

**MATERIAL SPECS**

304 Stainless Steel entire structure, 18 Gauge for Door Panel , 18 Gauge for Cabinet Box, 18 Gauge for Shelf, Handles are made of Solid 304 Stainless Steel Bar.