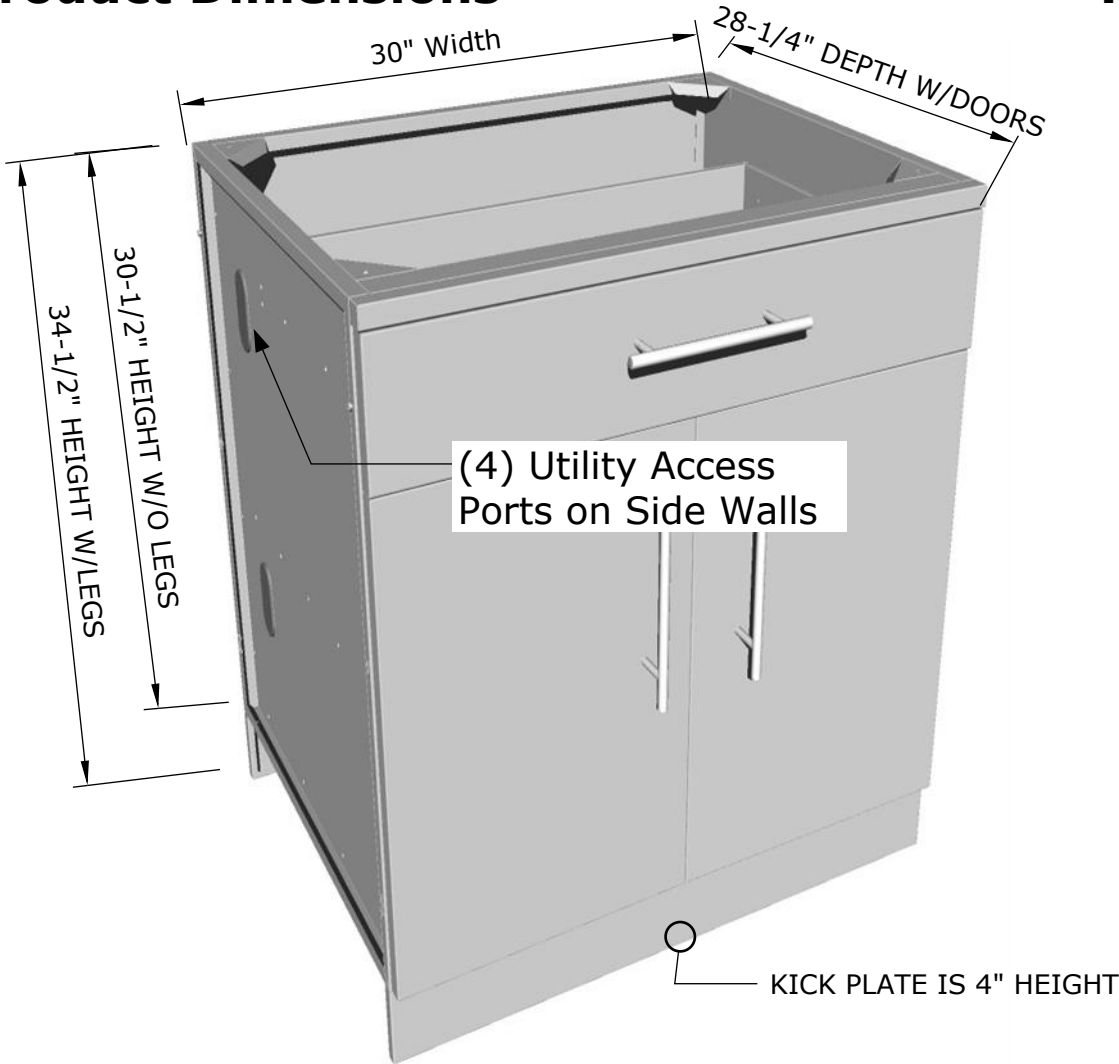
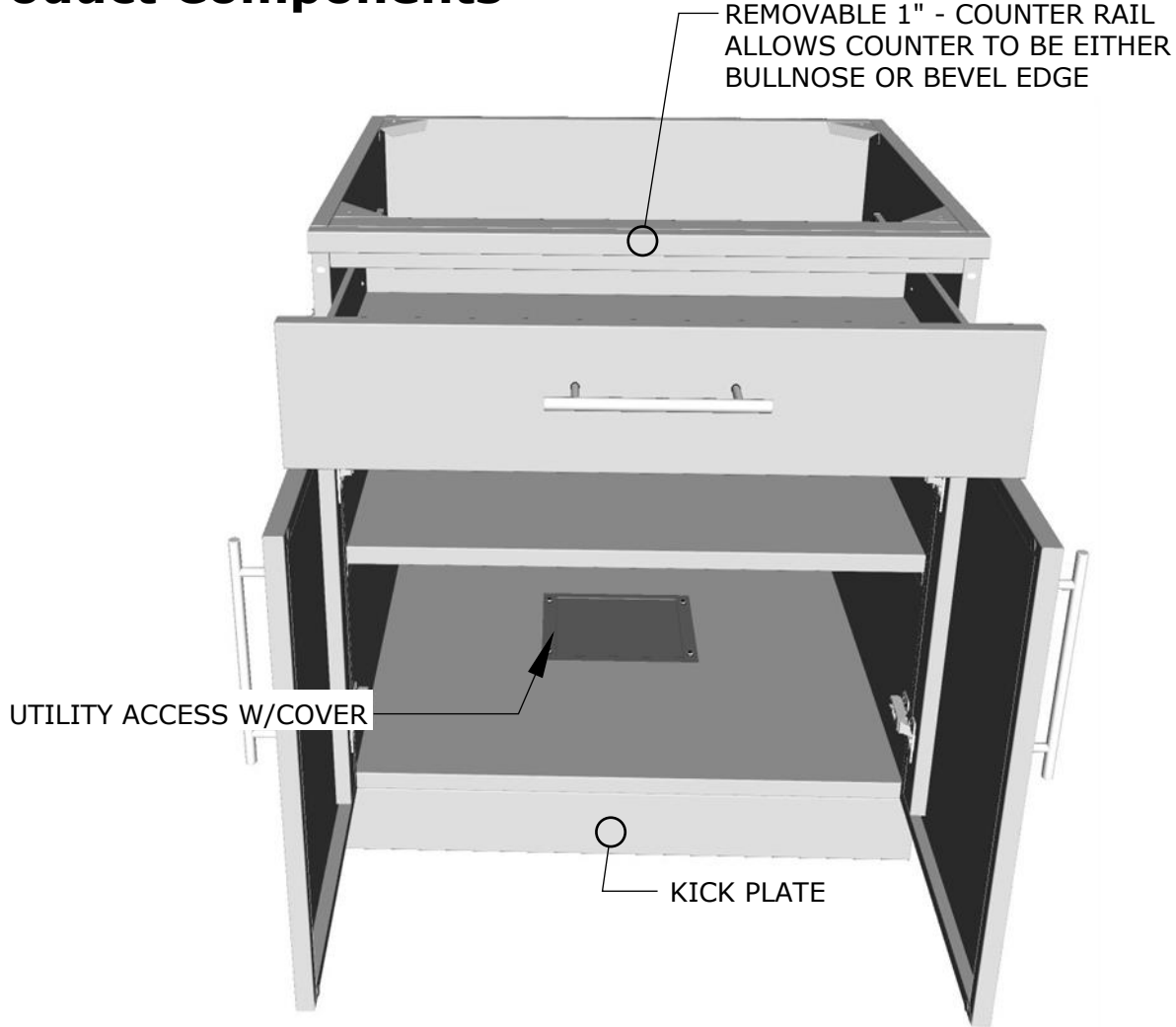


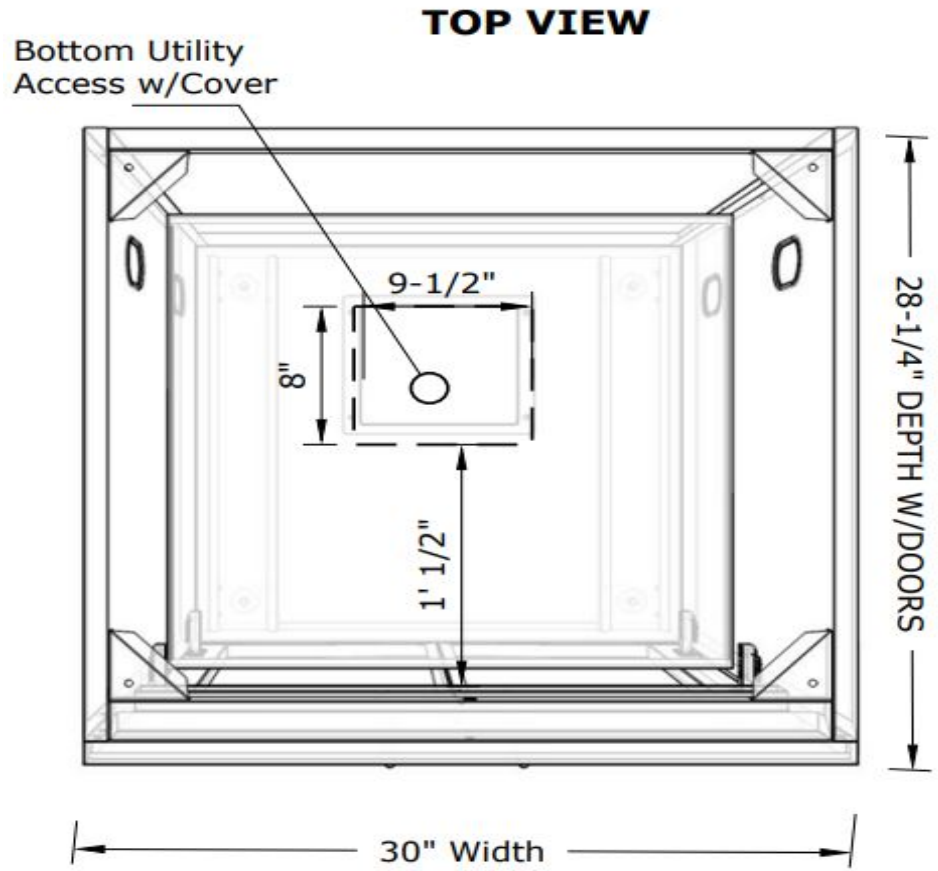
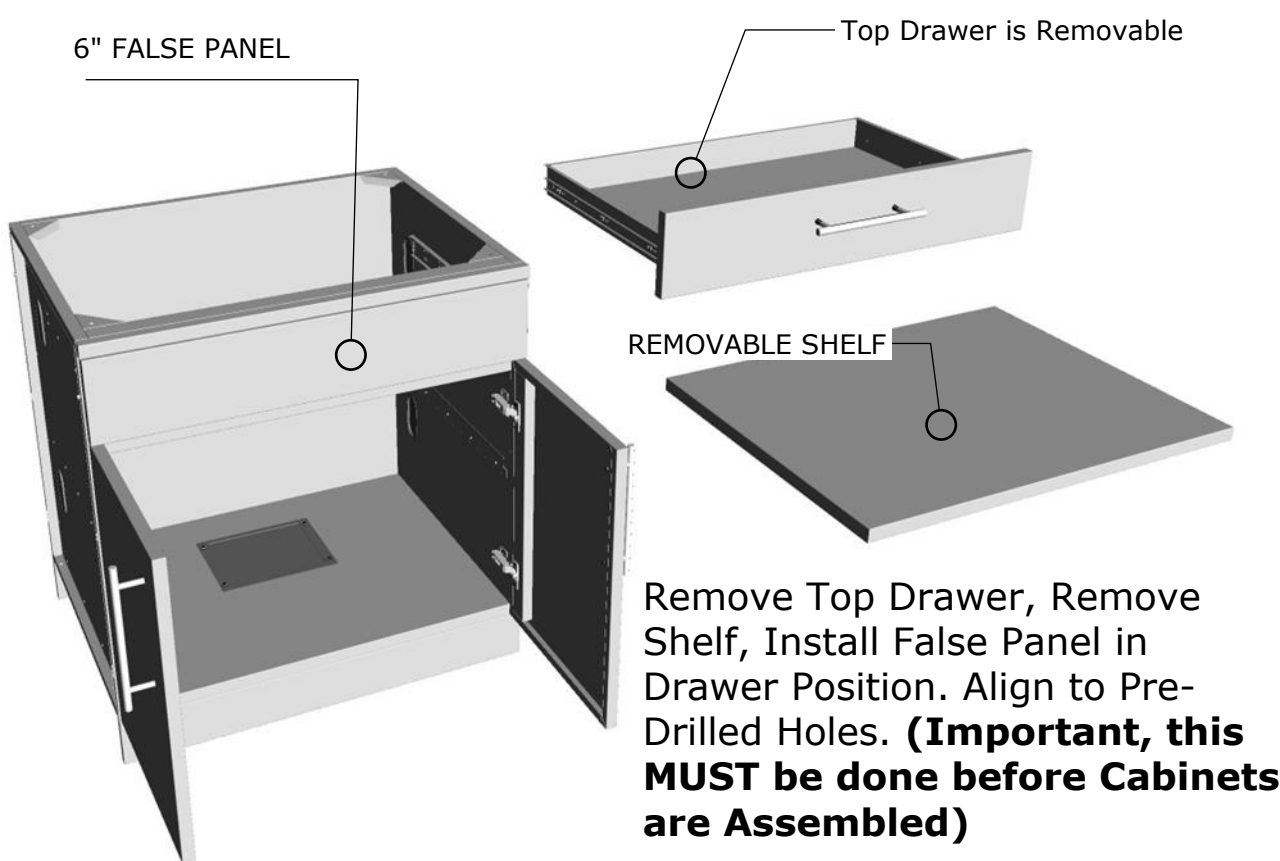
Product Dimensions



Product Components



Cabinet Conversion for Drop-In Appliance



SUNSTONE METAL PRODUCTS
16004 CENTRAL COMMERCE DR.
PFLUGERVILLE, TEXAS 78660
Tel: 888.934.9449
Bus: 512.487.5116
Fax: 512.487.7016

PRODUCT
30" Double Door Cabinet
w/Shelf, Drawer & False
Panel Option
Item No. SBC30CDD

DESCRIPTION
30" Double Door Cabinet with
Shelf and False Top Panel.
Remove Shelf for Sink Installation.

- Lifetime Structure Warranty
- 304 Stainless Steel Structure
- 304 SS Rod Handles
- Front & Back Kick-Plates
- Easy Pin-Lock Installation
- Soft-Close Drawer Tracks
- Covered Access Ports
- Adjustable Peg-Legs
- Optional Wheel Casters

INCLUDED COMPONENTS

- Front Kick Plates
- Back Solid Kick Plate
- (4) Adjustable Peg Legs
- Center Shelf

PRODUCT DIMENSIONS

30"W x 28-1/4"D
(w/Doors) x 34-1/2"H
(w/Legs) or 30-1/2"H (no
Legs) or Upto 36" Max
Adjustable Height

INSERT DIMENSIONS

28"Width x 18"Depth

INSERTABLE PRODUCTS

Single Side Burner - 1SSB
Premium Sink - B-PS21
Standard Sink - A-SS17
Drop-In Ice Chest - A-IC

MATERIAL SPECS

304 Stainless Steel entire
structure, 18 Gauge for Door
Panel , 18 Gauge for Cabinet
Box, 18 Gauge for Shelf,
Handles are made of Solid 304
Stainless Steel Bar.