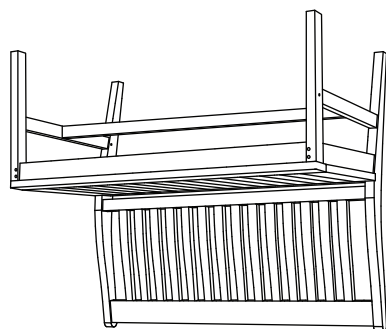


WEXFORD BENCHES



OXFORD GARDEN

### About Shorea Wood & Lite-Core Table Tops

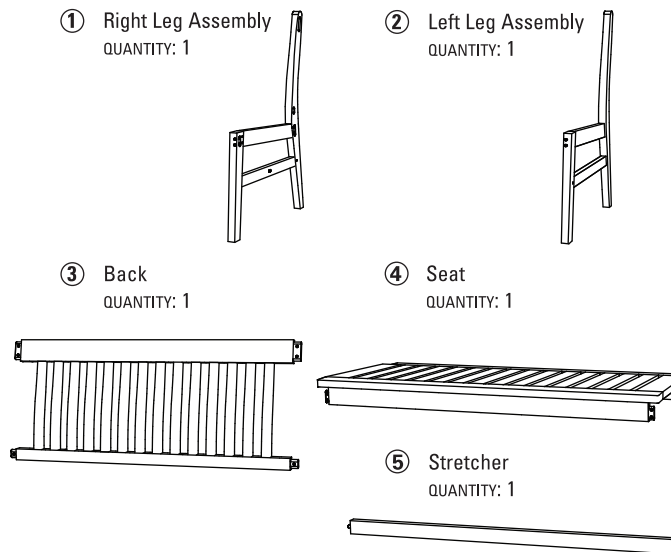
**Shorea** is a tropical hardwood that is comparable to teak. Because of its high oil content it is resistant to rotting, bug infestation, and the effects of wind, rain, sun, and snow. If left untreated shorea weathers naturally to a beautiful silver gray color. Some surface roughness may develop, especially at the end grain, but over a period of about one year, the natural weathering process will stabilize. Moderate checking in the grain is normal with exposure to the elements. Small surface cracks that may appear in no way affect the structural integrity of the furniture. As weather conditions and temperatures fluctuate these small cracks may expand and contract.

**Lite-Core** is an engineered panel that combines the durability of natural granite stone and the light weight of aluminum. One of the hardest stones available, granite is a highly scratch and stain resistant solid surface that is backed with an aluminum honeycomb panel. This combination results in tabletop with a beautiful surface that is durable and light weight.

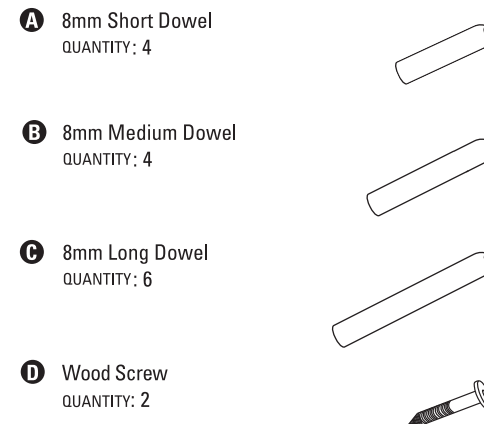
### Warranty

Oxford Garden warrants all outdoor furniture and accessories to be free from manufacturing defects in materials and workmanship. Provided the furniture is assembled correctly and is subjected to normal use, Oxford Garden will cover your outdoor furniture under the following five, three and one year warranties. For more details regarding the Oxford Garden warranty, visit [www.oxfordgarden.com/warranty](http://www.oxfordgarden.com/warranty).

## Components



## Hardware



## Finishing Items (included)

Medium Grit Sandpaper

NOTE: A hammer and phillips head screw driver (not provided) will be needed for the assembly of this bench.

NOTE: If the furniture is going to be placed on a concrete or tile patio, it should first be rinsed well to remove the sawdust that may cause some staining.

### Care Instruction

**Shorea Wood:** To prevent the staining of concrete or tile the furniture should be rinsed well after assembly to remove dust that might remain from the manufacturing process. Although Shorea weathers well, we recommend a routine application of teak shield, teak oil or Cabot's Australian Timber Oil in extremely dry climates. Routine application of these products is also recommended for furniture to be used for dining purposes to discourage staining from food and drink spills.

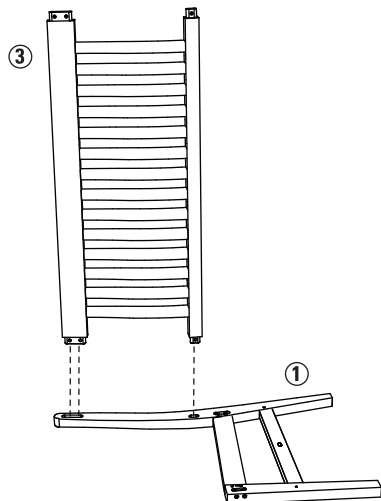
For seasonal cleaning rinse the furniture well and then scrub (using a sponge or soft bristle brush) with a mild solution of water, laundry detergent and a little bleach. Rinse with fresh water.

To restore the original wood color to **Natural Shorea**, Cabot's Australian Timber Oil or any high quality teak oil can be applied after cleaning. For **Grigio Shorea**, the finish will disappear over time as the wood naturally grays beneath the stain. We recommend allowing this process to take place over time, but Grigio Instant Gray can be reapplied as desired to maintain the original finish. When applying any color product to wood, test in an inconspicuous spot first. Application of oil or Grigio is at the customer's discretion and is not covered by the warranty. Paint or any products with polyurethane are not recommended, as application of these products will void the warranty as well.

**Lite-Core:** Tabletops are maintained by using a soft rag and mild soap or pH balanced cleaner, rinse thoroughly, and dry with a clean rag. Avoid bleach and cleaners that are acidic, alkaline, or abrasive. To protect against stains, clean spills immediately and re-seal with a penetrating stone sealer twice a year. Scrape away gum or sticky material with a plastic putty knife.

### Step 1

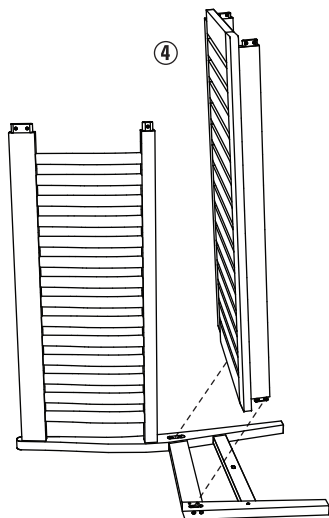
On a clean flat surface, lay right leg assembly ① on its side, mortise holes facing up. Place the tenons of the back assembly ③ into the mortises of the right leg assembly.



### Step 2

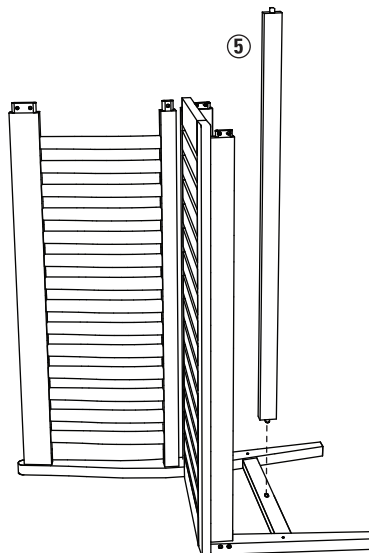
With the front of the seat ④ toward the front of the chair, line up and insert the two tenons of the seat into the right leg assembly.

NOTE: Front of seat is wider than back of seat.



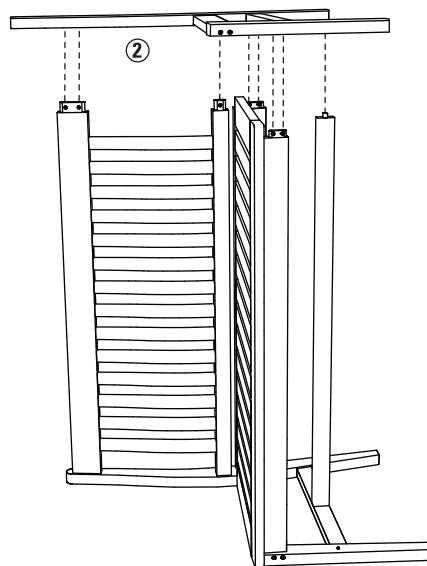
### Step 3

Line up and insert stretcher ⑤ to right leg assembly as shown.



### Step 4

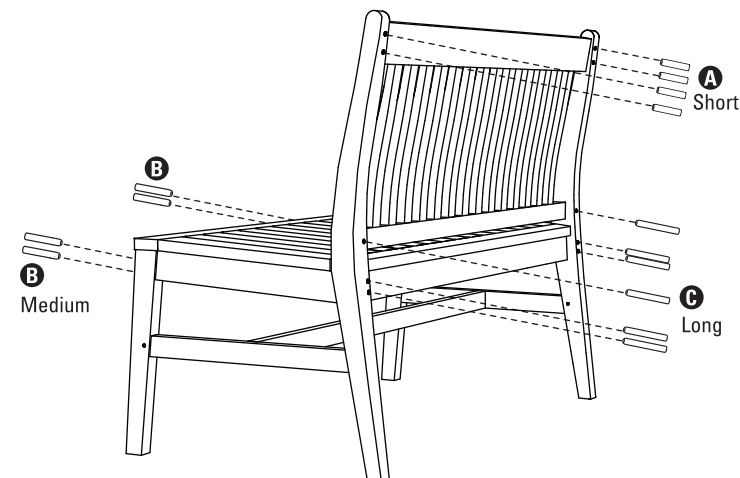
Line up and place left leg assembly ② onto assembled parts



### Step 5

With a hammer, drive the short ①, medium ② and long ③ dowels into designated pre drilled holes as shown.

NOTE: Insert the tapered end of the dowels first.



### Step 6

Using a phillips head screwdriver, screw two wood screws ④ to secure stretcher as shown.

