



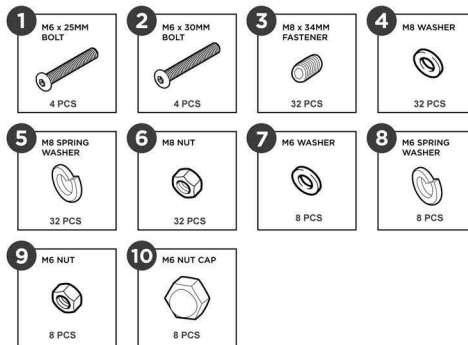
Thank you for choosing Sunnydaze Decor. If you have any questions, comments or concerns, feel free to contact us by phone at **888-881-4668**, by email: customerservice@serenityhealth.com, or via our contact us page at www.SerenityHealth.com/contact-us.

We stand behind our brand and the quality of the items we sell. We will send new parts or replace products at our discretion within the 1-year warranty period. Before we can help, you will need to provide proof of purchase with the date of purchase, and photos of the defective merchandise. We will use the photos to determine the cause of defect and for future quality control.

TOOLS REQUIRED



HARDWARE



PARTS

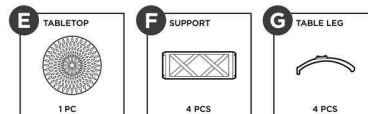
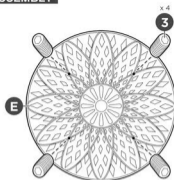


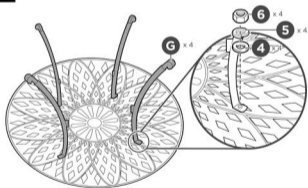
TABLE ASSEMBLY

1



Screw four part 3 fasteners into the part E tabletop.

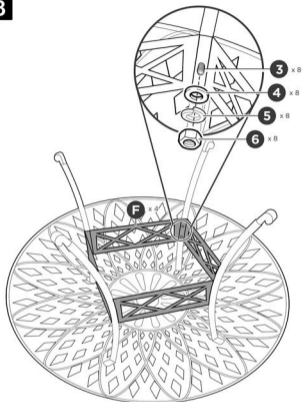
2



Attach four part G table legs to the fasteners with four part 4 washers, four part 5 spring washers, and four part 6 nuts.

TABLE ASSEMBLY

3



Attach four part F supports to the table legs with eight part 3 fastener, eight part 4 washers, eight part 5 spring washers, and eight part 6 nuts.