

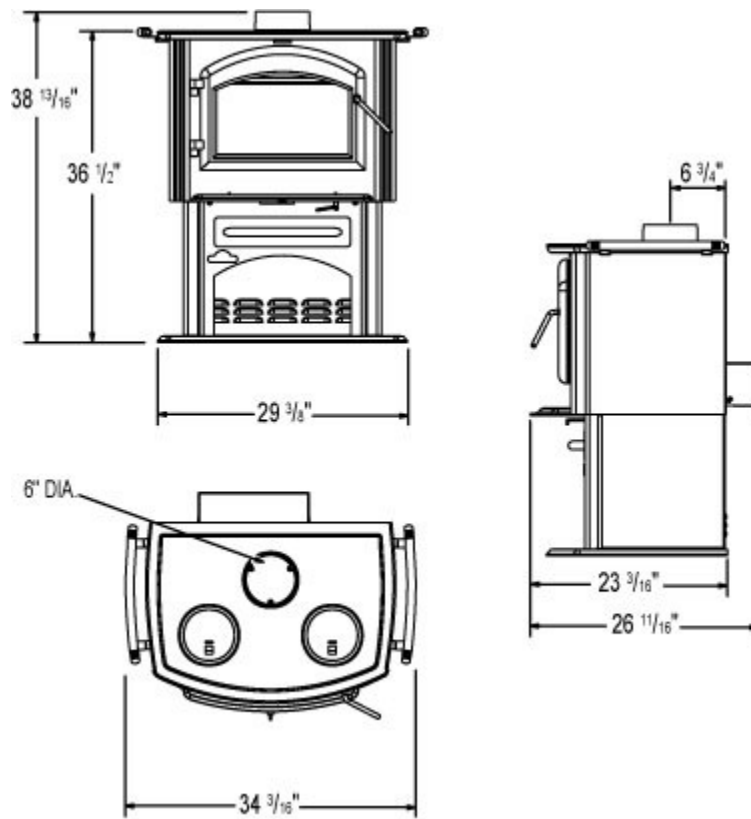
## 1150P Wood Gourmet™ Cook Stove

Specifications	Model 1150P
<b>Width x Height x Depth (inches not including pot fenders)</b>	<b>29 3/8" x 36 1/2" x 23 3/16"</b>
<b>Firebox Chamber (W.H.D.) (inches)</b>	<b>18" x 12"x 13 1/2"</b>
<b>Firebox Capacity</b>	<b>1.7 cu. ft.</b>
<b>Weight with out bricks</b>	<b>280 lb.</b>
<b>Weight of bricks</b>	<b>110 lb.</b>
<b>Approximate Area Heated* sq. ft.</b>	<b>600 - 1,500</b>
<b>Heat Output BTU/h (high burn)***</b>	<b>55,000 BTU</b>
<b>Burn Time (low fire)*</b>	<b>7 hours</b>
<b>Catalytic combustor</b>	<b>no</b>
<b>Mobile home approved</b>	<b>no</b>
<b>R-2000 approved (Canada)</b>	<b>yes</b>
<b>Max. log size</b>	<b>18"</b>
<b>Outside combustion air</b>	<b>yes</b>
<b>Flue center line to rear</b>	<b>6 3/4"</b>
<b>Flue center line to side</b>	<b>14 11/16"</b>

\*Figures may vary with individual conditions. Please consult your specialty dealer

\*\*EPA (Environmental Protection Agency) rated BTU/HR with softwood test fuel (for emissions testing only) - no refueling

\*\*\*Wolf Steel Ltd. own test results showing realistic BTU using hardwood logs with regular refueling. Heat output will differ depending on chimney draft as well as type, moisture content and size of wood.



NAPOLEON STOVES ARE CERTIFIED FOR EMISSIONS TO EPA PHASE 2 1990 STANDARDS  
AND SAFETY TESTED TO NORTH AMERICAN STANDARDS

**The measurements are to be used as a guide only. Please consult your installation manual for updated and precise measurements before proceeding to install your Napoleon stove.**  
Check all Local and National Building Codes and Gas Regulations